



EDB

EDB JDBC Connector

Release 42.2.12.3

EDB JDBC Connector User's Guide

Oct 27, 2020

Contents

1	What's New	2
2	Requirements Overview	3
2.1	Supported Versions	3
2.2	Supported Platforms	3
3	Advanced Server JDBC Connector Overview	5
3.1	JDBC Driver Types	5
3.2	The JDBC Interface	7
3.3	JDBC Classes and Interfaces	8
3.4	The JDBC DriverManager	9
3.5	Advanced Server JDBC Connector Compatibility	10
4	Installing and Configuring the JDBC Connector	11
4.1	Installing the Connector with an RPM Package	12
4.1.1	On RHEL 7	12
4.1.2	On RHEL 8	14
4.1.3	On CentOS 7	16
4.1.4	On CentOS 8	18
4.1.5	Updating an RPM Installation	20
4.2	Installing the Connector on an SLES 12 Host	21
4.3	Installing the Connector on a Debian or Ubuntu Host	22
4.4	Using the Graphical Installer to Install the Connector	24
4.5	Configuring the Advanced Server JDBC Connector	30
5	Using the Advanced Server JDBC Connector with Java applications	31
5.1	Loading the Advanced Server JDBC Connector	33
5.2	Connecting to the Database	34
5.2.1	Additional Connection Properties	35
5.2.2	Preferring Synchronous Secondary Database Servers	37

	Configuring Primary and Secondary Database Servers Overview	38
	Example: Primary and Secondary Database Servers	38
5.3	Executing SQL Statements through Statement Objects	45
	5.3.1 Using Named Notation with a CallableStatement Object	46
5.4	Retrieving Results from a ResultSet Object	48
5.5	Freeing Resources	49
5.6	Handling Errors	50
6	Executing SQL Commands with executeUpdate()	51
6.1	Using executeUpdate() to INSERT Data	52
	6.1.1 executeUpdate() Syntax Examples	54
7	Adding a Graphical Interface to a Java Program	55
8	Advanced JDBC Connector Functionality	59
8.1	Reducing Client-side Resource Requirements	60
	8.1.1 Modifying the Batch Size of a Statement Object	61
8.2	Using PreparedStatements to Send SQL Commands	62
8.3	Executing Stored Procedures	64
	8.3.1 Invoking Stored Procedures	65
	Executing a Simple Stored Procedure	66
	Executing Stored Procedures with IN parameters	68
	Executing Stored Procedures with OUT parameters	70
	Executing Stored Procedures with IN OUT parameters	72
8.4	Using REF CURSORS with Java	75
	8.4.1 Using a REF CURSOR to retrieve a ResultSet	75
8.5	Using BYTEA Data with Java	78
	8.5.1 Inserting BYTEA Data into an Advanced Server Database	79
	8.5.2 Retrieving BYTEA Data from an Advanced Server Database	81
8.6	Using Object Types and Collections with Java	83
	8.6.1 Using an Object Type	84
	8.6.2 Using a Collection	87
8.7	Asynchronous Notification Handling with NoticeListener	90
9	Security and Encryption	93
9.1	Using SSL	93
	9.1.1 Configuring the Server	94
	9.1.2 Configuring the Client	95
	sslmode Connection Parameters	95
	9.1.3 Testing the SSL JDBC Connection	97
	Using SSL without Certificate Validation	98
	9.1.4 Using Certificate Authentication Without a Password	99
9.2	Scram Compatibility	100
10	Advanced Server JDBC Connector Logging	101

10.1	Enabling Logging with Connection Properties (static)	102
10.2	Enabling Logging with logging.properties (dynamic)	103
11	Reference - JDBC Data Types	104
12	Conclusion	106
	Index	108

The EDB JDBC connector provides connectivity between a Java application and an Advanced Server database. This guide provides installation instructions, usage instructions, and examples that demonstrate the Advanced Server specific functionality of the JDBC Connector.

The EDB JDBC connector is written in Java and conforms to Sun's JDK architecture. For more information, see *JDBC Driver Types*

The EDB JDBC connector is built on and supports all of the functionality of the PostgreSQL community driver. For more information about the features and functionality of the driver, please refer to the community [documentation](#).

CHAPTER 1

What's New

The following features are added to create EDB JDBC Connector 42.2.12.3:

- Support for EDB Postgres Advanced Server 13.
- Support for Ubuntu 20.04 LTS platform.

2.1 Supported Versions

The EDB JDBC Connector is certified with Advanced Server version 9.5 and above.

2.2 Supported Platforms

The EDB JDBC Connector native packages are supported on the following 64 bit Linux platforms:

- Red Hat Enterprise Linux and CentOS (x86_64) 7.x and 8.x
- OEL Linux 7.x and 8.x
- PPC-LE 8 running RHEL or CentOS 7.x
- SLES 12.x
- Debian 9.x and 10.x
- Ubuntu 18.04 LTS and 20.04 LTS

The EDB JDBC Connector graphical installers are supported on the following Windows platforms:

64-bit Windows:

- Windows Server 2019
- Windows Server 2016

- Windows Server 2012 R2
- Windows 10
- Windows 8.1

32-bit Windows:

- Windows 10
- Windows 8.1

Advanced Server JDBC Connector Overview

Sun Microsystems created a standardized interface for connecting Java applications to databases known as Java Database Connectivity (JDBC). The EDB JDBC Connector connects a Java application to a Postgres database.

3.1 JDBC Driver Types

There are currently four different types of JDBC drivers, each with their own specific implementation, use and limitations. The EDB JDBC Connector is a Type 4 driver.

Type 1 Driver

- This driver type is the JDBC-ODBC bridge.
- It is limited to running locally.
- Must have ODBC installed on computer.
- Must have ODBC driver for specific database installed on computer.
- Generally can't run inside an applet because of Native Method calls.

Type 2 Driver

- This is the native database library driver.
- Uses Native Database library on computer to access database.
- Generally can't run inside an applet because of Native Method calls.

- Must have database library installed on client.

Type 3 Driver

- 100% Java Driver, no native methods.
- Does not require pre-installation on client.
- Can be downloaded and configured on-the-fly just like any Java class file.
- Uses a proprietary protocol for talking with a middleware server.
- Middleware server converts from proprietary calls to DBMS specific calls

Type 4 Driver

- 100% Java Driver, no native methods.
- Does not require pre-installation on client.
- Can be downloaded and configured on-the-fly just like any Java class file.
- Unlike Type III driver, talks directly with the DBMS server.
- Converts JDBC calls directly to database specific calls.

3.2 The JDBC Interface

The following figure shows the core API interfaces in the JDBC specification and how they relate to each other. These interfaces are implemented in the `java.sql` package.

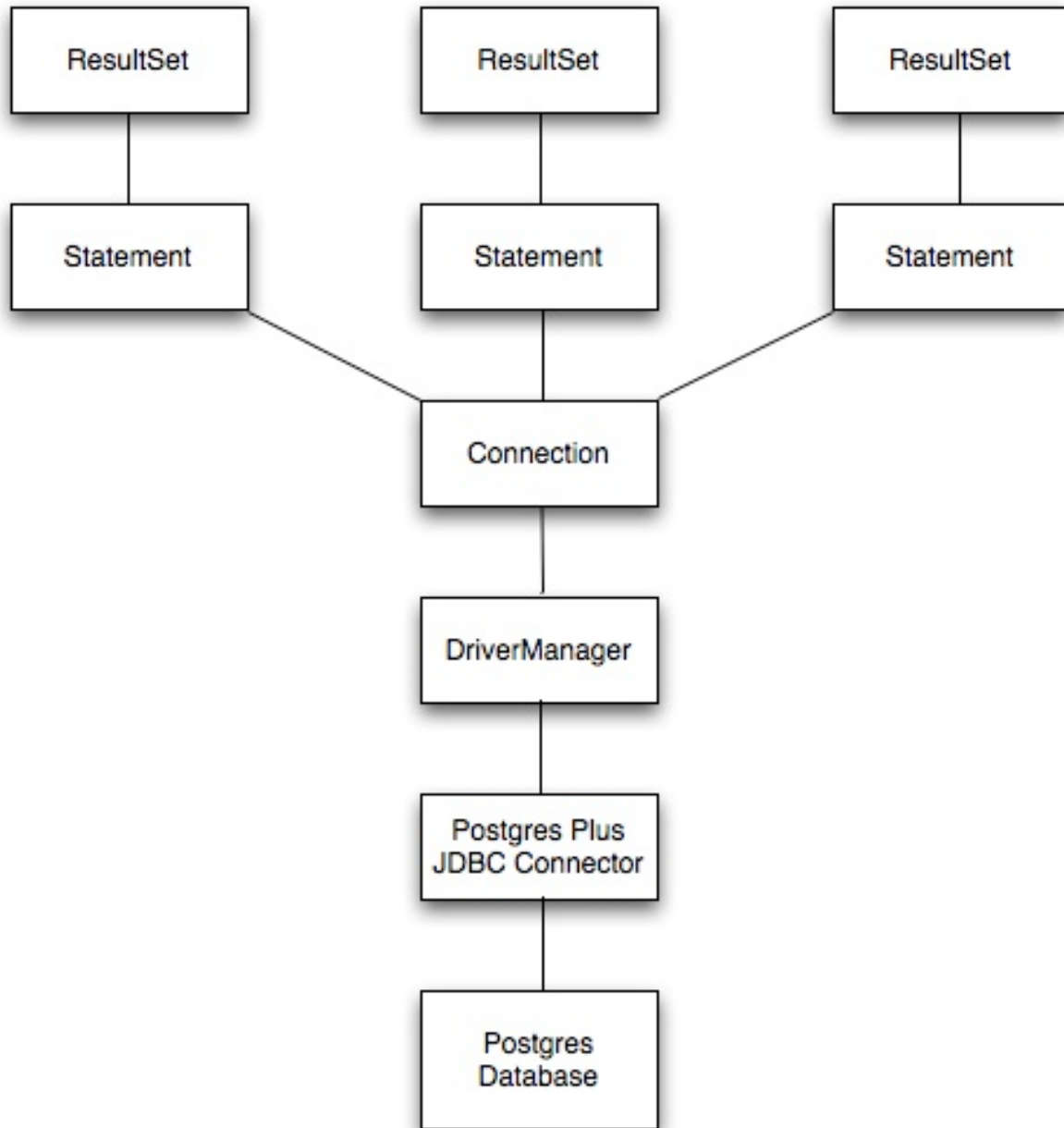


Fig. 1: *JDBC Class Relationships*

3.3 JDBC Classes and Interfaces

The core API is composed of classes and interfaces; these classes and interfaces work together as shown below:

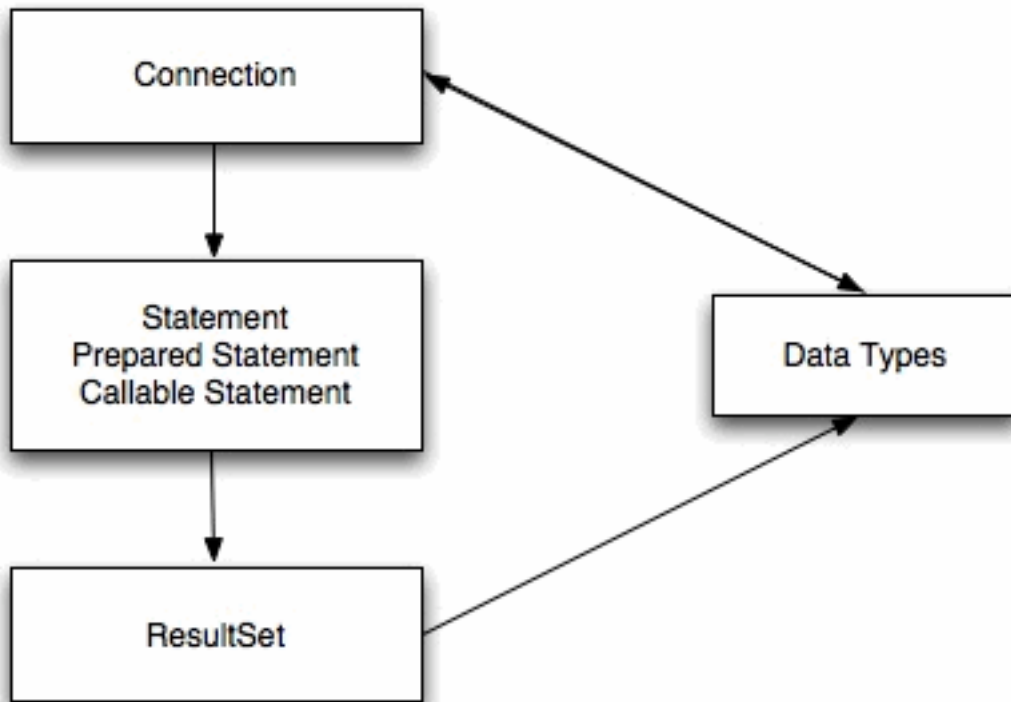


Fig. 2: Core Classes and Interfaces

3.4 The JDBC DriverManager

The figure below depicts the role of the `DriverManager` class in a typical JDBC application. The `DriverManager` acts as the bridge between a Java application and the backend database and determines which JDBC driver to use for the target database.

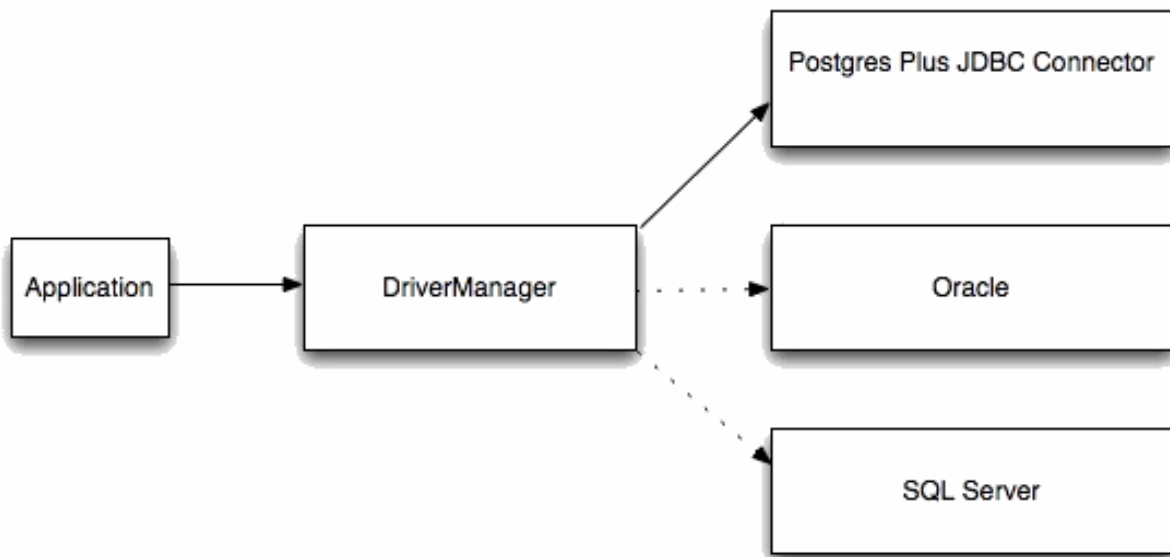


Fig. 3: *DriverManager/Drivers*

3.5 Advanced Server JDBC Connector Compatibility

EDB provides support for multiple JRE/JDK versions by providing appropriate JDBC drivers for each version of Java Virtual Machine. Use the following table to determine compatibility between your JRE/JDK version and the Advanced Server Driver.

Table – Advanced Server JDBC Driver Compatibility

JRE/JDK Version(s)	JDBC Specification	Advanced Server JDBC Driver	Community JDBC Driver
1.4, 1.5 (see Note 1)	3	edb-jdbc15.jar	postgresql-9.3.1103.JDBC3.jar
1.6 (see Note 2)	4	edb-jdbc16.jar	postgresql-42.2.12.jre6.jar
1.7 (see Note 3)	4.1	edb-jdbc17.jar	postgresql-42.2.12.jre7.jar
1.8 or newer	4.2	edb-jdbc18.jar	postgresql-42.2.12.jar

Note:

1. JRE/JDK versions 1.4 and 1.5 are no longer supported by the Advanced Server JDBC Connector as the JDBC driver file `edb-jdbc15.jar` is no longer provided.
2. The `edb-jdbc16.jar` file is not available for Linux on PowerPC 64 little endian (ppc64le), Debian/Ubuntu and RHEL 8 platforms.
3. The `edb-jdbc17.jar` file is not available for Debian/Ubuntu and RHEL 8 platforms.
4. Community version numbers are based on the `pgjdbc` version, not the PostgreSQL version.
5. Advanced Server JDBC releases are decoupled with EDB Postgres Advanced Server releases.

The following JDBC Compatibility rules apply:

- From Community website: “The PostgreSQL JDBC driver has some unique properties that you should be aware of before starting to develop any code for it. The current development driver supports six server versions and six java environments. This doesn’t mean that every feature must work in every combination, but a reasonable behaviour must be provided for non-supported versions. While this extra compatibility sounds like a lot of work, the actual goal is to reduce the amount of work by maintaining only one code base.”
- PgJDBC regression tests are run against all PostgreSQL versions since 8.4, including the development version.

For the supported community versions, see the [PostgreSQL JDBC Driver website](#).

Installing and Configuring the JDBC Connector

This chapter describes how to install and configure the EDB JDBC Connector.

Before installing the EDB JDBC Connector, you must have Java installed on your system; you can download a Java installer that matches your environment from the Oracle Java Downloads [website](#). Documentation that contains detailed installation instructions is available through the associated `Installation Instruction` links on the same page.

You can use the Advanced Server graphical installer or an RPM package to add the EDB JDBC Connector to your installation.

The following sections describe these installation methods.

4.1 Installing the Connector with an RPM Package

You can install the JDBC Connector using an RPM package on the following platforms:

- *RHEL 7*
- *RHEL 8*
- *CentOS 7*
- *CentOS 8*

4.1.1 On RHEL 7

Before installing the JDBC Connector, you must install the following prerequisite packages, and request credentials from EDB:

Install the `epel-release` package:

```
yum -y install https://dl.fedoraproject.org/pub/epel/epel-  
↪release-latest-7.noarch.rpm
```

Enable the optional, extras, and HA repositories:

```
subscription-manager repos --enable "rhel-*-optional-rpms" --  
↪enable "rhel-*-extras-rpms" --enable "rhel-ha-for-rhel-*-  
↪server-rpms"
```

You must also have credentials that allow access to the EDB repository. For information about requesting credentials, visit:

<https://info.enterprisedb.com/rs/069-ALB-339/images/Repository%20Access%2004-09-2019.pdf>

After receiving your repository credentials you can:

1. Create the repository configuration file.
2. Modify the file, providing your user name and password.
3. Install `edb-jdbc`.

Creating a Repository Configuration File

To create the repository configuration file, assume superuser privileges, and invoke the following command:

```
yum -y install https://yum.enterprisedb.com/edbrepos/edb-repo-  
↪latest.noarch.rpm
```


The repository configuration file is named `edb.repo`. The file resides in `/etc/yum.repos.d`.

Modifying the file, providing your user name and password

After creating the `edb.repo` file, use your choice of editor to ensure that the value of the `enabled` parameter is `1`, and replace the `username` and `password` placeholders in the `baseurl` specification with the name and password of a registered EDB user.

```
[edb]
name=EnterpriseDB RPMs $releasever - $basearch
baseurl=https://<username>:<password>@yum.enterprisedb.com/
↪edb/redhat/rhel-$releasever-$basearch
enabled=1
gpgcheck=1
gpgkey=file:///etc/pki/rpm-gpg/ENTERPRISEDB-GPG-KEY
```

Installing JDBC Connector

After saving your changes to the configuration file, use the following command to install the JDBC Connector:

```
yum install edb-jdbc
```

When you install an RPM package that is signed by a source that is not recognized by your system, `yum` may ask for your permission to import the key to your local server. If prompted, and you are satisfied that the packages come from a trustworthy source, enter `y`, and press `Return` to continue.

During the installation, `yum` may encounter a dependency that it cannot resolve. If it does, it will provide a list of the required dependencies that you must manually resolve.

4.1.2 On RHEL 8

Before installing the JDBC Connector, you must install the following prerequisite packages, and request credentials from EDB:

Install the `epel-release` package:

```
dnf -y install https://dl.fedoraproject.org/pub/epel/epel-
↳release-latest-8.noarch.rpm
```

Enable the `codeready-builder-for-rhel-8-*rpms` repository:

```
ARCH=$( /bin/arch )
subscription-manager repos --enable "codeready-builder-for-
↳rhel-8-{$ARCH}-rpms"
```

You must also have credentials that allow access to the EDB repository. For information about requesting credentials, visit:

<https://info.enterprisedb.com/rs/069-ALB-339/images/Repository%20Access%2004-09-2019.pdf>

After receiving your repository credentials you can:

1. Create the repository configuration file.
2. Modify the file, providing your user name and password.
3. Install `edb-jdbc`.

Creating a Repository Configuration File

To create the repository configuration file, assume superuser privileges, and invoke the following command:

```
dnf -y https://yum.enterprisedb.com/edbrepos/edb-repo-latest.
↳noarch.rpm
```

The repository configuration file is named `edb.repo`. The file resides in `/etc/yum.repos.d`.

Modifying the file, providing your user name and password

After creating the `edb.repo` file, use your choice of editor to ensure that the value of the `enabled` parameter is 1, and replace the `username` and `password` placeholders in the `baseurl` specification with the name and password of a registered EDB user.

```
[edb]
name=EnterpriseDB RPMs $releasever - $basearch
baseurl=https://<username>:<password>@yum.enterprisedb.com/
↳edb/redhat/rhel-$releasever-$basearch
```

(continues on next page)

(continued from previous page)

```
enabled=1
gpgcheck=1
gpgkey=file:///etc/pki/rpm-gpg/ENTERPRISEDB-GPG-KEY
```

Installing JDBC Connector

After saving your changes to the configuration file, use the below command to install the JDBC Connector:

```
dnf install edb-jdbc
```

When you install an RPM package that is signed by a source that is not recognized by your system, yum may ask for your permission to import the key to your local server. If prompted, and you are satisfied that the packages come from a trustworthy source, enter `y`, and press `Return` to continue.

During the installation, yum may encounter a dependency that it cannot resolve. If it does, it will provide a list of the required dependencies that you must manually resolve.

4.1.3 On CentOS 7

Before installing the JDBC Connector, you must install the following prerequisite packages, and request credentials from EDB:

Install the `epel-release` package:

```
yum -y install https://dl.fedoraproject.org/pub/epel/epel-  
→release-latest-7.noarch.rpm
```

Note: You may need to enable the `[extras]` repository definition in the `CentOS-Base.repo` file (located in `/etc/yum.repos.d`).

You must also have credentials that allow access to the EDB repository. For information about requesting credentials, visit:

<https://info.enterprisedb.com/rs/069-ALB-339/images/Repository%20Access%2004-09-2019.pdf>

After receiving your repository credentials you can:

1. Create the repository configuration file.
2. Modify the file, providing your user name and password.
3. Install `edb-jdbc`.

Creating a Repository Configuration File

To create the repository configuration file, assume superuser privileges, and invoke the following command:

```
yum -y install https://yum.enterprisedb.com/edbrepos/edb-repo-  
→latest.noarch.rpm
```

The repository configuration file is named `edb.repo`. The file resides in `/etc/yum.repos.d`.

Modifying the file, providing your user name and password

After creating the `edb.repo` file, use your choice of editor to ensure that the value of the `enabled` parameter is `1`, and replace the `username` and `password` placeholders in the `baseurl` specification with the name and password of a registered EDB user.

```
[edb]  
name=EnterpriseDB RPMs $releasever - $basearch  
baseurl=https://<username>:<password>@yum.enterprisedb.com/  
→edb/redhat/rhel-$releasever-$basearch  
enabled=1
```

(continues on next page)

(continued from previous page)

```
gpgcheck=1
gpgkey=file:///etc/pki/rpm-gpg/ENTERPRISEDB-GPG-KEY
```

Installing JDBC Connector

After saving your changes to the configuration file, use the following command to install the JDBC Connector:

```
yum install edb-jdbc
```

When you install an RPM package that is signed by a source that is not recognized by your system, yum may ask for your permission to import the key to your local server. If prompted, and you are satisfied that the packages come from a trustworthy source, enter `y`, and press `Return` to continue.

During the installation, yum may encounter a dependency that it cannot resolve. If it does, it will provide a list of the required dependencies that you must manually resolve.

4.1.4 On CentOS 8

Before installing the JDBC Connector, you must install the following prerequisite packages, and request credentials from EDB:

Install the `epel-release` package:

```
dnf -y install https://dl.fedoraproject.org/pub/epel/epel-
↳release-latest-8.noarch.rpm
```

Enable the `PowerTools` repository:

```
dnf config-manager --set-enabled PowerTools
```

You must also have credentials that allow access to the EDB repository. For information about requesting credentials, visit:

<https://info.enterprisedb.com/rs/069-ALB-339/images/Repository%20Access%2004-09-2019.pdf>

After receiving your repository credentials you can:

1. Create the repository configuration file.
2. Modify the file, providing your user name and password.
3. Install `edb-jdbc`.

Creating a Repository Configuration File

To create the repository configuration file, assume superuser privileges, and invoke the following command:

```
dnf -y install https://yum.enterprisedb.com/edbrepos/edb-repo-
↳latest.noarch.rpm
```

The repository configuration file is named `edb.repo`. The file resides in `/etc/yum/repos.d`.

Modifying the file, providing your user name and password

After creating the `edb.repo` file, use your choice of editor to ensure that the value of the `enabled` parameter is `1`, and replace the `username` and `password` placeholders in the `baseurl` specification with the name and password of a registered EDB user.

```
[edb]
name=EnterpriseDB RPMs $releasever - $basearch
baseurl=https://<username>:<password>@yum.enterprisedb.com/
↳edb/redhat/rhel-$releasever-$basearch
enabled=1
gpgcheck=1
gpgkey=file:///etc/pki/rpm-gpg/ENTERPRISEDB-GPG-KEY
```

Installing JDBC Connector

After saving your changes to the configuration file, use the following command to install the JDBC Connector:

```
dnf install edb-jdbc
```

When you install an RPM package that is signed by a source that is not recognized by your system, yum may ask for your permission to import the key to your local server. If prompted, and you are satisfied that the packages come from a trustworthy source, enter `y`, and press `Return` to continue.

During the installation, yum may encounter a dependency that it cannot resolve. If it does, it will provide a list of the required dependencies that you must manually resolve.

4.1.5 Updating an RPM Installation

If you have an existing JDBC Connector RPM installation, you can use `yum` or `dnf` to upgrade your repository configuration file and update to a more recent product version. To update the `edb.repo` file, assume superuser privileges and enter:

- On RHEL or CentOS 7:

```
yum upgrade edb-repo
```

- On RHEL or CentOS 8:

```
dnf upgrade edb-repo
```

`yum` or `dnf` will update the `edb.repo` file to enable access to the current EDB repository, configured to connect with the credentials specified in your `edb.repo` file. Then, you can use `yum` or `dnf` to upgrade any installed packages:

- On RHEL or CentOS 7:

```
yum upgrade edb-jdbc
```

- On RHEL or CentOS 8:

```
dnf upgrade edb-jdbc
```


4.2 Installing the Connector on an SLES 12 Host

You can use the `zypper` package manager to install the connector on an SLES 12 host. `zypper` will attempt to satisfy package dependencies as it installs a package, but requires access to specific repositories that are not hosted at EDB. Before installing the connector, use the following commands to add EDB repository configuration files to your SLES host:

```
zypper addrepo  
https://zypp.enterprisedb.com/suse/edb-sles.repo
```

After creating the repository configuration files, use the `zypper refresh` command to refresh the metadata on your SLES host to include the EDB repositories.

When prompted for a `User Name` and `Password`, provide your connection credentials for the EDB repository. To request credentials for the repository, visit [the EDB website](#).

Before installing EDB Postgres Advanced Server or supporting components, you must also add SUSEConnect and the SUSE Package Hub extension to the SLES host, and register the host with SUSE, allowing access to SUSE repositories. Use the commands:

```
zypper install SUSEConnect  
SUSEConnect -r 'REGISTRATION_CODE' -e 'EMAIL'  
SUSEConnect -p PackageHub/12.4/x86_64  
SUSEConnect -p sle-sdk/12.4/x86_64
```

For detailed information about registering a SUSE host, visit the [SUSE website](#).

Then, you can use the `zypper` utility to install the connector:

```
zypper install edb-jdbc
```

4.3 Installing the Connector on a Debian or Ubuntu Host

To install a DEB package on a Debian or Ubuntu host, you must have credentials that allow access to the EDB repository. To request credentials for the repository, visit [the EDB website](#).

The following steps will walk you through on using the EDB apt repository to install a DEB package. When using the commands, replace the `username` and `password` with the credentials provided by EDB.

1. Assume superuser privileges:

```
sudo su -
```

2. Configure the EDB repository:

On Debian 9:

```
sh -c 'echo "deb https://username:password@apt.
↪enterprisedb.com/$(lsb_release -cs)-edb/ $(lsb_release -
↪cs) main" > /etc/apt/sources.list.d/edb-$(lsb_release -
↪cs).list'
```

On Debian 10:

- a. Set up the EDB repository:

```
sh -c 'echo "deb [arch=amd64] https://apt.enterprisedb.com/
↪$(lsb_release -cs)-edb/ $(lsb_release -cs) main" > /etc/
↪apt/sources.list.d/edb-$(lsb_release -cs).list'
```

- b. Substitute your EDB credentials for the `username` and `password` in the following command:

```
sh -c 'echo "machine apt.enterprisedb.com login <username>
↪password <password>" > /etc/apt/auth.conf.d/edb.conf'
```

3. Add support to your system for secure APT repositories:

```
apt-get install apt-transport-https
```

4. Add the EDB signing key:

```
wget -q -O - https://<username>:<password>@apt.
↪enterprisedb.com/edb-deb.gpg.key | apt-key add -
```

5. Update the repository metadata:

```
apt-get update
```

6. Install DEB package:

```
apt-get install edb-jdbc
```

Note: By default, the Debian 9x and Ubuntu 18.04 platform installs Java version 10. Make sure you install Java version 8 on your system to run the EDB Java-based components.

4.4 Using the Graphical Installer to Install the Connector

You can use the EDB Connectors Installation wizard to add the JDBC connector to your system; the wizard is available at the [EDB website](#).

This section demonstrates using the Installation Wizard to install the Connectors on a Windows system. To open the Installation Wizard, download the installer, and then, right-click on the installer icon, and select `Run As Administrator` from the context menu.

When the `Language Selection` popup opens, select an installation language and click `OK` to continue to the `Setup` window.

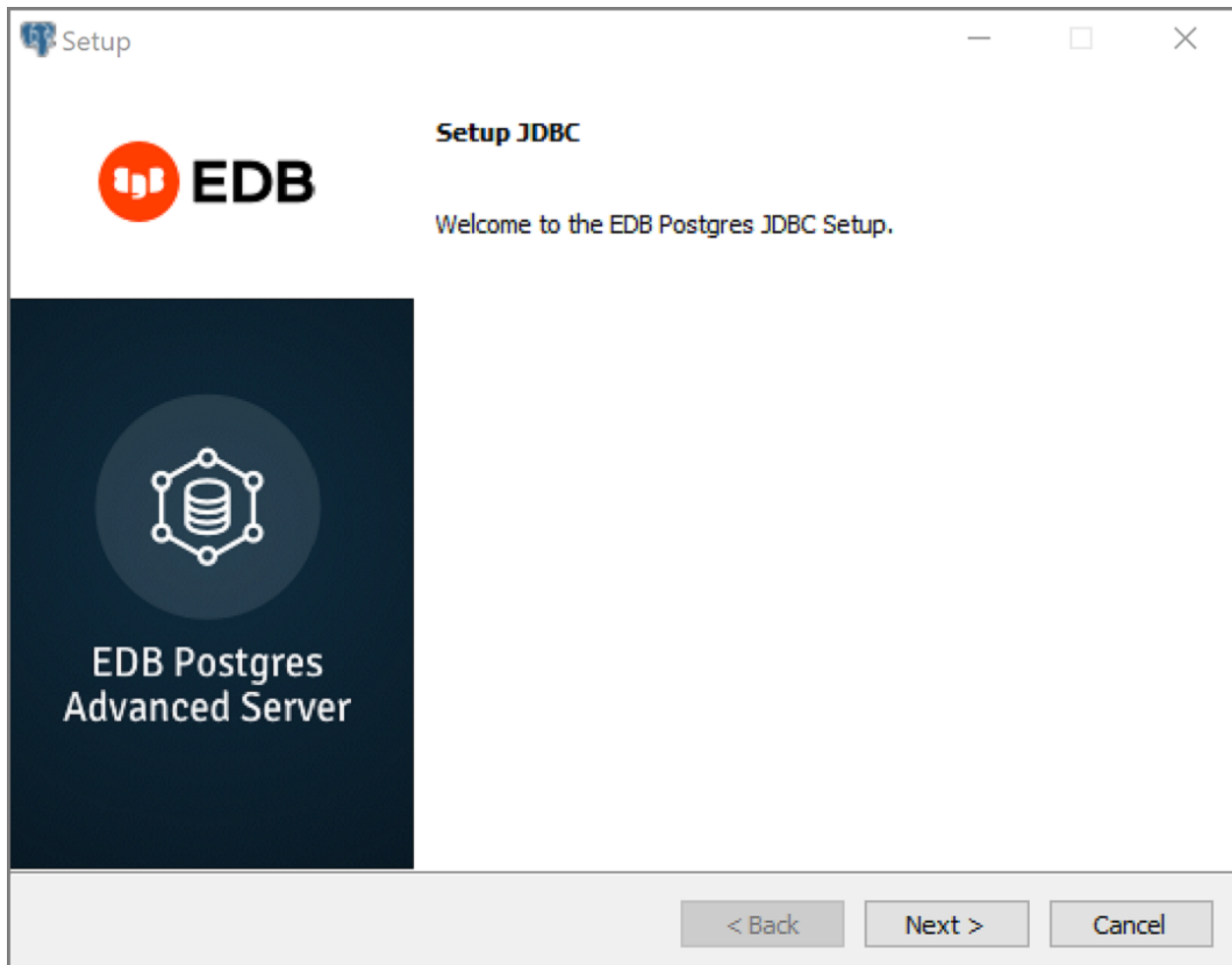


Fig. 1: *The JDBC Connector Installation wizard*

Click `Next` to continue.

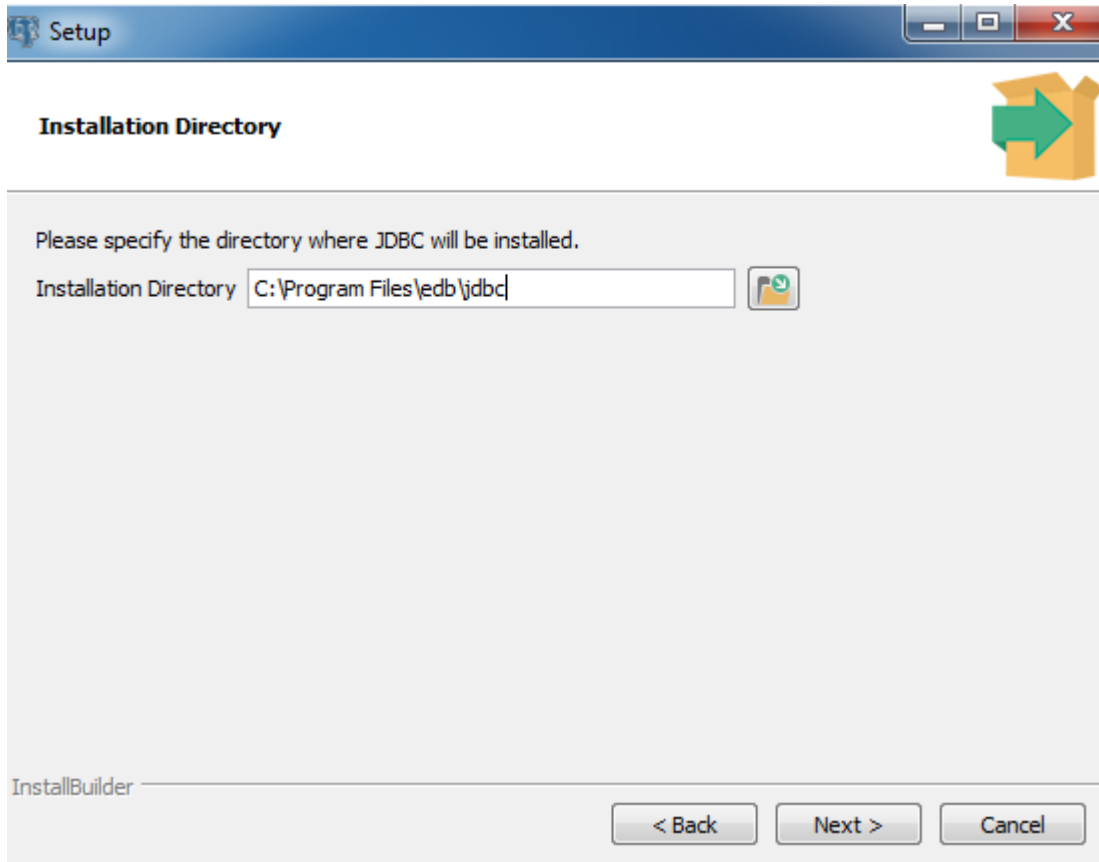


Fig. 2: *The Installation dialog*

Use the Installation Directory dialog to specify the directory in which the connector will be installed, and click Next to continue.

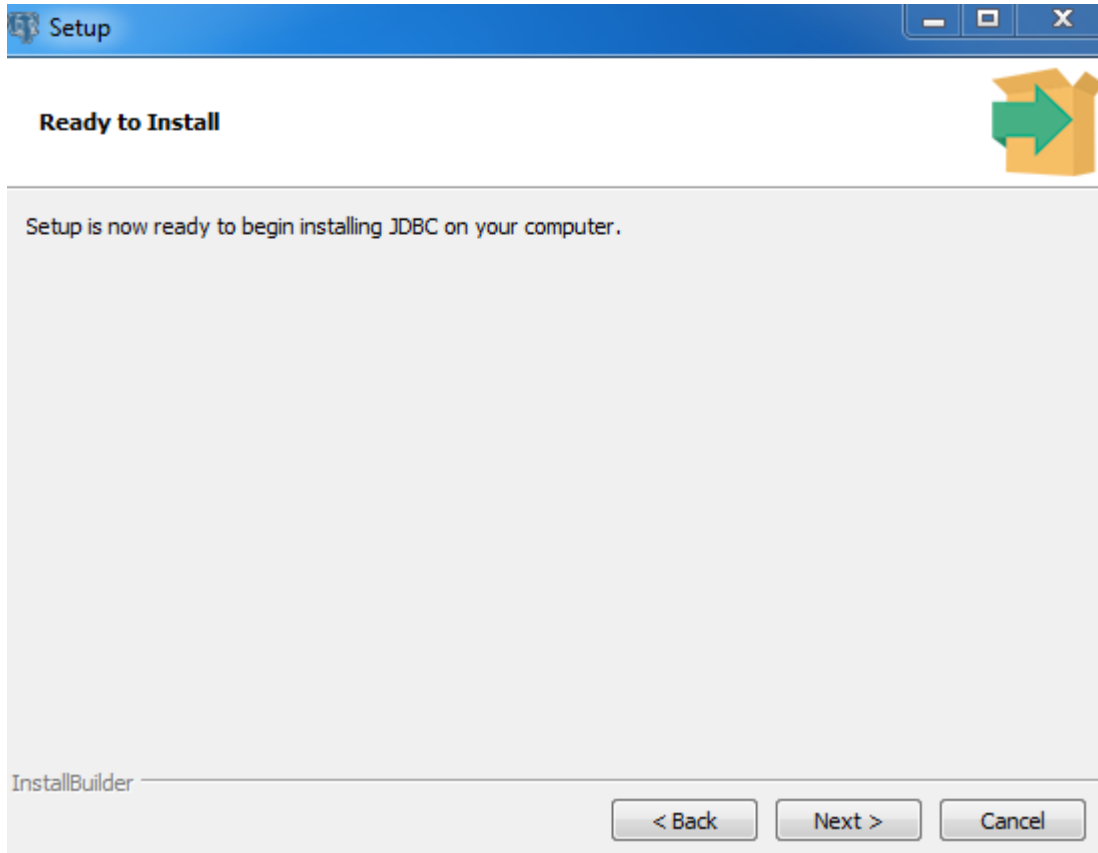


Fig. 3: *The Ready to Install dialog*

Click Next on the Ready to Install dialog to start the installation; popup dialogs confirm the progress of the installation wizard.

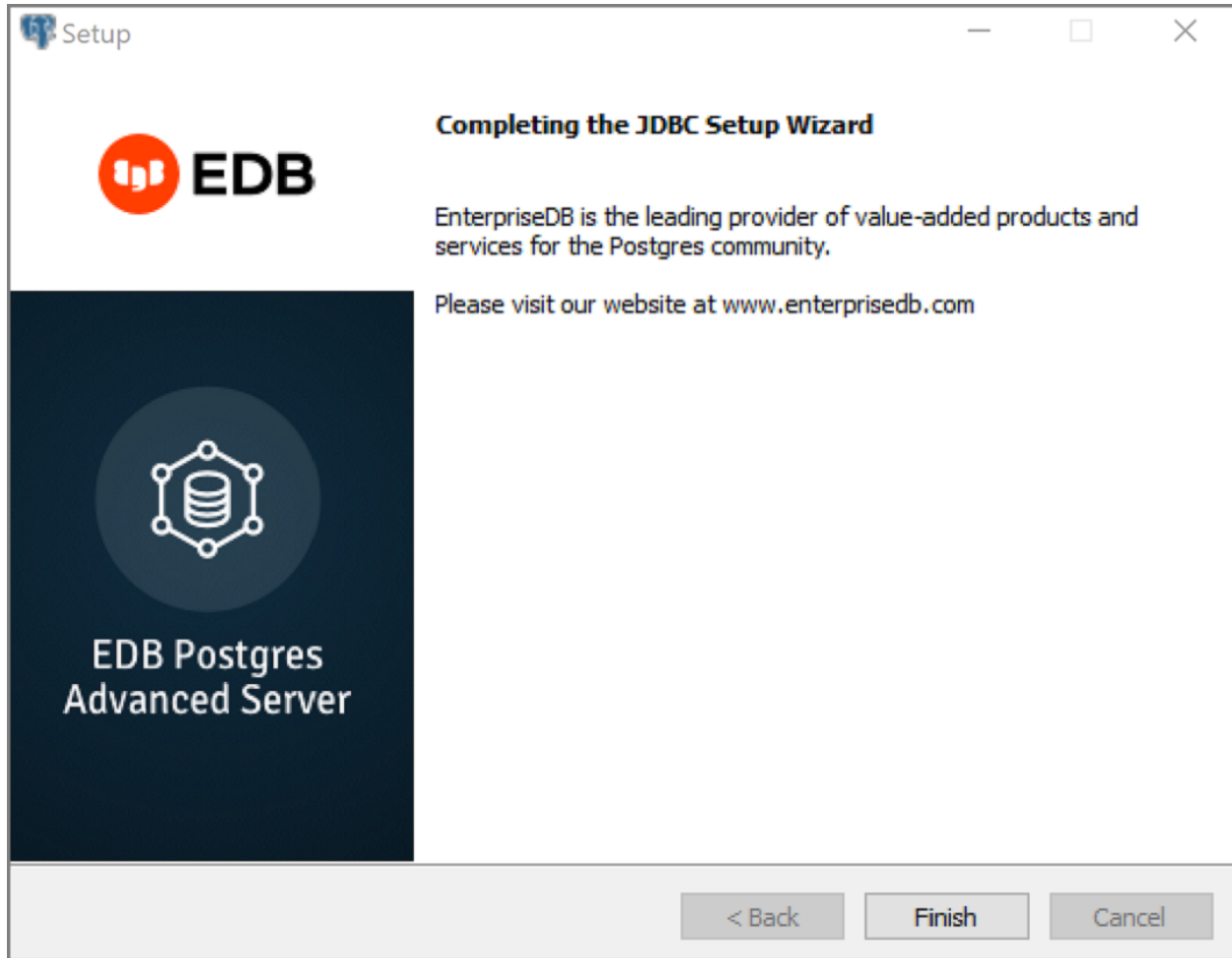


Fig. 4: *The installation is complete*

When the wizard informs you that it has completed the setup, click the `Finish` button to exit the dialog.

You can also use StackBuilder Plus to add or update the connector on an existing Advanced Server installation; to open StackBuilder Plus, select StackBuilder Plus from the Windows Apps menu.

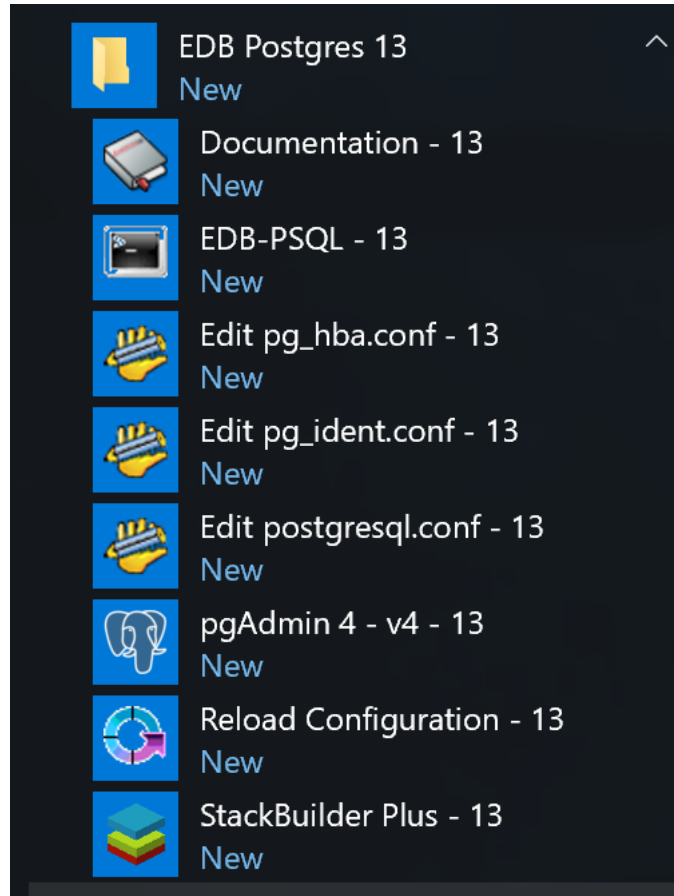


Fig. 5: *Starting StackBuilder Plus*

When StackBuilder Plus opens, follow the onscreen instructions. Select the EnterpriseDB JDBC Connector option from the Database Drivers node of the tree control.

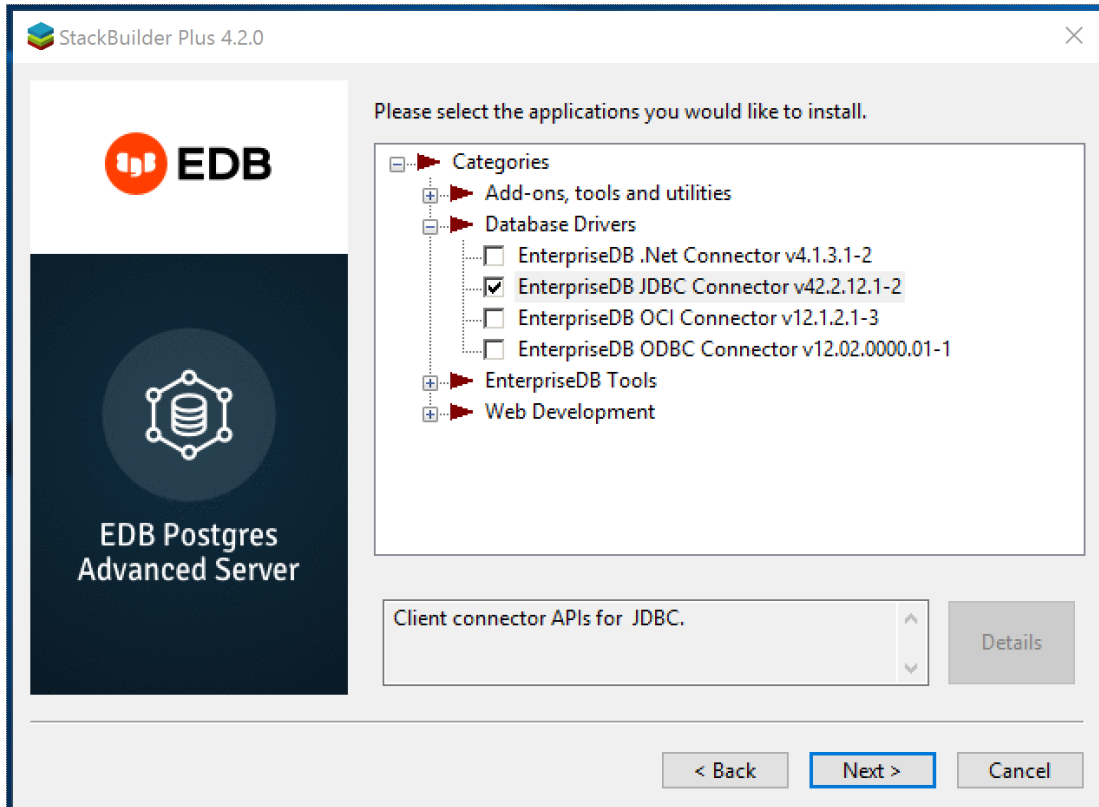


Fig. 6: *Selecting the Connectors installer*

Follow the directions of the onscreen wizard to add/update an installation of the EDB Connectors.

4.5 Configuring the Advanced Server JDBC Connector

Advanced Server ships with the following JDBC drivers:

- `edb-jdbc16.jar` supports JDBC version 4
- `edb-jdbc17.jar` supports JDBC version 4.1
- `edb-jdbc18.jar` supports JDBC version 4.2

Note: The `edb-jdbc16.jar` file is not available for Linux on PowerPC 64 little endian (ppc64le).

To make the JDBC driver available to Java, you must either copy the appropriate `java.jar` file for the JDBC version that you are using to your `$java_home/jre/lib/ext` directory or append the location of the `.jar` file to the `CLASSPATH` environment variable.

Note that if you choose to append the location of the `jar` file to the `CLASSPATH` environment variable, you must include the complete pathname:

```
/usr/edb/jdbc/edb-jdbcxx.jar
```

Using the Advanced Server JDBC Connector with Java applications

With Java and the EDB JDBC Connector in place, a Java application can access an Advanced Server database. Listing 1.1 creates an application that executes a query and prints the result set.

Listing 1.1

```
import java.sql.*;
public class ListEmployees
{
    public static void main(String[] args)
    {
        try
        {
            Class.forName("com.edb.Driver");
            String url      = "jdbc:edb://localhost:5444/edb";
            String user     = "enterprisedb";
            String password = "enterprisedb";
            Connection con  = DriverManager.getConnection(url, user, ↵
↵password);
            Statement stmt  = con.createStatement();
            ResultSet rs    = stmt.executeQuery("SELECT * FROM emp");
            while(rs.next())
            {
                System.out.println(rs.getString(1));
            }
        }
    }
}
```

(continues on next page)

(continued from previous page)

```
rs.close();
stmt.close();
con.close();
System.out.println("Command successfully executed");
}
catch(ClassNotFoundException e)
{
    System.out.println("Class Not Found : " + e.getMessage());
}
catch(SQLException exp)
{
    System.out.println("SQL Exception: " + exp.getMessage());
    System.out.println("SQL State:      " + exp.getSQLState());
    System.out.println("Vendor Error:   " + exp.getErrorCode());
}
}
}
```

This example is simple, but it demonstrates the fundamental steps required to interact with an Advanced Server database from a Java application:

- Load the JDBC driver
- Build connection properties
- Connect to the database server
- Execute an SQL statement
- Process the result set
- Clean up
- Handle any errors that may occur

5.1 Loading the Advanced Server JDBC Connector

The Advanced Server JDBC driver is written in Java and is distributed in the form of a compiled JAR (Java Archive) file. Use the `Class.forName()` method to load the driver. The `forName()` method dynamically loads a Java class at runtime. When an application calls the `forName()` method, the JVM (Java Virtual Machine) attempts to find the compiled form (the bytecode) that implements the requested class.

The Advanced Server JDBC driver is named `com.edb.Driver`:

```
Class.forName("com.edb.Driver");
```

After loading the bytecode for the driver, the driver registers itself with another JDBC class (named `DriverManager`) that is responsible for managing all the JDBC drivers installed on the current system.

If the JVM is unable to locate the named driver, it throws a `ClassNotFoundException` exception (which is intercepted with a `catch` block near the end of the program). The `DriverManager` is designed to handle multiple JDBC driver objects. You can write a Java application that connects to more than one database system via JDBC. The next section explains how to select a specific driver.

5.2 Connecting to the Database

After the driver has loaded and registered itself with the `DriverManager`, the `ListEmployees` class can attempt to connect to the database server, as shown in the following code fragment:

```
String url = "jdbc:edb://localhost:5444/edb";
String user = "enterprisedb";
String password = "enterprisedb";
Connection con = DriverManager.getConnection(url, user, password);
```

All JDBC connections start with the `DriverManager`. The `DriverManager` class offers a static method called `getConnection()` that is responsible for creating a connection to the database. When you call the `getConnection()` method, the `DriverManager` must decide which JDBC driver to use to connect to the database; that decision is based on a URL (Uniform Resource Locator) that you pass to `getConnection()`.

A JDBC URL takes the following general format:

```
jdbc:<driver>:<connection parameters>
```

The first component in a JDBC URL is always `jdbc`. When using the Advanced Server JDBC Connector, the second component (the driver) is `edb`.

The Advanced Server JDBC URL takes one of the following forms:

```
jdbc:edb:<database>
```

```
jdbc:edb://<host>/<database>
```

```
jdbc:edb://<host>:<port>/<database>
```

The following table shows the various connection parameters:

Table - Connection Parameters

Name	Description
host	The host name of the server. Defaults to localhost.
port	The port number the server is listening on. Defaults to the Advanced Server standard port number (5444).
database	The database name.

5.2.1 Additional Connection Properties

In addition to the standard connection parameters, the Advanced Server JDBC driver supports connection properties that control behavior specific to EDB. You can specify these properties in the connection URL or as a `Properties` object parameter passed to `DriverManager.getConnection()`. Listing 1.2 demonstrates how to use a `Properties` object to specify additional connection properties:

Listing 1.2

```
String url = "jdbc:edb://localhost/edb";
Properties props = new Properties();

props.setProperty("user", "enterprisedb");
props.setProperty("password", "enterprisedb");
props.setProperty("sslfactory", "com.edb.ssl.NonValidatingFactory");
props.setProperty("ssl", "true");

Connection con = DriverManager.getConnection(url, props);
```

Note: By default the combination of `SSL=true` and setting the connection URL parameter `sslfactory=org.postgresql.ssl.NonValidatingFactory` encrypts the connection but does not validate the SSL certificate. To enforce certificate validation, you must use a Custom `SSLSocketFactory`. For more details about writing a Custom `SSLSocketFactory`, review [the PostgreSQL JDBC driver documentation](#).

To specify additional connection properties in the URL, add a question mark and an ampersand-separated list of keyword-value pairs:

```
String url = "jdbc:edb://localhost/edb?user=enterprisedb&ssl=true";
```

Some of the additional connection properties are shown in the following table:

Table 5-2 - Additional Connection Properties

Name	Type	Description
user	String	The database user on whose behalf the connection is being made.
password	String	The database user's password.
ssl	Boolean	Requests an authenticated, encrypted SSL connection
loggerLevel	String	The logger level of the driver. The allowed values are OFF, DEBUG or TRACE. This enables the java.util.logging.Logger Level of the driver based on the following mapping of levels: DEBUG -> FINE, TRACE -> FINEST. The loggerLevel property is intended for debugging the driver, and not for general SQL query debugging.
loggerFile	String	The file name output of the logger. This parameter must be used together with loggerLevel. If set, the Logger uses a java.util.logging.FileHandler to write to a specified file. If the parameter is not set or the file can't be created, the java.util.logging.ConsoleHandler is used instead of java.util.logging.FileHandler.
charSet	String	The value of charSet determines the character set used for data sent to or received from the database.
prepareThreshold	Integer	The value of prepareThreshold determines the number of PreparedStatement executions required before switching to server side prepared statements. The default is five.
loadBalanceHosts	Boolean	In default mode (disabled) hosts are connected in the given order. If enabled, hosts are chosen randomly from the set of suitable candidates.
targetServerType	String	Allows opening connections to only servers with the required state. The allowed values are any, primary, secondary, preferSecondary, and preferSyncSecondary. The primary/secondary distinction is currently done by observing if the server allows writes. The value preferSecondary tries to connect to secondaries if any are available, otherwise allows connecting to the primary. The Advanced Server JDBC Connector supports preferSyncSecondary, which permits connection to only synchronous secondaries or the primary if there are no active synchronous secondaries.
skipQuotesOnReturning	Boolean	When set to true, column names from the RETURNING clause are not quoted. This eliminates a case-sensitive comparison of the column name. When set to false (the default setting), column names are quoted.

5.2.2 Preferring Synchronous Secondary Database Servers

The Advanced Server JDBC Connector supports the `preferSyncSecondary` option for the `targetServerType` connection property as noted in Table 5-2.

The `preferSyncSecondary` option provides a preference for synchronous, standby servers for failover connection, and thus ignoring asynchronous servers.

The specification of this capability in the connection URL is shown by the following syntax:

```
jdbc:edb://primary:port,secondary_1:port_1,secondary_2:port_2,.../  
database?targetServerType=preferSyncSecondary
```

Parameters

`primary:port`

The IP address or a name assigned to the primary database server followed by its port number. If `primary` is a name, it must be specified with its IP address in the `/etc/hosts` file on the host running the Java program. **Note:** The primary database server can be specified in any location in the list. It does not have to precede the secondary database servers.

`secondary_n:port_n`

The IP address or a name assigned to a standby, secondary database server followed by its port number. If `secondary_n` is a name, it must be specified with its IP address in the `/etc/hosts` file on the host running the Java program.

`database`

The name of the database to which the connection is to be made.

The following is an example of the connection URL:

```
String url = "jdbc:edb://primary:5300,secondary1:5400/edb?  
→targetServerType=preferSyncSecondary";  
con = DriverManager.getConnection(url, "enterprisedb", "edb");
```

The following characteristics apply to the `preferSyncSecondary` option:

- The primary database server may be specified in any location in the connection list.
- Connection for accessing the database for usage by the Java program is first attempted on a synchronous secondary. The secondary servers are available for read-only operations.
- No connection attempt is made to any servers running in asynchronous mode.
- The order in which connection attempts are made is determined by the `loadBalanceHosts` connection property as described in Table 5-2. If disabled, which is the default setting, connection attempts are made in the left-to-right order specified in the connection list. If enabled, connection attempts are made randomly.

- If connection cannot be made to a synchronous secondary, then connection to the primary database server is used. If the primary database server is not active, then the connection attempt fails.

The synchronous secondaries to be used for the `preferSyncSecondary` option must be configured for hot standby usage.

The following section provides a brief overview of setting up the primary and secondary database servers for hot standby, synchronous replication.

Configuring Primary and Secondary Database Servers Overview

The process for configuring a primary and secondary database servers are described in the PostgreSQL documentation.

For general information on hot standby usage, which is needed for the `preferSyncSecondary` option, see the [PostgreSQL core documentation](#).

For information about creating a base backup for the secondary database server from the primary, see Section 25.3.2, *Making a Base Backup* (describes usage of the `pg_basebackup` utility program) or Section 25.3.3, *Making a Base Backup Using the Low Level API* within Section 25.3 *Continuous Archiving and Point-in-Time Recovery (PITR)* in [The PostgreSQL Core Documentation](#).

For information on the configuration parameters that must be set for hot standby usage, see [Section 19.6, Replication](#).

The following section provides a basic example of setting up the primary and secondary database servers.

Example: Primary and Secondary Database Servers

In the example that follows, the:

- primary database server resides on host `192.168.2.24`, port `5444`
- Secondary database server is named `secondary1` and resides on host `192.168.2.22`, port `5445`
- Secondary database server is named `secondary2` and resides on host `192.162.2.24`, port `5446` (same host as the primary)

In the primary database server's `pg_hba.conf` file, there must be a replication entry for each unique replication database USER/ADDRESS combination for all secondary database servers. In the following example, the database superuser `enterprisedb` is used as the replication database user for both the `secondary1` database server on `192.168.2.22` and the `secondary2` database server that is local relative to the primary.

#	TYPE	DATABASE	USER	ADDRESS	METHOD
host	replication		enterprisedb	192.168.2.22/32	md5
host	replication		enterprisedb	127.0.0.1/32	md5

After the primary database server has been configured in the `postgresql.conf` file along with its `pg_hba.conf` file, database server `secondary1` is created by invoking the following command on host `192.168.2.22` for `secondary1`:

```
su - enterprisedb
Password:
-bash-4.1$ pg_basebackup -D /opt/secondary1 -h 192.168.2.24 -p 5444 -
↳Fp -R -X stream -l 'Secondary1'
```

On the secondary database server, `/opt/secondary1`, a `recovery.conf` file is generated in the database cluster, which has been edited in the following example by adding the `application_name=secondary1` setting as part of the `primary_conninfo` string and removal of some of the other unneeded options automatically generated by `pg_basebackup`. Also note the use of the `standby_mode = 'on'` parameter.

```
standby_mode = 'on'
primary_conninfo = 'user=enterprisedb password=password host=192.168.2.
↳24 port=5444 application_name=secondary1'
```

The application name `secondary1` must be included in the `synchronous_standby_names` parameter of the primary database server's `postgresql.conf` file.

The secondary database server (`secondary2`) is created in an alternative manner on the same host used by the primary:

```
su - enterprisedb
Password:
-bash-4.1$ psql -d edb -c "SELECT pg_start_backup('Secondary2') "
Password:
pg_start_backup
-----
0/6000028
(1 row)

-bash-4.1$ cp -rp /var/lib/edb/as12/data/opt/secondary2
-bash-4.1$ psql -d edb -c "SELECT pg_stop_backup() "
Password:
NOTICE: pg_stop_backup complete, all required WAL segments have been
↳archived
pg_stop_backup
-----
```

(continues on next page)

(continued from previous page)

```
0/6000130
(1 row)
```

On the secondary database server `/opt/secondary2`, create the `recovery.conf` file in the database cluster. Note the `application_name=secondary2` setting as part of the `primary_conninfo` string as shown in the following example. Also be sure to include the `standby_mode = 'on'` parameter.

```
standby_mode = 'on'
primary_conninfo = 'user=enterprisedb password=password host=localhost_
↳port=5444 application_name=secondary2'
```

The application name `secondary2` must be included in the `synchronous_standby_names` parameter of the primary database server's `postgresql.conf` file.

You must ensure the configuration parameter settings in the `postgresql.conf` file of the secondary database servers are properly set (particularly `hot_standby=on`).

Note: As of EDB Postgres Advanced Server v12, the `recovery.conf` file is no longer valid; it is replaced by the `standby.signal` file. As a result, `primary_conninfo` is moved from the `recovery.conf` file to the `postgresql.conf` file. The presence of `standby.signal` file signals the cluster to run in standby mode. Please note that even if you try to create a `recovery.conf` file manually and keep it under the data directory, the server will fail to start and throw an error.

The parameter `standby_mode=on` is also removed from EDB Postgres Advanced Server v12, and the `trigger_file` parameter name is changed to `promote_trigger_file`.

The following table lists the basic `postgresql.conf` configuration parameter settings of the primary database server as compared to the secondary database servers:

Table - Primary/Secondary Configuration Parameters

Parameter	Primary	Secondary	Description
<code>archive_mode</code>	<code>on</code>	<code>off</code>	Completed WAL segments sent to archive storage
<code>archive_command</code>	<code>cp %p /archive_dir/%f</code>	<code>n/a</code>	Archive completed WAL segments
<code>wal_level</code> (9.5 or prior)	<code>hot_standby</code>	<code>minimal</code>	Information written to WAL segment
<code>wal_level</code> (9.6 or later)	<code>replica</code>	<code>minimal</code>	Information written to WAL segment
<code>max_wal_senders</code>	<i>n</i> (positive integer)	<code>0</code>	Maximum concurrent connections from standby servers
<code>wal_keep_segments</code>	<i>n</i> (positive integer)	<code>0</code>	Minimum number of past log segments to keep for standby servers
<code>synchronous_standby_names</code>	<i>n</i> (<i>secondary1</i> , <i>secondary2</i> ,...)	<code>n/a</code>	List of standby servers for synchronous replication. Must be present to enable synchronous replication. These are obtained from the <code>application_name</code> option of the <code>primary_conninfo</code> parameter in the <code>recovery.conf</code> file of each standby server.
<code>hot_standby</code>	<code>off</code>	<code>on</code>	Client application can connect and run queries on the secondary server in standby mode

The secondary database server (`secondary1`) is started:

```
-bash-4.1$ pg_ctl start -D /opt/secondary1 -l logfile -o "-p 5445"
server starting
```

The secondary database server (`secondary2`) is started:

```
-bash-4.1$ pg_ctl start -D /opt/secondary2/data -l logfile -o "-p 5446"
server starting
```

To ensure that the secondary database servers are properly set up in synchronous mode, use the following query on the primary database server. Note that the `sync_state` column lists applications `secondary1` and `secondary2` as `sync`.

```
edb=# SELECT username, application_name, client_addr, client_port, sync_
↪state FROM pg_stat_replication;
   username   | application_name | client_addr | client_port | sync_
↪state
-----+-----+-----+-----+-----
↪----
 enterprisedb | secondary1      | 192.168.2.22 |      53525 | sync
 enterprisedb | secondary2      | 127.0.0.1    |      36214 | sync
(2 rows)
```

The connection URL is:

```
String url = "jdbc:edb://primary:5444,secondary1:5445,secondary2:5446/
↪edb?targetServerType=preferSyncSecondary";
con = DriverManager.getConnection(url, "enterprisedb", "password");
```

The `/etc/hosts` file on the host running the Java program contains the following entries with the server names specified in the connection URL string:

```
192.168.2.24      localhost.localdomain primary
192.168.2.22      localhost.localdomain secondary1
192.168.2.24      localhost.localdomain secondary2
```

For this example, the preferred synchronous secondary connection option results in the first usage attempt made on `secondary1`, then on `secondary2` if `secondary1` is not active, then on the primary if both `secondary1` and `secondary2` are not active as demonstrated by the following program that displays the IP address and port of the database server to which the connection is made.

```
import java.sql.*;
public class InetServer
{
    public static void main(String[] args)
    {
        try
        {
            Class.forName("com.edb.Driver");
            String url =
"jdbc:edb://primary:5444,secondary1:5445,secondary2:5446/edb?
↪targetServerType=preferSyncSecondary";
            String user = "enterprisedb";
            String password = "password";
            Connection con = DriverManager.getConnection(url, user,
↪password);
                                                                 (continues on next page)
```

(continued from previous page)

```

        ResultSet rs = con.createStatement().executeQuery("SELECT inet_
→server_addr() || ':' || inet_server_port()");
        rs.next();
        System.out.println(rs.getString(1));

        rs.close();
        con.close();
        System.out.println("Command successfully executed");
    }
    catch(ClassNotFoundException e)
    {
        System.out.println("Class Not Found : " + e.getMessage());
    }
    catch(SQLException exp)
    {
        System.out.println("SQL Exception: " + exp.getMessage());
        System.out.println("SQL State:      " + exp.getSQLState());
        System.out.println("Vendor Error:  " + exp.getErrorCode());
    }
}
}

```

Case 1: When all database servers are active, connection is made to secondary1 on 192.168.2.22 port 5445.

```

$ java InetServer
192.168.2.22/32:5445
Command successfully executed

```

Case 2: When secondary1 is shut down, connection is made to secondary2 on 192.168.2.24 port 5446.

```

bash-4.1$ /usr/edb/as12/bin/pg_ctl stop -D /opt/secondary1
waiting for server to shut down.... done
server stopped

```

```

$ java InetServer
192.168.2.24/32:5446
Command successfully executed

```

Case 3: When secondary2 is also shut down, connection is made to the primary on 192.168.2.24 port 5444.

```

bash-4.1$ /usr/edb/as12/bin/pg_ctl stop -D /opt/secondary2/data

```

(continues on next page)

(continued from previous page)

```
waiting for server to shut down.... done  
server stopped
```

```
$ java InetServer  
192.168.2.24/32:5444  
Command successfully executed
```


5.3 Executing SQL Statements through Statement Objects

After loading the Advanced Server JDBC Connector driver and connecting to the server, the code in the sample application builds a JDBC `Statement` object, executes an SQL query, and displays the results.

A `Statement` object sends SQL statements to a database. There are three kinds of `Statement` objects. Each is specialized to send a particular type of SQL statement:

- A `Statement` object is used to execute a simple SQL statement with no parameters.
- A `PreparedStatement` object is used to execute a pre-compiled SQL statement with or without `IN` parameters.
- A `CallableStatement` object is used to execute a call to a database stored procedure.

You must construct a `Statement` object before executing an SQL statement. The `Statement` object offers a way to send a SQL statement to the server (and gain access to the result set). Each `Statement` object belongs to a `Connection`; use the `createStatement()` method to ask the `Connection` to create the `Statement` object.

A `Statement` object defines several methods to execute different types of SQL statements. In the sample application, the `executeQuery()` method executes a `SELECT` statement:

```
Statement stmt = con.createStatement();
ResultSet rs = stmt.executeQuery("SELECT * FROM emp");
```

The `executeQuery()` method expects a single argument: the SQL statement that you want to execute. `executeQuery()` returns data from the query in a `ResultSet` object. If the server encounters an error while executing the SQL statement provided, it throws an `SQLException` (and does not return a `ResultSet`).

5.3.1 Using Named Notation with a CallableStatement Object

The JDBC Connector (Advanced Server version 9.6 and later) supports the use of named parameters when instantiating a `CallableStatement` object. This syntax is an extension of JDBC supported syntax, and does not conform to the JDBC standard.

You can use a `CallableStatement` object to pass parameter values to a stored procedure. You can assign values to IN, OUT, and INOUT parameters with a `CallableStatement` object.

When using the `CallableStatement` class, you can use ordinal notation or named notation to specify values for an actual arguments. You must set a value for each IN or INOUT parameter marker in a statement.

When using ordinal notation to pass values to a `CallableStatement` object, you should use the setter method that corresponds to the parameter type. For example, when passing a `STRING` value, use the `setString` setter method. Each parameter marker within a statement (?) represents an ordinal value. When using ordinal parameters, you should pass the actual parameter values to the statement in the order that the formal arguments are specified within the procedure definition.

You can also use named parameter notation when specifying argument values for a `CallableStatement` object. Named parameter notation allows you to supply values for only those parameters that are required by the procedure, omitting any parameters that have acceptable default values. You can also specify named parameters in any order.

When using named notation, each parameter name should correspond to a `COLUMN_NAME` returned by a call to the `DatabaseMetaData.getProcedureColumns` method. You should use the `=>` token when including a named parameter in a statement call.

Use the `registerOutParameter` method to identify each OUT or INOUT parameter marker in the statement.

Examples

The following examples demonstrate using the `CallableStatement` method to provide parameters to a procedure with the following signature:

```
PROCEDURE hire_emp (ename VARCHAR2
empno NUMBER
job VARCHAR2
sal NUMBER
hiredate DATE DEFAULT now(),
mgr NUMBER DEFAULT 7100,
deptno NUMBER
)
```

The following example uses ordinal notation to provide parameters:

```
CallableStatement cstmt = con.prepareCall
("{CALL hire_emp(?,?,?,?,?,?,?)}");
//Bind a value to each parameter.
cstmt.setString(1, "SMITH");
cstmt.setInt(2, 8888);
cstmt.setString(3, "Sales");
cstmt.setInt(4, 5500);
cstmt.setDate(5, "2016-06-01");
cstmt.setInt(6, 7566);
cstmt.setInt(7, 30);
```

The following example uses named notation to provide parameters; using named notation, you can omit parameters that have default values or re-order parameters:

```
CallableStatement cstmt = con.prepareCall
("{CALL hire_emp(ename => ?,
job => ?,
empno => ?,
sal => ?,
deptno => ?
)}");

//Bind a value to each parameter.
cstmt.setString("ename", "SMITH");
cstmt.setInt("empno", 8888);
cstmt.setString("job", "Sales");
cstmt.setInt("sal", 5500);
cstmt.setInt("deptno", 30);
```

5.4 Retrieving Results from a ResultSet Object

A `ResultSet` object is the primary storage mechanism for the data returned by an SQL statement. Each `ResultSet` object contains both data and metadata (in the form of a `ResultSetMetaData` object). `ResultSetMetaData` includes useful information about results returned by the SQL command: column names, column count, row count, column length, and so on.

To access the row data stored in a `ResultSet` object, an application calls one or more `getter` methods. A `getter` method retrieves the value in particular column of the current row. There are many different `getter` methods; each method returns a value of a particular type. For example, the `getString()` method returns a `STRING` type; the `getDate()` method returns a `Date`, and the `getInt()` method returns an `INT` type. When an application calls a `getter` method, JDBC tries to convert the value into the requested type.

Each `ResultSet` keeps an internal pointer that point to the current row. When the `executeQuery()` method returns a `ResultSet`, the pointer is positioned before the first row; if an application calls a `getter` method before moving the pointer, the `getter` method will fail. To advance to the next (or first) row, call the `ResultSet`'s `next()` method. `ResultSet.next()` is a boolean method; it returns `TRUE` if there is another row in the `ResultSet` or `FALSE` if you have moved past the last row.

After moving the pointer to the first row, the sample application uses the `getString()` `getter` method to retrieve the value in the first column and then prints that value. Since `ListEmployees` calls `rs.next()` and `rs.getString()` in a loop, it processes each row in the result set. `ListEmployees` exits the loop when `rs.next()` moves the pointer past the last row and returns `FALSE`.

```
while(rs.next())
{
System.out.println(rs.getString(1));
}
```

When using the `ResultSet` interface, remember:

- You must call `next()` before reading any values. `next()` returns `true` if another row is available and prepares the row for processing.
- Under the JDBC specification, an application should access each row in the `ResultSet` only once. It is safest to stick to this rule, although at the current time, the Advanced Server JDBC driver will allow you to access a field as many times as you want.
- When you've finished using a `ResultSet`, call the `close()` method to free the resources held by that object.

5.5 Freeing Resources

Every JDBC object consumes some number of resources. A `ResultSet` object, for example, may contain a copy of every row returned by a query; a `Statement` object may contain the text of the last command executed, and so forth. It's usually a good idea to free up those resources when the application no longer needs them. The sample application releases the resources consumed by the `Result`, `Statement`, and `Connection` objects by calling each object's `close()` method:

```
rs.close();  
stmt.close();  
con.close();
```

If you attempt to use a JDBC object after closing it, that object will throw an error.

5.6 Handling Errors

When connecting to an external resource (such as a database server), errors are bound to occur; your code should include a way to handle these errors. Both JDBC and the Advanced Server JDBC Connector provide various types of error handling. The *ListEmployees class example* demonstrates how to handle an error using `try/catch` blocks.

When a JDBC object throws an error (an object of type `SQLException` or of a type derived from `SQLException`), the `SQLException` object exposes three different pieces of error information:

- The error message.
- The SQL State.
- A vendor-specific error code.

In the example, the following code displays the value of these components should an error occur:

```
System.out.println("SQL Exception: " + exp.getMessage());
System.out.println("SQL State: " + exp.getSQLState());
System.out.println("Vendor Error: " + exp.getErrorCode());
```

For example, if the server tries to connect to a database that does not exist on the specified host, the following error message is displayed:

```
SQL Exception: FATAL: database "acctg" does not exist
SQL State: 3D000
Vendor Error: 0
```

Executing SQL Commands with `executeUpdate()`

In the previous example `ListEmployees` executed a `SELECT` statement using the `Statement.executeQuery()` method. `executeQuery()` was designed to execute query statements so it returns a `ResultSet` that contains the data returned by the query. The `Statement` class offers a second method that you should use to execute other types of commands (`UPDATE`, `INSERT`, `DELETE`, and so forth). Instead of returning a collection of rows, the `executeUpdate()` method returns the number of rows affected by the SQL command it executes.

The signature of the `executeUpdate()` method is:

```
int executeUpdate(String sqlStatement)
```

Provide this method a single parameter of type `String`, containing the SQL command that you wish to execute.

6.1 Using executeUpdate() to INSERT Data

The example that follows demonstrates using the `executeUpdate()` method to add a row to the `emp` table.

NOTE: the following example is not a complete application, only a method - the samples in the remainder of this document do not include the code required to set up and tear down a `Connection`. To experiment with the example, you must provide a class that invokes the sample code.

Listing 1.3

```
public void updateEmployee(Connection con)
{
    try
    {
        Console console = System.console();
        Statement stmt = con.createStatement();

        String empno = console.readLine("Employee Number :");
        String ename = console.readLine("Employee Name :");
        int rowcount = stmt.executeUpdate("INSERT INTO emp(empno, ename)
            VALUES ('+empno+', '"+ename+')");
        System.out.println("");
        System.out.println("Success - "+rowcount+" rows affected.");
    }
    catch(Exception err)
    {
        System.out.println("An error has occurred.");
        System.out.println("See full details below.");
        err.printStackTrace();
    }
}
```

The `updateEmployee()` method expects a single argument from the caller, a `Connection` object that must be connected to an Advanced Server database:

```
public void updateEmployee(Connection con)
```

Next, `updateEmployee()` prompts the user for an employee name and number:

```
String empno = console.readLine("Employee Number :");
String ename = console.readLine("Employee Name :");
```

`updateEmployee()` concatenates the values returned by `console.readLine()` into an `INSERT` statement and pass the result to the `executeUpdate()` method.


```
int rowcount = stmt.executeUpdate("INSERT INTO emp(empno, ename)
VALUES (" + empno + ", '" + ename + "')");
```

For example, if the user enters an employee number of 6000 and a name of Jones, the INSERT statement passed to `executeUpdate()` will look like this:

```
INSERT INTO emp(empno, ename) VALUES(6000, 'Jones');
```

The `executeUpdate()` method returns the number of rows affected by the SQL statement (an INSERT typically affects one row, but an UPDATE or DELETE statement can affect more). If `executeUpdate()` returns without throwing an error, the call to `System.out.println` displays a message to the user that shows the number of rows affected.

```
System.out.println("");
System.out.println("Success - "+rowcount+" rows affected.");
```

The catch block displays an appropriate error message to the user if the program encounters an exception:

```
{
System.out.println("An error has occurred.");
System.out.println("See full details below.");
err.printStackTrace();
}
```

6.1.1 executeUpdate() Syntax Examples

You can use `executeUpdate()` with any SQL command that does not return a result set. Some simple syntax examples using `executeUpdate()` with SQL commands follow:

To use the UPDATE command with `executeUpdate()` to update a row:

```
stmt.executeUpdate("UPDATE emp SET ename='"+ename+"' WHERE empno=
→"+empno);
```

To use the DELETE command with `executeUpdate()` to remove a row from a table:

```
stmt.executeUpdate("DELETE FROM emp WHERE empno="+empno);
```

To use the DROP TABLE command with `executeUpdate()` to delete a table from a database:

```
stmt.executeUpdate("DROP TABLE tablename");
```

To use the CREATE TABLE command with `executeUpdate()` to add a new table to a database:

```
stmt.executeUpdate("CREATE TABLE tablename (fieldname NUMBER(4,2),
fieldname2 VARCHAR2(30))");
```

To use the ALTER TABLE command with `executeUpdate()` to change the attributes of a table:

```
stmt.executeUpdate("ALTER TABLE tablename ADD COLUMN colname BOOLEAN");
```

Adding a Graphical Interface to a Java Program

With a little extra work, you can add a graphical user interface to a program - the next example (Listing 1.4) demonstrates how to write a Java application that creates a `JTable` (a spreadsheet-like graphical object) and copies the data returned by a query into that `JTable`.

Note: The following sample application is a method, not a complete application. To call this method, provide an appropriate `main()` function and wrapper class.

Listing 1.4

```
import java.sql.*;
import java.util.Vector;
import javax.swing.JFrame;
import javax.swing.JScrollPane;
import javax.swing.JTable;

...
public void showEmployees(Connection con)
{
    try
    {
        Statement stmt = con.createStatement();
        ResultSet rs = stmt.executeQuery("SELECT * FROM emp");
        ResultSetMetaData rsmd = rs.getMetaData();
        Vector labels = new Vector();
        for(int column = 0; column < rsmd.getColumnCount(); column++)
```

(continues on next page)

(continued from previous page)

```

        labels.addElement(rsmd.getColumnLabel(column + 1));

        Vector rows = new Vector();
        while(rs.next())
        {
            Vector rowValues = new Vector();
            for(int column = 0; column < rsmd.getColumnCount(); column++)
                rowValues.addElement(rs.getString(column + 1));
            rows.addElement(rowValues);
        }

        JTable table = new JTable(rows, labels);
        JFrame jf = new JFrame("Browsing table: EMP (from EnterpriseDB)");
        jf.getContentPane().add(new JScrollPane(table));
        jf.setSize(400, 400);
        jf.setVisible(true);
        jf.setDefaultCloseOperation(JFrame.EXIT_ON_CLOSE);
        System.out.println("Command successfully executed");
    }
    catch(Exception err)
    {
        System.out.println("An error has occurred.");
        System.out.println("See full details below.");
        err.printStackTrace();
    }
}

```

Before writing the `showEmployees()` method, you must import the definitions for a few JDK-provided classes:

```

import java.sql.*;
import java.util.Vector;
import javax.swing.JFrame;
import javax.swing.JScrollPane;
import javax.swing.JTable;

```

The `showEmployees()` method expects a `Connection` object to be provided by the caller; the `Connection` object must be connected to the Advanced Server:

```

public void showEmployees(Connection con)

```

`showEmployees()` creates a `Statement` and uses the `executeQuery()` method to execute an SQL query that generates an employee list:

```

Statement stmt = con.createStatement();
ResultSet rs = stmt.executeQuery("SELECT * FROM emp");

```

As you would expect, `executeQuery()` returns a `ResultSet` object. The `ResultSet` object contains the metadata that describes the shape of the result set (that is, the number of rows and columns in the result set, the data type for each column, the name of each column, and so forth). You can extract the metadata from the `ResultSet` by calling the `getMetaData()` method:

```
ResultSetMetaData rsmd = rs.getMetaData();
```

Next, `showEmployees()` creates a `Vector` (a one dimensional array) to hold the column headers and then copies each header from the `ResultSetMetaData` object into the vector:

```
Vector labels = new Vector();
for(int column = 0; column < rsmd.getColumnCount(); column++)
{
    labels.addElement(rsmd.getColumnLabel(column + 1));
}
```

With the column headers in place, `showEmployees()` extracts each row from the `ResultSet` and copies it into a new vector (named `rows`). The `rows` vector is actually a vector of vectors: each entry in the `rows` vector contains a vector that contains the data values in that row. This combination forms the two-dimensional array that you will need to build a `JTable`. After creating the `rows` vector, the program reads through each row in the `ResultSet` (by calling `rs.next()`). For each column in each row, a getter method extracts the value at that row/column and adds the value to the `rowValues` vector. Finally, `showEmployee()` adds each `rowValues` vector to the `rows` vector:

```
Vector rows = new Vector();
while(rs.next())
{
    Vector rowValues = new Vector();
    for(int column = 0; column < rsmd.getColumnCount(); column++)
        rowValues.addElement(rs.getString(column + 1));
    rows.addElement(rowValues);
}
```

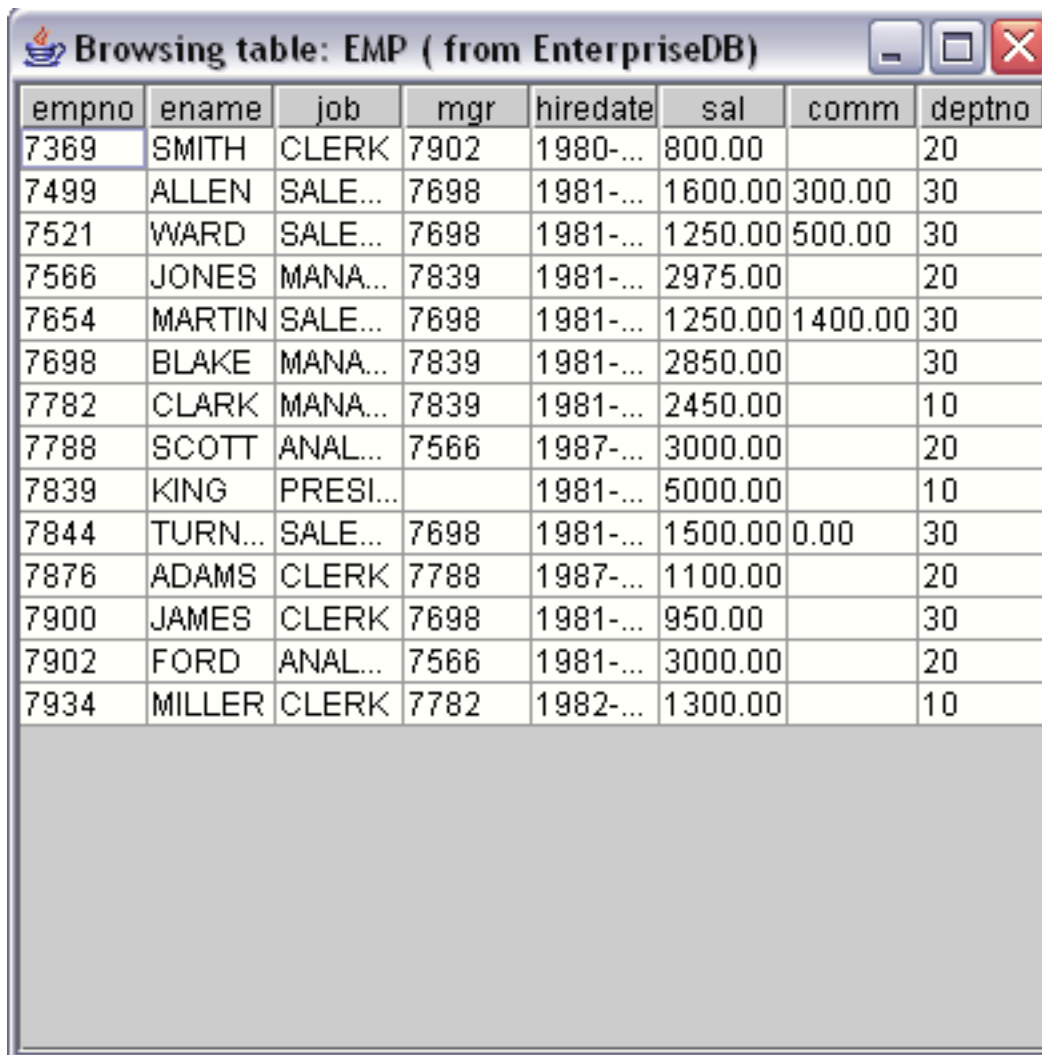
At this point, the vector (`labels`) contains the column headers, and a second two-dimensional vector (`rows`) contains the data for the table. Now you can create a `JTable` from the vectors and a `JFrame` to hold the `JTable`:

```
JTable table = new JTable(rows, labels);
JFrame jf = new JFrame("Browsing table: EMP (from EnterpriseDB)");
jf.getContentPane().add(new JScrollPane(table));
jf.setSize(400, 400);
jf.setVisible(true);
jf.setDefaultCloseOperation(JFrame.EXIT_ON_CLOSE);
System.out.println("Command successfully executed");
```

The `showEmployees()` method includes a `catch` block to intercept any errors that may occur and display an appropriate message to the user:

```
catch(Exception err)
{
    System.out.println("An error has occurred.");
    System.out.println("See full details below.");
    err.printStackTrace();
}
```

The result of calling the `showEmployees()` method is shown in below figure:



empno	ename	job	mgr	hiredate	sal	comm	deptno
7369	SMITH	CLERK	7902	1980-...	800.00		20
7499	ALLEN	SALE...	7698	1981-...	1600.00	300.00	30
7521	WARD	SALE...	7698	1981-...	1250.00	500.00	30
7566	JONES	MANA...	7839	1981-...	2975.00		20
7654	MARTIN	SALE...	7698	1981-...	1250.00	1400.00	30
7698	BLAKE	MANA...	7839	1981-...	2850.00		30
7782	CLARK	MANA...	7839	1981-...	2450.00		10
7788	SCOTT	ANAL...	7566	1987-...	3000.00		20
7839	KING	PRESI...		1981-...	5000.00		10
7844	TURN...	SALE...	7698	1981-...	1500.00	0.00	30
7876	ADAMS	CLERK	7788	1987-...	1100.00		20
7900	JAMES	CLERK	7698	1981-...	950.00		30
7902	FORD	ANAL...	7566	1981-...	3000.00		20
7934	MILLER	CLERK	7782	1982-...	1300.00		10

Fig. 1: *The showEmployees Window*

Advanced JDBC Connector Functionality

The previous example created a graphical user interface that displayed a result set in a `JTable`. Now we will switch gears and show you some of the more advanced features of the Advanced Server JDBC Connector.

To avoid unnecessary clutter, the rest of the code samples in this document will use the console to interact with the user instead of creating a graphical use interface.

8.1 Reducing Client-side Resource Requirements

The Advanced Server JDBC driver retrieves the results of a SQL query as a `ResultSet` object. If a query returns a large number of rows, using a batched `ResultSet` will:

- Reduce the amount of time it takes to retrieve the first row.
- Save time by retrieving only the rows that you need.
- Reduce the memory requirement of the client.

When you reduce the fetch size of a `ResultSet` object, the driver doesn't copy the entire `ResultSet` across the network (from the server to the client). Instead, the driver requests a small number of rows at a time; as the client application moves through the result set, the driver fetches the next batch of rows from the server.

Batched result sets cannot be used in all situations. Not adhering to the following restrictions will make the driver silently fall back to fetching the whole `ResultSet` at once:

- The client application must disable `autocommit`.
- The `Statement` object must be created with a `ResultSet` type of `TYPE_FORWARD_ONLY` type (which is the default). `TYPE_FORWARD_ONLY` result sets can only step forward through the `ResultSet`.
- The query must consist of a single SQL statement.

8.1.1 Modifying the Batch Size of a Statement Object

Limiting the batch size of a `ResultSet` object can speed the retrieval of data and reduce the resources needed by a client-side application. Listing 1.5 creates a `Statement` object with a batch size limited to five rows:

```
// Make sure autocommit is off
conn.setAutoCommit(false);

Statement stmt = conn.createStatement();
// Set the Batch Size.
stmt.setFetchSize(5);

ResultSet rs = stmt.executeQuery("SELECT * FROM emp");
while (rs.next())
    System.out.println("a row was returned.");

rs.close();
stmt.close();
```

The call to `conn.setAutoCommit(false)` ensures that the server won't close the `ResultSet` before you have a chance to retrieve the first row. After preparing the `Connection`, you can construct a `Statement` object:

```
Statement stmt = db.createStatement();
```

The following code sets the batch size to five (rows) before executing the query:

```
stmt.setFetchSize(5);

ResultSet rs = stmt.executeQuery("SELECT * FROM emp");
```

For each row in the `ResultSet` object, the call to `println()` prints a row was returned.

```
System.out.println("a row was returned.");
```

Remember, while the `ResultSet` contains all of the rows in the table, they are only fetched from the server five rows at a time. From the client's point of view, the only difference between a batched result set and an unbatched result set is that a batched result may return the first row in less time.

Next, we will look at another feature (the `PreparedStatement`) that you can use to increase the performance of certain JDBC applications.

8.2 Using PreparedStatement to Send SQL Commands

Many applications execute the same SQL statement over and over again, changing one or more of the data values in the statement between each iteration. If you use a `Statement` object to repeatedly execute a SQL statement, the server must parse, plan, and optimize the statement every time. JDBC offers another `Statement` derivative, the `PreparedStatement` to reduce the amount of work required in such a scenario.

Listing 1.6 demonstrates invoking a `PreparedStatement` that accepts an employee ID and employee name and inserts that employee information in the `emp` table:

Listing 1.6

```
public void AddEmployee(Connection con)
{
    try
    {
        Console c = System.console();
        String command = "INSERT INTO emp(empno,ename) VALUES(?,?)";
        PreparedStatement stmt = con.prepareStatement(command);
        stmt.setObject(1,new Integer(c.readLine("ID:")));
        stmt.setObject(2,c.readLine("Name:"));
        stmt.execute();

        System.out.println("The procedure successfully executed.");
    }
    catch(Exception err)
    {
        System.out.println("An error has occurred.");
        System.out.println("See full details below.");
        err.printStackTrace();
    }
}
```

Instead of hard-coding data values in the SQL statement, you insert placeholders to represent the values that will change with each iteration. Listing 1.6 shows an `INSERT` statement that includes two placeholders (each represented by a question mark):

```
String command = "INSERT INTO emp(empno,ename) VALUES(?,?)";
```

With the parameterized SQL statement in hand, the `AddEmployee()` method can ask the `Connection` object to prepare that statement and return a `PreparedStatement` object:

```
PreparedStatement stmt = con.prepareStatement(command);
```

At this point, the `PreparedStatement` has parsed and planned the `INSERT` statement, but it does not know what values to add to the table. Before executing the `PreparedStatement`, you

must supply a value for each placeholder by calling a `setter` method. `setObject()` expects two arguments:

- A parameter number; parameter number one corresponds to the first question mark, parameter number two corresponds to the second question mark, etc.
- The value to substitute for the placeholder.

The `AddEmployee()` method prompts the user for an employee ID and name and calls `setObject()` with the values supplied by the user:

```
stmt.setObject(1, new Integer(c.readLine("ID:")));  
stmt.setObject(2, c.readLine("Name:"));
```

And then asks the `PreparedStatement` object to execute the statement:

```
stmt.execute();
```

If the SQL statement executes as expected, `AddEmployee()` displays a message that confirms the execution. If the server encounters an exception, the error handling code displays an error message.

8.3 Executing Stored Procedures

A stored procedure is a module that is written in EDB's SPL and stored in the database. A stored procedure may define input parameters to supply data to the procedure and output parameters to return data from the procedure. Stored procedures execute within the server and consist of database access commands (SQL), control statements, and data structures that manipulate the data obtained from the database.

Stored procedures are especially useful when extensive data manipulation is required before storing data from the client. It is also efficient to use a stored procedure to manipulate data in a batch program.

8.3.1 Invoking Stored Procedures

The `CallableStatement` class provides a way for a Java program to call stored procedures. A `CallableStatement` object can have a variable number of parameters used for input (IN parameters), output (OUT parameters), or both (IN OUT parameters).

The syntax for invoking a stored procedure in JDBC is shown below. Note that the square brackets indicate optional parameters; they are not part of the command syntax.

```
{call procedure_name([?, ?, ...])}
```

The syntax to invoke a procedure that returns a result parameter is:

```
{? = call procedure_name([?, ?, ...])}
```

Each question mark serves as a placeholder for a parameter. The stored procedure determines if the placeholders represent IN, OUT, or IN OUT parameters and the Java code must match. We will show you how to supply values for IN (or IN OUT) parameters and how to retrieve values returned in OUT (or IN OUT) parameters in a moment.

Executing a Simple Stored Procedure

Listing 1.7-a shows a stored procedure that increases the salary of each employee by 10%. `increaseSalary` expects no arguments from the caller and does not return any information:

```
CREATE OR REPLACE PROCEDURE increaseSalary
IS
BEGIN
    UPDATE emp SET sal = sal * 1.10;
END;
```

Listing 1.7-b demonstrates how to invoke the `increaseSalary` procedure:

```
public void SimpleCallSample(Connection con)
{
    try
    {
        CallableStatement stmt = con.prepareCall("{call increaseSalary()}
→");
        stmt.execute();
        System.out.println("Stored Procedure executed successfully");
    }
    catch(Exception err)
    {
        System.out.println("An error has occurred.");
        System.out.println("See full details below.");
        err.printStackTrace();
    }
}
```

To invoke a stored procedure from a Java application, use a `CallableStatement` object. The `CallableStatement` class is derived from the `Statement` class and, like the `Statement` class, you obtain a `CallableStatement` object by asking a `Connection` object to create one for you. To create a `CallableStatement` from a `Connection`, use the `prepareCall()` method:

```
CallableStatement stmt = con.prepareCall("{call increaseSalary()}");
```

As the name implies, the `prepareCall()` method prepares the statement, but does not execute it. As you will see in the next example, an application typically binds parameter values between the call to `prepareCall()` and the call to `execute()`. To invoke the stored procedure on the server, call the `execute()` method.

```
stmt.execute();
```

This stored procedure (`increaseSalary`) did not expect any `IN` parameters and did not return any information to the caller (using `OUT` parameters) so invoking the procedure is simply a matter

of creating a `CallableStatement` object and then calling that object's `execute()` method. The next section demonstrates how to invoke a stored procedure that requires data (IN parameters) from the caller.

Executing Stored Procedures with IN parameters

The code in the next example first creates and then invokes a stored procedure named `empInsert`; `empInsert` requires IN parameters that contain employee information: `empno`, `ename`, `job`, `sal`, `comm`, `deptno`, and `mgr`. `empInsert` then inserts that information into the `emp` table.

Listing 1.8-a creates the stored procedure in the Advanced Server database:

```
CREATE OR REPLACE PROCEDURE empInsert (
    pEname   IN VARCHAR,
    pJob     IN VARCHAR,
    pSal     IN FLOAT4,
    pComm    IN FLOAT4,
    pDeptno  IN INTEGER,
    pMgr     IN INTEGER
)
AS
DECLARE
    CURSOR getMax IS SELECT MAX(empno) FROM emp;
    max_empno INTEGER := 10;
BEGIN
    OPEN getMax;
    FETCH getMax INTO max_empno;
    INSERT INTO emp(empno, ename, job, sal, comm, deptno, mgr)
        VALUES(max_empno+1, pEname, pJob, pSal, pComm, pDeptno, pMgr);
    CLOSE getMax;
END;
```

Listing 1.8-b demonstrates how to invoke the stored procedure from Java:

```
public void CallExample2(Connection con)
{
    try
    {
        Console c = System.console();
        String commandText = "{call empInsert(?, ?, ?, ?, ?, ?)}";
        CallableStatement stmt = con.prepareCall(commandText);
        stmt.setObject(1, new String(c.readLine("Employee Name :")));
        stmt.setObject(2, new String(c.readLine("Job :")));
        stmt.setObject(3, new Float(c.readLine("Salary :")));
        stmt.setObject(4, new Float(c.readLine("Commission :")));
        stmt.setObject(5, new Integer(c.readLine("Department No :")));
        stmt.setObject(6, new Integer(c.readLine("Manager")));
        stmt.execute();
    }
    catch(Exception err)
    {
```

(continues on next page)

(continued from previous page)

```
System.out.println("An error has occurred.");
System.out.println("See full details below.");
err.printStackTrace();
}
}
```

Each placeholder (?) in the command (commandText) represents a point in the command that is later replaced with data:

```
String commandText = "{call EMP_INSERT(?,?,?,?,?,?)}";
CallableStatement stmt = con.prepareCall(commandText);
```

The setObject() method binds a value to an IN or IN OUT placeholder. Each call to setObject() specifies a parameter number and a value to bind to that parameter:

```
stmt.setObject(1, new String(c.readLine("Employee Name :")));
stmt.setObject(2, new String(c.readLine("Job :")));
stmt.setObject(3, new Float(c.readLine("Salary :")));
stmt.setObject(4, new Float(c.readLine("Commission :")));
stmt.setObject(5, new Integer(c.readLine("Department No :")));
stmt.setObject(6, new Integer(c.readLine("Manager")));
```

After supplying a value for each placeholder, this method executes the statement by calling the execute() method.

Executing Stored Procedures with OUT parameters

The next example creates and invokes an SPL stored procedure called `deptSelect`. This procedure requires one IN parameter (department number) and returns two OUT parameters (the department name and location) corresponding to the department number. The code in Listing 1.9-a creates the `deptSelect` procedure:

```
CREATE OR REPLACE PROCEDURE deptSelect
(
  p_deptno IN  INTEGER,
  p_dname  OUT VARCHAR,
  p_loc    OUT VARCHAR
)
AS
DECLARE
  CURSOR deptCursor IS SELECT dname, loc FROM dept WHERE deptno=p_
→deptno;
BEGIN
  OPEN deptCursor;
  FETCH deptCursor INTO p_dname, p_loc;

  CLOSE deptCursor;
END;
```

Listing 1.9-b shows the Java code required to invoke the `deptSelect` stored procedure:

```
public void GetDeptInfo(Connection con)
{
  try
  {
    Console c = System.console();
    String commandText = "{call deptSelect(?,?,?)}";
    CallableStatement stmt = con.prepareCall(commandText);
    stmt.setObject(1, new Integer(c.readLine("Dept No :")));
    stmt.registerOutParameter(2, Types.VARCHAR);
    stmt.registerOutParameter(3, Types.VARCHAR);
    stmt.execute();
    System.out.println("Dept Name: " + stmt.getString(2));
    System.out.println("Location : " + stmt.getString(3));
  }
  catch(Exception err)
  {
    System.out.println("An error has occurred.");
    System.out.println("See full details below.");
    err.printStackTrace();
  }
}
```

Each placeholder (?) in the command (commandText) represents a point in the command that is later replaced with data:

```
String commandText = "{call deptSelect(?,?,?)}";
CallableStatement stmt = con.prepareCall(commandText);
```

The setObject() method binds a value to an IN or ``IN OUT placeholder. When calling setObject() you must identify a placeholder (by its ordinal number) and provide a value to substitute in place of that placeholder:

```
stmt.setObject(1, new Integer(c.readLine("Dept No :")));
```

The JDBC type of each OUT parameter must be registered before the CallableStatement object can be executed. Registering the JDBC type is done with the registerOutParameter() method.

```
stmt.registerOutParameter(2, Types.VARCHAR);
stmt.registerOutParameter(3, Types.VARCHAR);
```

After executing the statement, the CallableStatement's getter method retrieves the OUT parameter values: to retrieve a VARCHAR value, use the getString() getter method.

```
stmt.execute();
System.out.println("Dept Name: " + stmt.getString(2));
System.out.println("Location : " + stmt.getString(3));
```

In the current example GetDeptInfo() registers two OUT parameters and (after executing the stored procedure) retrieves the values returned in the OUT parameters. Since both OUT parameters are defined as VARCHAR values, GetDeptInfo() uses the getString() method to retrieve the OUT parameters.

Executing Stored Procedures with IN OUT parameters

The code in the next example creates and invokes a stored procedure named `empQuery` defined with one IN parameter (`p_deptno`), two IN OUT parameters (`p_empno` and `p_ename`) and three OUT parameters (`p_job`, `p_hiredate` and `p_sal`). `empQuery` then returns information about the employee in the two IN OUT parameters and three OUT parameters.

Listing 1.10-a creates a stored procedure named `empQuery`:

```
CREATE OR REPLACE PROCEDURE empQuery
(
    p_deptno      IN      NUMBER,
    p_empno       IN OUT  NUMBER,
    p_ename       IN OUT  VARCHAR2,
    p_job         OUT    VARCHAR2,
    p_hiredate    OUT    DATE,
    p_sal         OUT    NUMBER
)
IS
BEGIN
    SELECT empno, ename, job, hiredate, sal
       INTO p_empno, p_ename, p_job, p_hiredate, p_sal
       FROM emp
       WHERE deptno = p_deptno
              AND (empno = p_empno
                  OR ename = UPPER(p_ename));
END;
```

Listing 1.10-b demonstrates invoking the `empQuery` procedure, providing values for the IN parameters, and handling the OUT and IN OUT parameters:

```
public void CallSample4(Connection con)
{
    try
    {
        Console c = System.console();
        String commandText = "{call empQuery(?, ?, ?, ?, ?, ?)}";
        CallableStatement stmt = con.prepareCall(commandText);
        stmt.setInt(1, new Integer(c.readLine("Department No:")));
        stmt.setInt(2, new Integer(c.readLine("Employee No:")));
        stmt.setString(3, new String(c.readLine("Employee Name:")));
        stmt.registerOutParameter(2, Types.INTEGER);
        stmt.registerOutParameter(3, Types.VARCHAR);
        stmt.registerOutParameter(4, Types.VARCHAR);
        stmt.registerOutParameter(5, Types.TIMESTAMP);
        stmt.registerOutParameter(6, Types.NUMERIC);
        stmt.execute();
    }
}
```

(continues on next page)

(continued from previous page)

```

System.out.println("Employee No: " + stmt.getInt(2));
System.out.println("Employee Name: " + stmt.getString(3));
System.out.println("Job : " + stmt.getString(4));
System.out.println("Hiredate : " + stmt.getTimestamp(5));
System.out.println("Salary : " + stmt.getBigDecimal(6));
}
catch(Exception err)
{
    System.out.println("An error has occurred.");
    System.out.println("See full details below.");
    err.printStackTrace();
}
}

```

Each placeholder (?) in the command (commandText) represents a point in the command that is later replaced with data:

```

String commandText = "{call empQuery(?,?,?,?,?,?)}";
CallableStatement stmt = con.prepareCall(commandText);

```

The `setInt()` method is a type-specific setter method that binds an Integer value to an IN or IN OUT placeholder. The call to `setInt()` specifies a parameter number and provides a value to substitute in place of that placeholder:

```

stmt.setInt(1, new Integer(c.readLine("Department No:")));
stmt.setInt(2, new Integer(c.readLine("Employee No:")));

```

The `setString()` method binds a String value to an IN or IN OUT placeholder:

```

stmt.setString(3, new String(c.readLine("Employee Name:")));

```

Before executing the `CallableStatement`, you must register the JDBC type of each OUT parameter by calling the `registerOutParameter()` method.

```

stmt.registerOutParameter(2, Types.INTEGER);
stmt.registerOutParameter(3, Types.VARCHAR);
stmt.registerOutParameter(4, Types.VARCHAR);
stmt.registerOutParameter(5, Types.TIMESTAMP);
stmt.registerOutParameter(6, Types.NUMERIC);

```

Remember, before calling a procedure with an IN parameter, you must assign a value to that parameter with a setter method. Before calling a procedure with an OUT parameter, you register the type of that parameter; then you can retrieve the value returned by calling a getter method. When calling a procedure that defines an IN OUT parameter, you must perform all three actions:

- Assign a value to the parameter.

- Register the type of the parameter.
- Retrieve the value returned with a getter method.

8.4 Using REF CURSORS with Java

A REF CURSOR is a cursor variable that contains a pointer to a query result set returned by an OPEN statement. Unlike a static cursor, a REF CURSOR is not tied to a particular query. You may open the same REF CURSOR variable any number of times with the OPEN statement containing different queries; each time, a new result set is created for that query and made available via the cursor variable. A REF CURSOR can also pass a result set from one procedure to another.

Advanced Server supports the declaration of both strongly-typed and weakly-typed REF CURSORS. A strongly-typed cursor must declare the shape (the type of each column) of the expected result set. You can only use a strongly-typed cursor with a query that returns the declared columns; opening the cursor with a query that returns a result set with a different shape will cause the server to throw an exception. On the other hand, a weakly-typed cursor can work with a result set of any shape.

To declare a strongly-typed REF CURSOR:

```
TYPE <cursor_type_name> IS REF CURSOR RETURN <return_type>;
```

To declare a weakly-typed REF_CURSOR:

```
name SYS_REFCURSOR;

.. raw:: latex

    \newpage
```

8.4.1 Using a REF CURSOR to retrieve a ResultSet

The stored procedure shown in Listing 1.11-a (getEmpNames) builds two REF CURSORS on the server; the first REF CURSOR contains a list of commissioned employees in the emp table, while the second REF CURSOR contains a list of salaried employees in the emp table:

Listing 1.11-a

```
CREATE OR REPLACE PROCEDURE getEmpNames
(
  commissioned IN OUT SYS_REFCURSOR,
  salaried IN OUT SYS_REFCURSOR
)
IS
BEGIN
  OPEN commissioned FOR SELECT ename FROM emp WHERE comm is NOT NULL;
  OPEN salaried FOR SELECT ename FROM emp WHERE comm is NULL;
END;
```

The `RefCursorSample()` method (see Listing 1.11-b) invokes the `getEmpName()` stored procedure and displays the names returned in each of the two REF CURSOR variables:

Listing 1.11-b

```
public void RefCursorSample(Connection con)
{
    try
    {
        con.setAutoCommit(false);
        String commandText = "{call getEmpNames(?,?)}";
        CallableStatement stmt = con.prepareCall(commandText);
        stmt.registerOutParameter(1, Types.REF);
        stmt.registerOutParameter(2, Types.REF);

        stmt.execute();
        ResultSet commissioned = (ResultSet)stmt.getObject(1);
        System.out.println("Commissioned employees:");
        while(commissioned.next())
        {
            System.out.println(commissioned.getString(1));
        }

        ResultSet salaried = (ResultSet)stmt.getObject(2);
        System.out.println("Salaried employees:");
        while(salaried.next())
        {
            System.out.println(salaried.getString(1));
        }
    }
    catch(Exception err)
    {
        System.out.println("An error has occurred.");
        System.out.println("See full details below.");
        err.printStackTrace();
    }
}
```

A `CallableStatement` prepares each REF CURSOR (commissioned and salaried). Each cursor is returned as an IN OUT parameter of the stored procedure, `getEmpNames()`:

```
String commandText = "{call getEmpNames(?,?)}";
CallableStatement stmt = con.prepareCall(commandText);
```

The call to `registerOutParameter()` registers the parameter type (`Types.REF`) of the first REF CURSOR (commissioned):


```
stmt.registerOutParameter(1, Types.REF);
```

Another call to `registerOutParameter()` registers the second parameter type (`Types.REF`) of the second REF CURSOR (`salaried`):

```
stmt.registerOutParameter(2, Types.REF);
```

A call to `stmt.execute()` executes the statement:

```
stmt.execute();
```

The `getObject()` method retrieves the values from the first parameter and casts the result to a `ResultSet`. Then, `RefCursorSample` iterates through the cursor and prints the name of each commissioned employee:

```
ResultSet commissioned = (ResultSet)stmt.getObject(1);
while(committed.next())
{
    System.out.println(committed.getString(1));
}
```

The same getter method retrieves the `ResultSet` from the second parameter and `RefCursorExample` iterates through that cursor, printing the name of each salaried employee:

```
ResultSet salaried = (ResultSet)stmt.getObject(2);
while(salaried.next())
{
    System.out.println(salaried.getString(1));
}
```

8.5 Using BYTEA Data with Java

The BYTEA data type stores a binary string in a sequence of bytes; digital images and sound files are often stored as binary data. Advanced Server can store and retrieve binary data via the BYTEA data type.

The following Java sample stores BYTEA data in an Advanced Server database and then demonstrates how to retrieve that data. The example requires a bit of setup; Listings 1.12-a, 1.12-b, and 1.12-c create the server-side environment for the Java example.

Listing 1.12-a creates a table (`emp_detail`) that stores BYTEA data. `emp_detail` contains two columns: the first column stores an employee's ID number (type `INT`) and serves as the primary key for the table; the second column stores a photograph of the employee in BYTEA format:

```
CREATE TABLE emp_detail
(
  empno INT4 PRIMARY KEY,
  pic   BYTEA
);
```

Listing 1.12-b creates a procedure (`ADD_PIC`) that inserts a row into the `emp_detail` table:

```
CREATE OR REPLACE PROCEDURE ADD_PIC(p_empno IN int4, p_photo IN bytea)
AS
BEGIN
  INSERT INTO emp_detail VALUES(p_empno, p_photo);
END;
```

And finally, Listing 1.12-c creates a function (`GET_PIC`) that returns the photograph for a given employee:

```
CREATE OR REPLACE FUNCTION GET_PIC(p_empno IN int4) RETURN BYTEA IS
DECLARE
  photo BYTEA;
BEGIN
  SELECT pic INTO photo from EMP_DETAIL WHERE empno = p_empno;
  RETURN photo;
END;
```

8.5.1 Inserting BYTEA Data into an Advanced Server Database

Listing 1.13 shows a Java method that invokes the `ADD_PIC` procedure (see Listing 1.12-b) to copy a photograph from the client file system to the `emp_detail` table on the server:

```
public void InsertPic(Connection con)
{
    try
    {
        Console c = System.console();
        int empno = Integer.parseInt(c.readLine("Employee No :"));
        String fileName = c.readLine("Image filename :");
        File f = new File(fileName);

        if(!f.exists())
        {
            System.out.println("Image file not found. Terminating...");
            return;
        }

        CallableStatement stmt = con.prepareCall("{call ADD_PIC(?, ?)}");
        stmt.setInt(1, empno);
        stmt.setBinaryStream(2, new FileInputStream(f), (int)f.length());
        stmt.execute();
        System.out.println("Added image for Employee "+empno);
    }
    catch(Exception err)
    {
        System.out.println("An error has occurred.");
        System.out.println("See full details below.");
        err.printStackTrace();
    }
}
```

`InsertPic()` prompts the user for an employee number and the name of an image file:

```
int empno = Integer.parseInt(c.readLine("Employee No :"));
String fileName = c.readLine("Image filename :");
```

If the requested file does not exist, `InsertPic()` displays an error message and terminates:

```
File f = new File(fileName);

if(!f.exists())
{
    System.out.println("Image file not found. Terminating...");
    return;
}
```

(continues on next page)

(continued from previous page)

```
}
```

Next, `InsertPic()` prepares a `CallableStatement` object (`stmt`) that calls the `ADD_PIC` procedure. The first placeholder (?) represents the first parameter expected by `ADD_PIC` (`p_empno`); the second placeholder represents the second parameter (`p_photo`). To provide actual values for those placeholders, `InsertPic()` calls two setter methods. Since the first parameter is of type `INTEGER`, `InsertPic()` calls the `setInt()` method to provide a value for `p_empno`. The second parameter is of type `BYTEA`, so `InsertPic()` uses a binary setter method; in this case, the method is `setBinaryStream()`:

```
CallableStatement stmt = con.prepareCall("{call ADD_PIC(?, ?)}");
stmt.setInt(1, empno);
stmt.setBinaryStream(2, new FileInputStream(f), f.length());
```

Now that the placeholders are bound to actual values, `InsertPic()` executes the `CallableStatement`:

```
stmt.execute();
```

If all goes well, `InsertPic()` displays a message verifying that the image has been added to the table. If an error occurs, the `catch` block displays a message to the user:

```
System.out.println("Added image for Employee \""+empno);
catch(Exception err)
{
    System.out.println("An error has occurred.");
    System.out.println("See full details below.");
    err.printStackTrace();
}
```

8.5.2 Retrieving BYTEA Data from an Advanced Server Database

Now that you know how to insert BYTEA data from a Java application, Listing 1.14 demonstrates how to retrieve BYTEA data from the server:

```
public static void GetPic(Connection con)
{
    try
    {
        Console c = System.console();
        int empno = Integer.parseInt(c.readLine("Employee No :"));
        CallableStatement stmt = con.prepareCall("{?=call GET_PIC(?)}");
        stmt.setInt(2, empno);
        stmt.registerOutParameter(1, Types.BINARY);
        stmt.execute();
        byte[] b = stmt.getBytes(1);

        String fileName = c.readLine("Destination filename :");
        FileOutputStream fos = new FileOutputStream(new File(fileName));
        fos.write(b);
        fos.close();
        System.out.println("File saved at \""+fileName+"\"");
    }
    catch(Exception err)
    {
        System.out.println("An error has occurred.");
        System.out.println("See full details below.");
        err.printStackTrace();
    }
}
```

GetPic() starts by prompting the user for an employee ID number:

```
int empno = Integer.parseInt(c.readLine("Employee No :"));
```

Next, GetPic() prepares a CallableStatement with one IN parameter and one OUT parameter. The first parameter is the OUT parameter that will contain the photograph retrieved from the database. Since the photograph is BYTEA data, GetPic() registers the parameter as a Type.BINARY. The second parameter is the IN parameter that holds the employee number (an INT), so GetPic() uses the setInt() method to provide a value for the second parameter.

```
CallableStatement stmt = con.prepareCall("{?=call GET_PIC(?)}");
stmt.setInt(2, empno);
stmt.registerOutParameter(1, Types.BINARY);
```

Next, GetPic() uses the getBytes getter method to retrieve the BYTEA data from the CallableStatement:

```
stmt.execute();  
byte[] b = stmt.getBytes(1);
```

The program prompts the user for the name of the file where it will store the photograph:

```
String fileName = c.readLine("Destination filename :");
```

The `FileOutputStream` object writes the binary data that contains the photograph to the destination filename:

```
FileOutputStream fos = new FileOutputStream(new File(fileName));  
fos.write(b);  
fos.close();
```

Finally, `GetPic()` displays a message confirming that the file has been saved at the new location:

```
System.out.println("File saved at \""+fileName+"\"");
```

8.6 Using Object Types and Collections with Java

The SQL `CREATE TYPE` command is used to create a user-defined object type, which is stored in the Advanced Server database. The `CREATE TYPE` command is also used to create a collection, commonly referred to as an array, which is also stored in the Advanced Server database.

These user-defined types can then be referenced within SPL procedures, SPL functions, and Java programs.

The basic object type is created with the `CREATE TYPE AS OBJECT` command along with optional usage of the `CREATE TYPE BODY` command.

A nested table type collection is created using the `CREATE TYPE AS TABLE OF` command. A varray type collection is created with the `CREATE TYPE VARRAY` command.

Example usage of an object type and a collection are shown in the following sections.

Listing 1.15 shows a Java method used by both examples to establish the connection to the Advanced Server database.

```
public static Connection getEDBConnection() throws
    ClassNotFoundException, SQLException {
    String url = "jdbc:edb://localhost:5444/test";
    String user = "enterprisedb";
    String password = "edb";
    Class.forName("com.edb.Driver");
    Connection conn = DriverManager.getConnection(url, user, password);
    return conn;
}
```

8.6.1 Using an Object Type

Create the object types in the Advanced Server database. Object type `addr_object_type` defines the attributes of an address:

```
CREATE OR REPLACE TYPE addr_object_type AS OBJECT
(
    street          VARCHAR2(30),
    city            VARCHAR2(20),
    state           CHAR(2),
    zip             NUMBER(5)
);
```

Object type `emp_obj_typ` defines the attributes of an employee. Note that one of these attributes is object type `ADDR_OBJECT_TYPE` as previously described. The object type body contains a method that displays the employee information:

```
CREATE OR REPLACE TYPE emp_obj_typ AS OBJECT
(
    empno           NUMBER(4),
    ename           VARCHAR2(20),
    addr            ADDR_OBJECT_TYPE,
    MEMBER PROCEDURE display_emp(SELF IN OUT emp_obj_typ)
);

CREATE OR REPLACE TYPE BODY emp_obj_typ AS
MEMBER PROCEDURE display_emp (SELF IN OUT emp_obj_typ)
IS
BEGIN
    DBMS_OUTPUT.PUT_LINE('Employee No   : ' || SELF.empno);
    DBMS_OUTPUT.PUT_LINE('Name         : ' || SELF.ename);
    DBMS_OUTPUT.PUT_LINE('Street        : ' || SELF.addr.street);
    DBMS_OUTPUT.PUT_LINE('City/State/Zip: ' || SELF.addr.city || ', ' ||
→ ||
    SELF.addr.state || ' ' || LPAD(SELF.addr.zip,5,'0'));
END;
END;
```

Listing 1.16 is a Java method that includes these user-defined object types:

```
public static void testUDT() throws SQLException {
    Connection conn = null;
    try {
        conn = getEDBConnection();
        String commandText = "{call emp_obj_typ.display_emp(?)}";
        CallableStatement stmt = conn.prepareCall(commandText);
```

(continues on next page)

(continued from previous page)

```

// initialize emp_obj_typ structure
// create addr_object_type structure
Struct address = conn.createStruct("addr_object_type",
    new Object[]{"123 MAIN STREET", "EDISON", "NJ", 8817});
Struct emp      = conn.createStruct("emp_obj_typ",
    new Object[]{9001, "JONES", address});

// set emp_obj_typ type param
stmt.registerOutParameter(1, Types.STRUCT, "emp_obj_typ");
stmt.setObject(1, emp);
stmt.execute();

// extract emp_obj_typ object
emp = (Struct)stmt.getObject(1);
Object[] attrEmp = emp.getAttributes();
System.out.println("empno: " + attrEmp[0]);
System.out.println("ename: " + attrEmp[1]);

// extract addr_object_type attributes
address = (Struct) attrEmp[2];
Object[] attrAddress = address.getAttributes();
System.out.println("street: " + attrAddress[0]);
System.out.println("city: " + attrAddress[1]);
System.out.println("state: " + attrAddress[2]);
System.out.println("zip: " + attrAddress[3]);
} catch (ClassNotFoundException cnfe) {
    System.err.println("Error: " + cnfe.getMessage());
} finally {
    if (conn != null) {
        conn.close();
    }
}
}
}

```

A CallableStatement object is prepared based on the `display_emp()` method of the `emp_obj_typ` object type:

```
String commandText = "{call emp_obj_typ.display_emp(?)}";
CallableStatement stmt = conn.prepareCall(commandText);
```

`createStruct()` initializes and creates instances of object types `addr_object_type` and `emp_obj_typ` named `address` and `emp`, respectively:

```
Struct address = conn.createStruct("addr_object_type",
    new Object[]{"123 MAIN STREET", "EDISON", "NJ", 8817});
```

(continues on next page)

(continued from previous page)

```
Struct emp      = conn.createStruct("emp_obj_typ",
    new Object[]{9001,"JONES", address});
```

The call to `registerOutParameter()` registers the parameter type (`Types.STRUCT`) of `emp_obj_typ`:

```
stmt.registerOutParameter(1, Types.STRUCT, "emp_obj_typ");
```

The `setObject()` method binds the object instance `emp` to the IN OUT placeholder.

```
stmt.setObject(1, emp);
```

A call to `stmt.execute()` executes the call to the `display_emp()` method:

```
stmt.execute();
```

`getObject()` retrieves the `emp_obj_typ` object type. The attributes of the `emp` and `address` object instances are then retrieved and displayed:

```
emp = (Struct)stmt.getObject(1);
Object[] attrEmp = emp.getAttributes();
System.out.println("empno: " + attrEmp[0]);
System.out.println("ename: " + attrEmp[1]);

address = (Struct) attrEmp[2];
Object[] attrAddress = address.getAttributes();
System.out.println("street: " + attrAddress[0]);
System.out.println("city: " + attrAddress[1]);
System.out.println("state: " + attrAddress[2]);
System.out.println("zip: " + attrAddress[3]);
```

8.6.2 Using a Collection

Create collection types `NUMBER_ARRAY` and `CHAR_ARRAY` in the Advanced Server database:

```
CREATE OR REPLACE TYPE NUMBER_ARRAY AS TABLE OF NUMBER;
CREATE OR REPLACE TYPE CHAR_ARRAY AS TABLE OF VARCHAR(50);
```

Listing 1.17-a is an SPL function that uses collection types `NUMBER_ARRAY` and `CHAR_ARRAY` as IN parameters and `CHAR_ARRAY` as the OUT parameter.

The function concatenates the employee ID from the `NUMBER_ARRAY` IN parameter with the employee name in the corresponding row from the `CHAR_ARRAY` IN parameter. The resulting concatenated entries are returned in the `CHAR_ARRAY` OUT parameter.

```
CREATE OR REPLACE FUNCTION concatEmpIdName
(
    arrEmpIds      NUMBER_ARRAY,
    arrEmpNames    CHAR_ARRAY
) RETURN CHAR_ARRAY
AS
DECLARE
    i              INTEGER := 0;
    arrEmpIdNames CHAR_ARRAY;
BEGIN
    arrEmpIdNames := CHAR_ARRAY(NULL, NULL);
    FOR i IN arrEmpIds.FIRST..arrEmpIds.LAST LOOP
        arrEmpIdNames(i) := arrEmpIds(i) || ' ' || arrEmpNames(i);
    END LOOP;
    RETURN arrEmpIdNames;
END;
```

Listing 1.17-b is a Java method that calls the Listing 1.17-a function, passing and retrieving the collection types:

```
public static void testTableOfAsInOutParams() throws SQLException {
    Connection conn = null;
    try {
        conn = getEDBConnection();
        String commandText = "{? = call concatEmpIdName(?, ?)}";
        CallableStatement stmt = conn.prepareCall(commandText);

        // create collections to specify employee id and name values
        Array empIdArray = conn.createArrayOf("integer",
            new Integer[]{7900, 7902});
        Array empNameArray = conn.createArrayOf("varchar",
            new String[]{"JAMES", "FORD"});
```

(continues on next page)

(continued from previous page)

```

// set TABLE OF VARCHAR as OUT param
stmt.registerOutParameter(1, Types.ARRAY);

// set TABLE OF INTEGER as IN param
stmt.setObject(2, empIdArray, Types.OTHER);

// set TABLE OF VARCHAR as IN param
stmt.setObject(3, empNameArray, Types.OTHER);
stmt.execute();
java.sql.Array empIdNameArray = stmt.getArray(1);
String[] emps = (String[]) empIdNameArray.getArray();

System.out.println("items length: " + emps.length);
System.out.println("items[0]: " + emps[0].toString());
System.out.println("items[1]: " + emps[1].toString());

} catch (ClassNotFoundException cnfe) {
    System.err.println("Error: " + cnfe.getMessage());
} finally {
    if (conn != null) {
        conn.close();
    }
}
}
}

```

A CallableStatement object is prepared to invoke the concatEmpIdName() function:

```

String commandText = "{? = call concatEmpIdName(?,?)}";
CallableStatement stmt = conn.prepareCall(commandText);

```

createArrayOf() initializes and creates collections named empIdArray and empNameArray:

```

Array empIdArray = conn.createArrayOf("integer",
    new Integer[]{7900, 7902});
Array empNameArray = conn.createArrayOf("varchar",
    new String[]{"JAMES", "FORD"});

```

The call to registerOutParameter() registers the parameter type (Types.ARRAY) of the OUT parameter:

```

stmt.registerOutParameter(1, Types.ARRAY);

```

The setObject() method binds the collections empIdArray and empNameArray to the IN placeholders:

```
stmt.setObject(2, empIdArray, Types.OTHER);  
stmt.setObject(3, empNameArray, Types.OTHER);
```

A call to `stmt.execute()` invokes the `concatEmpIdName()` function:

```
stmt.execute();
```

`getArray()` retrieves the collection returned by the function. The first two rows consisting of the concatenated employee IDs and names are displayed:

```
java.sql.Array empIdNameArray = stmt.getArray(1);  
String[] emps = (String[]) empIdNameArray.getArray();  
System.out.println("items length: " + emps.length);  
System.out.println("items[0]: " + emps[0].toString());  
System.out.println("items[1]: " + emps[1].toString());
```

8.7 Asynchronous Notification Handling with NoticeListener

The Advanced Server JDBC Connector provides asynchronous notification handling functionality. A notification is a message generated by the server when an SPL (or PL/pgSQL) program executes a `RAISE NOTICE` statement. Each notification is sent from the server to the client application. To intercept a notification in a JDBC client, an application must create a `NoticeListener` object (or, more typically, an object derived from `NoticeListener`).

It is important to understand that a notification is sent to the client as a result of executing an SPL (or PL/pgSQL) program. To generate a notification, you must execute an SQL statement that invokes a stored procedure, function, or trigger: the notification is delivered to the client as the SQL statement executes. Notifications work with any type of statement object; `CallableStatement` objects, `PreparedStatement` objects, or simple `Statement` objects. A JDBC program intercepts a notification by associating a `NoticeListener` with a `Statement` object. When the `Statement` object executes an SQL statement that raises a notice, JDBC invokes the `noticeReceived()` method in the associated `NoticeListener`.

Listing 1.18-a shows an SPL procedure that loops through the `emp` table and gives each employee a 10% raise. As each employee is processed, `adjustSalary` executes a `RAISE NOTICE` statement (in this case, the message contained in the notification reports progress to the client application):

```
CREATE OR REPLACE PROCEDURE adjustSalary
IS
  v_empno      NUMBER(4);
  v_ename      VARCHAR2(10);
  CURSOR emp_cur IS SELECT empno, ename FROM emp;
BEGIN
  OPEN emp_cur;
  LOOP
    FETCH emp_cur INTO v_empno, v_ename;
    EXIT WHEN emp_cur%NOTFOUND;

    UPDATE emp SET sal = sal * 1.10 WHERE empno = v_empno;
    RAISE NOTICE 'Salary increased for %', v_ename;
  END LOOP;
  CLOSE emp_cur;
END;
```

Listing 1.18-b shows how to create a `NoticeListener` that intercepts notifications in a JDBC application:

```
public void NoticeExample(Connection con)
{
```

(continues on next page)

(continued from previous page)

```

CallableStatement stmt;
try
{
    stmt = con.prepareCall("{call adjustSalary()}");

    MyNoticeListener listener = new MyNoticeListener();
    ((BaseStatement)stmt).addNoticeListener(listener);
    stmt.execute();
    System.out.println("Finished");
}
catch (SQLException e)
{
    System.out.println("An error has occurred.");
    System.out.println("See full details below.");
    e.printStackTrace();
}
}
class MyNoticeListener implements NoticeListener
{
    public MyNoticeListener()
    {
    }

    public void noticeReceived(SQLWarning warn)
    {
        System.out.println("NOTICE: "+ warn.getMessage());
    }
}

```

The `NoticeExample()` method is straightforward; it expects a single argument, a `Connection` object, from the caller:

```
public void NoticeExample(Connection con)
```

`NoticeExample()` begins by preparing a call to the `adjustSalary` procedure shown in example 1.10-a. As you would expect, `con.prepareCall()` returns a `CallableStatement` object. Before executing the `CallableStatement`, you must create an object that implements the `NoticeListener` interface and add that object to the list of `NoticeListeners` associated with the `CallableStatement`:

```

CallableStatement stmt = con.prepareCall("{call adjustSalary()}");
MyNoticeListener listener = new MyNoticeListener();
((BaseStatement)stmt).addNoticeListener(listener);

```

Once the `NoticeListener` is in place, `NoticeExample` method executes the `CallableStatement` (invoking the `adjustSalary` procedure on the server) and displays

a message to the user:

```
stmt.execute();
System.out.println("Finished");
```

Each time the `adjustSalary` procedure executes a `RAISE NOTICE` statement, the server sends the text of the message ("Salary increased for ...") to the Statement (or derivative) object in the client application. JDBC invokes the `noticeReceived()` method (possibly many times) before the call to `stmt.execute()` completes.

```
class MyNoticeListener implements NoticeListener
{
    public MyNoticeListener()
    {
    }

    public void noticeReceived(SQLWarning warn)
    {
        System.out.println("NOTICE: "+ warn.getMessage());
    }
}
```

When JDBC calls the `noticeReceived()` method, it creates an `SQLWarning` object that contains the text of the message generated by the `RAISE NOTICE` statement on the server.

Notice that each Statement object keeps a list of `NoticeListeners`. When the JDBC driver receives a notification from the server, it consults the list maintained by the Statement object. If the list is empty, the notification is saved in the Statement object (you can retrieve the notifications by calling `stmt.getWarnings()` once the call to `execute()` completes). If the list is not empty, the JDBC driver delivers an `SQLWarning` to each listener, in the order in which the listeners were added to the Statement.

9.1 Using SSL

In this section, you will learn about:

- Configuring the server
- Configuring the client
- Testing the SSL JDBC Connection
- Using SSL without Certificate Validation
- Using Certificate Authentication (without a password)

9.1.1 Configuring the Server

For information about configuring PostgreSQL or Advanced Server for SSL, refer to:

<https://www.enterprisedb.com/edb-docs/d/postgresql/reference/manual/12.3/ssl-tcp.html>

Note: Before you access your SSL enabled server from Java, ensure that you can log in to your server via `edb-psql`. The sample output should look similar to the one shown below if you have established a SSL connection:

```
$ ./bin/edb-psql -U enterprisedb -d edb
psql.bin (12.0.1)
SSL connection (protocol: TLSv1.2, cipher: ECDHE-RSA-AES256-GCM-SHA384,
↪ bits: 256, compression: off)
Type "help" for help.

edb=#
```

9.1.2 Configuring the Client

There are a number of connection parameters for configuring the client for SSL. To know more about the SSL Connection parameters and Additional Connection Properties, refer to *Section 5.2*.

In this section, you will learn more about the behavior of `ssl` connection parameter when passed with different values. When you pass the connection parameter `ssl=true` into the driver, the driver validates the SSL certificate and verifies the hostname. On contrary to this behavior, using `libpq` defaults to a non-validating SSL connection.

You can get better control of the SSL connection using the `sslmode` connection parameter. This parameter is the same as the `libpq sslmode` parameter and the existing SSL implements the following `sslmode` connection parameters.

sslmode Connection Parameters

sslmode=require

This mode makes the encryption mandatory and also requires the connection to fail if it can't be encrypted. The server is configured to accept SSL connections for this Host/IP address and that the server recognizes the client certificate.

Note: In this mode, the JDBC driver accepts all server certificates.

sslmode=verify-ca

If `sslmode=verify-ca`, the server is verified by checking the certificate chain up to the root certificate stored on the client.

sslmode=verify-full

If `sslmode=verify-full`, the server host name is verified to make sure it matches the name stored in the server certificate. The SSL connection fails if the server certificate cannot be verified. This mode is recommended in most security-sensitive environments.

In the case where the certificate validation is failing you can try `sslcert=` and `LibPQFactory` will not send the client certificate. If the server is not configured to authenticate using the certificate it should connect.

The location of the client certificate, client key and root certificate can be overridden with the `sslcert`, `sslkey`, and `sslrootcert` settings respectively. These default to `/defaultdir/postgresql.crt`, `/defaultdir/postgresql.pk8`, and `/defaultdir/root.crt` respectively where `defaultdir` is `${user.home}/.postgresql/` in unix systems and `%appdata%/postgresql/` on windows.

In this mode, when establishing a SSL connection the JDBC driver will validate the server's identity preventing "man in the middle" attacks. It does this by checking that the server certificate is

signed by a trusted authority, and that the host you are connecting to, is the same as the hostname in the certificate.

9.1.3 Testing the SSL JDBC Connection

If you are using Java's default mechanism (not `LibPQFactory`) to create the SSL connection, you need to make the server certificate available to Java, which can be achieved by implementing steps given below:

1. Set the following property in the Java program.

```
props.setProperty("ssl", "true");
```

Or, you can set the property in the connection url:

```
String url="jdbc:edb://localhost/test?user=fred&password=secret&ssl=true";
```

2. Convert the server certificate to Java format:

```
$ openssl x509 -in server.crt -out server.crt.der -outform der
```

3. Import this certificate into Java's system truststore.

```
$ keytool -keystore $JAVA_HOME/lib/security/cacerts -alias_
↳ postgresql
-import -file server.crt.der
```

Note: The default password for the cacerts keystore is `changeit`. The alias to postgresql is not important and you may select any name you desire.

4. If you do not have access to the system cacerts truststore, create your own truststore as below:

```
$ keytool -keystore mystore -alias postgresql -import -file server.
↳ crt.der
```

5. Start your Java application and test the program.

```
$ java -Djavax.net.ssl.trustStore=mystore com.mycompany.MyApp
```

For example:

```
$ java -classpath ./usr/edb/jdbc/edb-jdbc18.jar-
Djavax.net.ssl.trustStore=mystore pg_test2 public
```

Note: To troubleshoot connection issues, add `-Djavax.net.debug=ssl` to the java command.

Using SSL without Certificate Validation

By default the combination of `SSL=true` and setting the connection URL parameter `sslfactory=com.edb.ssl.NonValidatingFactory` encrypts the connection but does not validate the SSL certificate. To enforce certificate validation, you must use a Custom `SSLConnectionFactory`.

For more details about writing a Custom `SSLConnectionFactory`, refer to:

<https://jdbc.postgresql.org/documentation/head/ssl-factory.html>

9.1.4 Using Certificate Authentication Without a Password

To use certificate authentication without a password, you must:

1. Convert the client certificate to DER format.

```
$ openssl x509 -in postgresql.crt -out postgresql.crt.der -outform der
```

2. Convert the client key to DER format.

```
$ openssl pkcs8 -topk8 -outform DER -in postgresql.key -out postgresql.key.pk8 -nocrypt
```

3. Copy the client files (postgresql.crt.der, postgresql.key.pk8) and root certificate to the client machine and use the following properties in your java program to test it:

```
String url = "jdbc:edb://snvm001:5444/edbstore";
Properties props = new Properties();
props.setProperty("user", "enterprisedb");
props.setProperty("ssl", "true");
props.setProperty("sslmode", "verify-full");
props.setProperty("sslcert", "postgresql.crt.der");
props.setProperty("sslkey", "postgresql.key.pk8");
props.setProperty("sslrootcert", "root.crt");
```

4. Compile the Java program and test it.

```
$ java -Djavax.net.ssl.trustStore=mystore -classpath
../edb-jdbc18.jar pg_ssl public
```

9.2 Scram Compatibility

The EDB JDBC driver provides SCRAM-SHA-256 support for EDB Postgres Advanced Server versions 10 onwards. For JRE/JDK version 1.8, this support is available from EDB JDBC Connector release 42.2.2.1 onwards; for JRE/JDK version 1.7, this support is available from EDB JDBC Connector release 42.2.5 onwards.

CHAPTER 10

Advanced Server JDBC Connector Logging

The Advanced Server JDBC Connector supports the use of logging to help resolve issues with the JDBC Connector when used in your application. The JDBC Connector uses the logging APIs of `java.util.logging` that was part of Java since JDK 1.4. For information on `java.util.logging`, see [The PostgreSQL JDBC Driver](#).

Note: Previous versions of the Advanced Server JDBC Connector used a custom mechanism to enable logging, which is now replaced by the use of `java.util.logging` in versions moving forward from community version 42.1.4.1. The older mechanism is no longer available.

10.1 Enabling Logging with Connection Properties (static)

You can directly configure logging within the connection properties of the JDBC Connector. The connection properties related to logging are `loggerLevel` and `loggerFile`.

`loggerLevel`

Logger level of the driver. Allowed values are OFF, DEBUG, or TRACE. This option enables the `java.util.logging.Logger` level of the driver to correspond to the following Advanced Server JDBC levels:

<code>loggerLevel</code>	<code>java.util.logging</code>
OFF	OFF
DEBUG	FINE
TRACE	FINEST

`loggerFile`

File name output of the logger. The default is `java.util.logging.ConsoleHandler`. The following example sets the logging level to TRACE (FINEST) and the log file to `EDB-JDBC.LOG`:

```
jdbc:edb://myhost:5444/mydb?loggerLevel=TRACE&loggerFile=EDB-JDBC.  
LOG
```

10.2 Enabling Logging with logging.properties (dynamic)

You can use logging properties to configure the driver dynamically (for example, when using the JDBC Connector with an application server such as Tomcat, JBoss, WildFly, etc.), which makes it easier to enable/disable logging at runtime. The following example demonstrates configuring logging dynamically:

```
handlers = java.util.logging.FileHandler
//logging level
.level = OFF
```

The default file output is in the user's home directory:

```
java.util.logging.FileHandler.pattern = %h/EDB-JDBC%u.log
java.util.logging.FileHandler.limit = 5000000
java.util.logging.FileHandler.count = 20
java.util.logging.FileHandler.formatter = java.util.logging.
→SimpleFormatter java.util.logging.FileHandler.level = FINEST java.
→util.logging.SimpleFormatter.format=%1$tY-%1$tm-%1$td %1$tH:%1$tM:%1
→$tS %4$s %2$s %5$s%6$s%n
```

Use the following command to set the logging level for the JDBC Connector to FINEST (maps to `loggerLevel`):

```
com.edb.level=FINEST
```

Then, execute the application with the logging configuration:

```
java -jar -Djava.util.logging.config.file=logging.
properties run.jar
```

CHAPTER 11

Reference - JDBC Data Types

The following table lists the JDBC data types supported by Advanced Server and the JDBC connector. If you are binding to an Advanced Server type (shown in the middle column) using the `setObject()` method, supply a JDBC value of the type shown in the left column. When you retrieve data, the `getObject()` method will return the object type listed in the right-most column:

JDBC Type	Advanced Server Type	getObject() returns
INTEGER	INT4	java.lang.Integer
TINYINT, SMALLINT	INT2	java.lang.Integer
BIGINT	INT8	java.lang.Long
REAL	FLOAT4	java.lang.Float
DOUBLE, FLOAT	FLOAT8	java.lang.Double (Float is same as double)
DECIMAL, NUMERIC	NUMERIC	java.math.BigDecimal
CHAR	BPCHAR	java.lang.String
VARCHAR, LONGVAR-CHAR	VARCHAR	java.lang.String
DATE	DATE	java.sql.Date
TIME	TIME, TIMETZ	java.sql.Timestamp
TIMESTAMP	TIMESTAMP, TIMESTAMPTZ	java.sql.Timestamp
BINARY	BYTEA	byte[](primitive)
BOOLEAN, BIT	BOOL	java.lang.Boolean
Types.REF	REFCURSOR	java.sql.ResultSet
Types.REF_CURSOR	REFCURSOR	java.sql.ResultSet
Types.OTHER	REFCURSOR	java.sql.ResultSet
Types.OTHER	UUID	java.util.UUID
Types.SQLXML	XML	java.sql.SQLXML

Note: `Types.REF_CURSOR` is only supported for JRE 4.2.

`Types.OTHER` is not only used for `UUID`, but is also used if you do not specify any specific type and allow the server or the JDBC driver to determine the type. If the parameter is an instance of `java.util.UUID`, the driver determines the appropriate internal type and sends it to the server.

CHAPTER 12

Conclusion

EDB JDBC Connector Guide

Copyright © 2007 - 2020 EnterpriseDB Corporation.

All rights reserved.

EnterpriseDB® Corporation

34 Crosby Drive, Suite 201, Bedford, MA 01730, USA

T +1 781 357 3390 F +1 978 467 1307 E

info@enterprisedb.com

www.enterprisedb.com

- EnterpriseDB and Postgres Enterprise Manager are registered trademarks of EnterpriseDB Corporation. EDB and EDB Postgres are trademarks of EnterpriseDB Corporation. Oracle is a registered trademark of Oracle, Inc. Other trademarks may be trademarks of their respective owners.
- EDB designs, establishes coding best practices, reviews, and verifies input validation for the logon UI for EDB Postgres products where present. EDB follows the same approach for additional input components, however the nature of the product may require that it accepts freeform SQL, WMI or other strings to be entered and submitted by trusted users for which limited validation is possible. In such cases it is not possible to prevent users from entering incorrect or otherwise dangerous inputs.
- EDB reserves the right to add features to products that accept freeform SQL, WMI or other potentially dangerous inputs from authenticated, trusted users in the future, but will ensure

all such features are designed and tested to ensure they provide the minimum possible risk, and where possible, require superuser or equivalent privileges.

- EDB does not warrant that we can or will anticipate all potential threats and therefore our process cannot fully guarantee that all potential vulnerabilities have been addressed or considered.

A

Adding a Graphical Interface to a Java Program, [55](#)
Additional Connection Properties, [35](#)
Advanced JDBC Connector Functionality, [59](#)
Advanced Server JDBC Connector Compatibility, [10](#)
Advanced Server JDBC Connector Logging, [101](#)
Advanced Server JDBC Connector Overview, [5](#)
Asynchronous Notification Handling with NoticeListener, [90](#)

C

centos7, [16](#)
centos8, [18](#)
Conclusion, [106](#)
Configuring the Advanced Server JDBC Connector, [30](#)
Configuring the Client, [95](#)
Configuring the Server, [94](#)
Connecting to the Database, [34](#)

E

enable logging with connection properties, [102](#)
enable logging with logging.properties, [103](#)

executeupdate() syntax examples, [54](#)
executing a simple stored procedure, [66](#)
Executing SQL Commands with executeUpdate(), [51](#)
Executing SQL Statements through Statement Objects, [45](#)
Executing Stored Procedures, [64](#)
executing stored procedures with in out parameters, [72](#)
executing stored procedures with in parameters, [68](#)
executing stored procedures with out parameters, [70](#)

F

Freeing Resources, [49](#)

H

Handling Errors, [50](#)

I

inserting bytea data into advanced server database, [79](#)
Installing and Configuring the JDBC Connector, [11](#)
Installing the Connector on a Debian or Ubuntu Host, [22](#)

Installing the Connector on an SLES 12 Host, [21](#)
Installing the Connector with an RPM Package, [12](#)
invoking stored procedures, [65](#)

J

jdbc classes, [8](#)
jdbc driver types, [5](#)
jdbc drivermanager, [9](#)
jdbc interface, [7](#)

L

Loading the Advanced Server JDBC Connector, [33](#)

M

modifying batch size of statement object, [61](#)

P

Preferring Synchronous Secondary Database Servers, [37](#)

R

Reducing Client-side Resource Requirements, [60](#)
Reference - JDBC Data Types, [104](#)
Requirements Overview, [3](#)
retrieving bytea data from advanced server database, [81](#)
Retrieving Results from a ResultSet Object, [48](#)
rhel8, [14](#)

S

Scram Compatibility, [100](#)
Security and Encryption, [93](#)
sslmode connection parameters, [95](#)
supported platforms, [3](#)
supported server versions, [3](#)

T

Testing the SSL JDBC Connection, [97](#)

U

Using BYTEA Data with Java, [78](#)
Using Certificate Authentication Without a Password, [99](#)
using collection, [87](#)
using executeupdate() to insert data, [52](#)
using named notation with a callablestatement object, [46](#)
using object type, [84](#)
Using Object Types and Collections with Java, [83](#)
Using PreparedStatements to Send SQL Commands, [62](#)
using ref cursor to retrieve a resultset, [75](#)
Using REF CURSORS with Java, [75](#)
Using SSL, [93](#)
using ssl without certificate validation, [98](#)
Using the Advanced Server JDBC Connector with Java applications, [31](#)
Using the Graphical Installer to Install the Connector, [24](#)

W

What's New, [2](#)