

CIO BRIEF

EDB Postgres[®] AI Hybrid Manager

Sovereign control as the foundation
for AI-scale, hybrid data operations



CIOs today face a persistent dilemma: choosing between granular control and operational simplicity. EDB Postgres AI (EDB PG AI) Hybrid Manager uniquely addresses this challenge, enabling organizations to achieve both simultaneously. It provides a unified platform that simplifies operations while maintaining full sovereignty, ensuring that organizations can meet regulatory requirements without sacrificing agility.

It is also the catalyst for a strategic shift from managing infrastructure to enabling outcomes. By reducing operational overhead and consolidating tools, it allows teams to focus on innovation, AI initiatives, and business growth. [Ninety-five percent of enterprises](#) want to be their own AI and data platforms within the next three years. This means complete access, control, and observability in a compliant environment for their data. The agentic era will be outcome led, and the technology infrastructure supporting it is critical to delivering economic ROI.

Most important, EDB PG AI positions organizations to compete effectively in a data-driven economy. As the performance gap between leaders and laggards widens, the ability to unify and control data across hybrid environments is becoming a defining criteria for success.

The new CIO mandate: Control, scale, and compete in a distributed world

CIOs today are operating in a fundamentally different environment than even a few years ago. Data is no longer centralized, infrastructure is no longer singular, and innovation is no longer optional. Instead, organizations are navigating highly distributed environments in which data spans on-premises systems, multiple cloud providers, and legacy estates, each with its own operational model and governance constraints.

At the same time, expectations have escalated. Business is demanding faster innovation, AI-driven capabilities, and continuous availability, all while reducing cost and maintaining compliance with increasingly strict data sovereignty regulations. This combination of pressures has created a new mandate for CIOs: Unify control across your fragmented data estate while enabling speed, scale, and security.

EDB's *Sovereignty Matters* research indicates that only 13 percent of enterprises already have their own sovereign data and AI platform, yet those that do are seeing up to five times the ROI of their peers. These organizations share a common characteristic: They have implemented a unified, sovereign control plane that enables consistent access to data while maintaining security and compliance.

Most existing solutions force a trade-off. Enterprises can retain control through manual management or gain simplicity through cloud-managed services—but they cannot achieve both simultaneously. EDB PG AI directly addresses this capability gap.

Control is the new competitive advantage

EDB PG AI is not simply a tool for managing PostgreSQL—it is a platform for modern data and infrastructure operations. It enables organizations to unify operations across distributed environments, automate complex processes, and maintain sovereignty in an increasingly regulated world.

For CIOs, this represents a strategic opportunity to align infrastructure with business objectives. By adopting EDB PG AI's unified, sovereign control plane, organizations can reduce cost, improve efficiency, and accelerate innovation, all while maintaining the control and compliance required to operate at scale.

In a world where data is everywhere, the ability to control it effectively is what separates high-performing organizations from the rest. EDB PG AI provides that control.

The structural constraint: Fragmentation limits innovation

The other issue facing CIOs is fragmentation. Most enterprise Postgres environments are managed through a patchwork of disparate, single-purpose tools, scripts, and vendor-specific services. Database teams must coordinate provisioning, scaling, backups, monitoring, and optimization across multiple database environments, often using different interfaces and workflows for each.

This fragmentation introduces operational inefficiencies and limits the organization's ability to respond to business demands. Database administrators spend up to half of their time on manual tasks, leaving limited capacity for innovation or strategic initiatives.

Cloud-managed database services attempt to address this by offloading operations, but this in turn shifts control of the data to the vendor. Data must reside within provider environments, limiting flexibility, creating compliance challenges, and sacrificing sovereignty. For organizations operating in regulated industries or across multiple jurisdictions, this is not a viable solution.

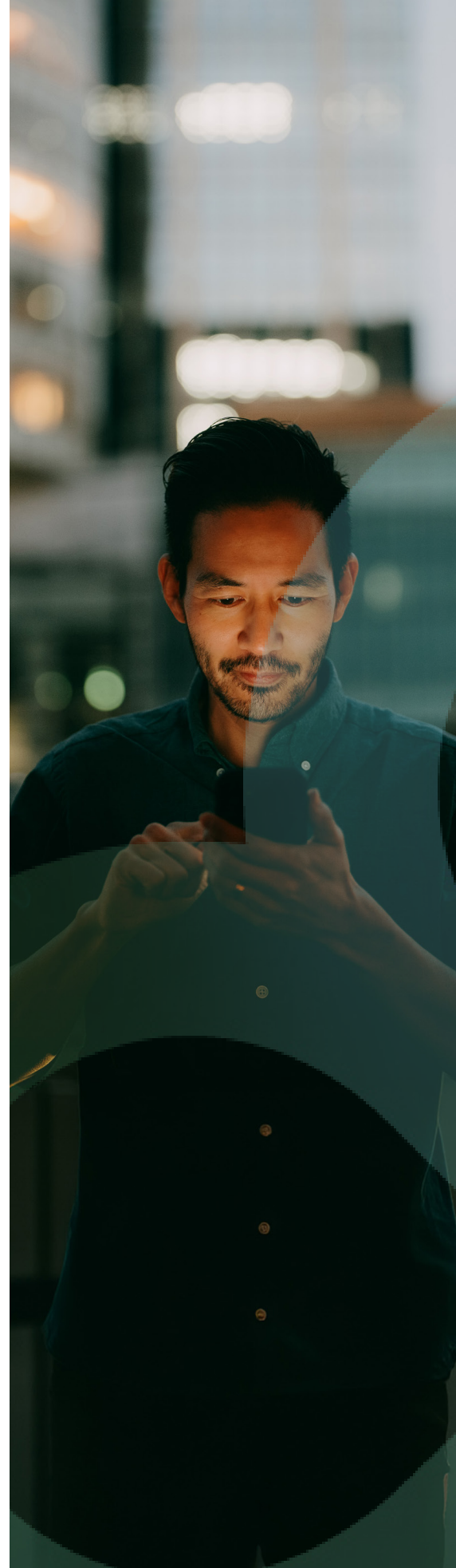
The result is a persistent constraint on innovation: Infrastructure complexity slows down business, and existing tools cannot scale to meet modern demands.

The strategic shift: A unified, sovereign control plane

EDB PG AI introduces a new operating model designed to eliminate this constraint. It provides a single, sovereign control plane for managing the entire Postgres estate across hybrid and multi-cloud environments, enabling organizations to achieve cloud-like agility without relinquishing control.

This is not simply an operational or visualization tool; it is a single pane of glass providing strategic control over your data and AI platform. By consolidating provisioning, scaling, observability, automation, and governance into a single interface, EDB Postgres AI transforms the management of data infrastructure. It allows organizations to operate their entire data estate as a cohesive system rather than as a collection of disconnected components.

All data remains within your enterprise-controlled environment. Organizations retain full authority over data location, access, and compliance policies, while benefiting from automation and scalability.



Business impact: From operational constraint to competitive advantage

EDB PG AI delivers measurable business value across four key dimensions: efficiency, cost, control, and innovation.

Operationally, it reduces the burden of manual database management by automating routine tasks such as provisioning, scaling, and backup management. This allows teams to deploy production-ready databases up to 10 times faster, accelerating time to value and reducing reliance on specialized expertise.

Finally, EDB PG AI accelerates modernization by enabling faster migration to modern Postgres environments. Organizations can transition from legacy systems to cloud-native architectures in days rather than months, ensuring that data is ready to support AI and analytics initiatives.

Business strategy comparison

The following table illustrates how EDB PG AI compares to alternative approaches at the strategic level:

	EDB PG AI	Cloud DBaaS (RDS, Azure, Cloud SQL)	Manual/DIY (CLI, scripts)	Kubernetes operators/IaC
Strengths	Unified control, sovereign automation, multi-cloud flexibility	Simplicity, managed services	Full control, flexibility	Automation, infrastructure scalability
Limitations	Adoption requirements	Vendor lock-in, limited sovereignty, reduced control	High complexity, slow deployment, resource intensive	Fragmented tooling, requires deep expertise
CIO impact	Enables scale, control, and efficiency simultaneously	Faster operations but constrained deployment options and control	Limits scalability, increases operational cost	Partial improvement, still complex

*Competitive comparisons are based on publicly available information and are subject to change as vendor offerings evolve and new information is made available. All product names, trademarks, and registered trademarks are the property of their respective owners.

Technical strategy: Simplifying production complexity

EDB PG AI addresses one of the most significant challenges in modern infrastructure: managing distributed systems without introducing additional complexity.

Unlike external observability tools, EDB Postgres AI embeds intelligence directly into the platform. This enables proactive optimization based on deep Postgres expertise rather than reactive troubleshooting. The system continuously analyzes performance and provides actionable recommendations with simple click-to-apply functionality, allowing teams to optimize workloads and reduce operational burden.

The platform's ability to operate seamlessly across on-premises, public cloud, and hybrid environments ensures that organizations can adopt a hybrid strategy without introducing fragmentation. This flexibility is critical for supporting modern application architectures and AI workloads.

Technical Comparative Analysis

Capability area	EDB PG AI	Cloud DBaaS	DIY/manual	Kubernetes operators
Control plane	Unified across all environments	Vendor-specific; data layer only	None	Partial
Deployment speed	10x faster, with automation	Fast	Slow	Medium
Observability	200+ metrics, recommendations	Limited	Fragmented	Fragmented
Data sovereignty	Full control	Limited	Full	Full
Automation model	Policy driven, embedded intelligence	Vendor controlled	Manual	Partial
Vendor lock-in	None (Postgres standard)	High	None	Low
Operational complexity	Low	Low	High	Medium-high

*Competitive comparisons are based on publicly available information and are subject to change as vendor offerings evolve and new information is made available. All product names, trademarks, and registered trademarks are the property of their respective owners.

EDB Postgres AI: The sovereign data and AI platform for the agentic enterprise

EDB PG AI brings together a unified data layer, governance, a sovereign control plane, and an agent runtime, giving enterprises a trusted foundation for agentic AI on infrastructure they own and control. The platform unifies transactional, analytical, and AI workloads in a single Postgres-based architecture—eliminating ETL, data movement, and operational fragmentation. And you choose where to deploy: on-premises, sovereign system, bring-your-own-cloud, or a managed developer cloud.

The promise is simple: production-ready sovereign AI in days or weeks, not months.



EDB Postgres® AI (EDB PG AI) is the sovereign data and AI platform for the agentic enterprise. Built on Postgres, the world's leading open source database, EDB PG AI unifies transactional, analytical, and AI workloads in a single governed architecture, on-premises and across clouds. To learn more, visit www.enterprisedb.com.