



EDB

EDB Postgres™ Advanced Server

Release 13

Advanced Server Upgrade Guide

Nov 05, 2020

1	Introduction	1
2	Supported Platforms	2
3	Limitations	3
4	Upgrading an Installation With pg_upgrade	4
4.1	Performing an Upgrade	6
4.1.1	Linking versus Copying	7
4.2	Invoking pg_upgrade	8
4.2.1	Command Line Options - Reference	9
4.3	Upgrading to Advanced Server 13	12
4.4	Upgrading a pgAgent Installation	20
4.5	pg_upgrade Troubleshooting	21
4.5.1	Upgrade Error - There seems to be a postmaster servicing the cluster	21
4.5.2	Upgrade Error - fe_sendauth: no password supplied	21
4.5.3	Upgrade Error - New cluster is not empty; exiting	21
4.5.4	Upgrade Error - Failed to load library	21
4.6	Reverting to the Old Cluster	22
5	Performing a Minor Version Update of an RPM Installation	23
6	Using StackBuilder Plus to Perform a Minor Version Update	24
7	Migration to Version 13	30
8	Conclusion	33
	Index	34

CHAPTER 1

Introduction

The EDB Postgres Advanced Server Upgrade Guide is a comprehensive guide about upgrading EDB Postgres Advanced Server (Advanced Server). In this guide you will find detailed information about using:

- `pg_upgrade` to upgrade from an earlier version of Advanced Server to Advanced Server 13.
- `yum` to perform a minor version upgrade on a Linux host.
- `StackBuilder Plus` to perform a minor version upgrade on a Windows host.

CHAPTER 2

Supported Platforms

For information about the platforms and versions supported by Advanced Server, visit the EDB website at:

<https://www.enterprisedb.com/services-support/edb-supported-products-and-platforms#epas>

The following limitations apply to EDB Postgres Advanced Server:

- The `data` directory of a production database should not be stored on an NFS file system.
- The `pg_upgrade` utility cannot upgrade a partitioned table if a foreign key refers to the partitioned table.
- If you are upgrading from the version 9.4 server or a lower version of Advanced Server, and you use partitioned tables that include a `SUBPARTITION BY` clause, you must use `pg_dump` and `pg_restore` to upgrade an existing Advanced Server installation to a later version of Advanced Server. To upgrade, you must:
 1. Use `pg_dump` to preserve the content of the subpartitioned table.
 2. Drop the table from the Advanced Server 9.4 database or a lower version of Advanced Server database.
 3. Use `pg_upgrade` to upgrade the rest of the Advanced Server database to a more recent version.
 4. Use `pg_restore` to restore the subpartitioned table to the latest upgraded Advanced Server database.
- If you perform an upgrade of the Advanced Server installation, you must rebuild any hash-partitioned table on the upgraded server.

Upgrading an Installation With `pg_upgrade`

While minor upgrades between versions are fairly simple and require only the installation of new executables, past major version upgrades has been both expensive and time consuming. `pg_upgrade` facilitates migration between any version of Advanced Server (version 9.0 or later), and any subsequent release of Advanced Server that is supported on the same platform.

Without `pg_upgrade`, to migrate from an earlier version of Advanced Server to Advanced Server 13, you must export all of your data using `pg_dump`, install the new release, run `initdb` to create a new cluster, and then import your old data.

`pg_upgrade` can reduce both the amount of time required and the disk space required for many major-version upgrades.

The `pg_upgrade` utility performs an in-place transfer of existing data between Advanced Server and any subsequent version.

Several factors determine if an in-place upgrade is practical:

- The on-disk representation of user-defined tables must not change between the original version and the upgraded version.
- The on-disk representation of data types must not change between the original version and the upgraded version.
- To upgrade between major versions of Advanced Server with `pg_upgrade`, both versions must share a common binary representation for each data type. Therefore, you cannot use `pg_upgrade` to migrate from a 32-bit to a 64-bit Linux platform.

Before performing a version upgrade, `pg_upgrade` will verify that the two clusters (the old cluster and the new cluster) are compatible.

If the upgrade involves a change in the on-disk representation of database objects or data, or involves a change in the binary representation of data types, `pg_upgrade` will be unable to perform the upgrade; to

upgrade, you will have to `pg_dump` the old data and then import that data into the new cluster.

The `pg_upgrade` executable is distributed with Advanced Server 13, and is installed as part of the Database Server component; no additional installation or configuration steps are required.

4.1 Performing an Upgrade

To upgrade an earlier version of Advanced Server to the current version, you must:

- Install the current version of Advanced Server. The new installation must contain the same supporting server components as the old installation.
- Empty the target database or create a new target cluster with `initdb`.
- Place the `pg_hba.conf` file for both databases in `trust` authentication mode (to avoid authentication conflicts).
- Shut down the old and new Advanced Server services.
- Invoke the `pg_upgrade` utility.

When `pg_upgrade` starts, it performs a compatibility check to ensure that all required executables are present and contain the expected version numbers. The verification process also checks the old and new `$PGDATA` directories to ensure that the expected files and subdirectories are in place. If the verification process succeeds, `pg_upgrade` starts the old `postmaster` and runs `pg_dumpall --schema-only` to capture the metadata contained in the old cluster. The script produced by `pg_dumpall` is used in a later step to recreate all user-defined objects in the new cluster.

Note that the script produced by `pg_dumpall` recreates only user-defined objects and not system-defined objects. The new cluster will *already* contain the system-defined objects created by the latest version of Advanced Server.

After extracting the metadata from the old cluster, `pg_upgrade` performs the bookkeeping tasks required to sync the new cluster with the existing data.

`pg_upgrade` runs the `pg_dumpall` script against the new cluster to create (empty) database objects of the same shape and type as those found in the old cluster. Then, `pg_upgrade` links or copies each table and index from the old cluster to the new cluster.

If you are upgrading from a version of Advanced Server prior to 9.5 to Advanced Server 13 and have installed the `edb_dblink_oci` or `edb_dblink_libpq` extension, you must drop the extension before performing an upgrade. To drop the extension, connect to the server with the `psql` or PEM client, and invoke the commands:

```
DROP EXTENSION edb_dblink_oci;  
DROP EXTENSION edb_dblink_libpq;
```

When you have completed upgrading, you can use the `CREATE EXTENSION` command to add the current versions of the extensions to your installation.

4.1.1 Linking versus Copying

When invoking `pg_upgrade`, you can use a command-line option to specify whether `pg_upgrade` should *copy* or *link* each table and index in the old cluster to the new cluster.

Linking is much faster because `pg_upgrade` simply creates a second name (a hard link) for each file in the cluster; linking also requires no extra workspace because `pg_upgrade` does not make a copy of the original data. When linking the old cluster and the new cluster, the old and new clusters share the data; note that after starting the new cluster, your data can no longer be used with the previous version of Advanced Server.

If you choose to copy data from the old cluster to the new cluster, `pg_upgrade` will still reduce the amount of time required to perform an upgrade compared to the traditional `dump/restore` procedure. `pg_upgrade` uses a file-at-a-time mechanism to copy data files from the old cluster to the new cluster (versus the row-by-row mechanism used by `dump/restore`). When you use `pg_upgrade`, you avoid building indexes in the new cluster; each index is simply copied from the old cluster to the new cluster. Finally, using a `dump/restore` procedure to upgrade requires a great deal of workspace to hold the intermediate text-based dump of all of your data, while `pg_upgrade` requires very little extra workspace.

Data that is stored in user-defined tablespaces is not copied to the new cluster; it stays in the same location in the file system, but is copied into a subdirectory whose name reflects the version number of the new cluster. To manually relocate files that are stored in a tablespace after upgrading, move the files to the new location and update the symbolic links (located in the `pg_tblspc` directory under your cluster's `data` directory) to point to the files.

4.2 Invoking pg_upgrade

When invoking `pg_upgrade`, you must specify the location of the old and new cluster's `PGDATA` and executable (`/bin`) directories, as well as the name of the Advanced Server superuser, and the ports on which the installations are listening. A typical call to invoke `pg_upgrade` to migrate from Advanced Server 12 to Advanced Server 13 takes the form:

```
pg_upgrade
--old-datadir <path_to_12_data_directory>
--new-datadir <path_to_13_data_directory>
--user <superuser_name>
--old-bindir <path_to_12_bin_directory>
--new-bindir <path_to_13_bin_directory>
--old-port <12_port> --new-port <13_port>
```

Where:

```
--old-datadir path_to_12_data_directory
```

Use the `--old-datadir` option to specify the complete path to the data directory within the Advanced Server 12 installation.

```
--new-datadir path_to_13_data_directory
```

Use the `--new-datadir` option to specify the complete path to the data directory within the Advanced Server 13 installation.

```
--username superuser_name
```

Include the `--username` option to specify the name of the Advanced Server superuser. The superuser name should be the same in both versions of Advanced Server. By default, when Advanced Server is installed in Oracle mode, the superuser is named `enterprisedb`. If installed in PostgreSQL mode, the superuser is named `postgres`.

If the Advanced Server superuser name is not the same in both clusters, the clusters will not pass the `pg_upgrade` consistency check.

```
--old-bindir path_to_12_bin_directory
```

Use the `--old-bindir` option to specify the complete path to the `bin` directory in the Advanced Server 12 installation.

```
--new-bindir path_to_13_bin_directory
```

Use the `--new-bindir` option to specify the complete path to the `bin` directory in the Advanced Server 13 installation.

```
--old-port 12_port
```

Include the `--old-port` option to specify the port on which Advanced Server 12 listens for connections.

```
--new-port 13_port
```

Include the `--new-port` option to specify the port on which Advanced Server 13 listens for connections.

4.2.1 Command Line Options - Reference

`pg_upgrade` accepts the following command line options; each option is available in a long form or a short form:

```
-b path_to_old_bin_directory  
--old-bindir path_to_old_bin_directory
```

Use the `-b` or `--old-bindir` keyword to specify the location of the old cluster's executable directory.

```
-B path_to_new_bin_directory  
--new-bindir path_to_new_bin_directory
```

Use the `-B` or `--new-bindir` keyword to specify the location of the new cluster's executable directory.

```
-c  
--check
```

Include the `-c` or `--check` keyword to specify that `pg_upgrade` should perform a consistency check on the old and new cluster without performing a version upgrade.

```
-d path_to_old_data_directory  
--old-datadir path_to_old_data_directory
```

Use the `-d` or `--old-datadir` keyword to specify the location of the old cluster's data directory.

```
-D path_to_new_data_directory  
--new-datadir path_to_new_data_directory
```

Use the `-D` or `--new-datadir` keyword to specify the location of the new cluster's data directory.

Data that is stored in user-defined tablespaces is not copied to the new cluster; it stays in the same location in the file system, but is copied into a subdirectory whose name reflects the version number of the new cluster. To manually relocate files that are stored in a tablespace after upgrading, you must move the files to the new location and update the symbolic links (located in the `pg_tblspc` directory under your cluster's data directory) to point to the files.

`-j`
`--jobs`

Include the `-j` or `--jobs` keyword to specify the number of simultaneous processes or threads to use during the upgrade.

`-k`
`--link`

Include the `-k` or `--link` keyword to create a hard link from the new cluster to the old cluster. See *Linking versus Copying* for more information about using a symbolic link.

`-o options`
`--old-options options`

Use the `-o` or `--old-options` keyword to specify options that will be passed to the old `postgres` command. Enclose options in single or double quotes to ensure that they are passed as a group.

`-O options`
`--new-options options`

Use the `-O` or `--new-options` keyword to specify options to be passed to the new `postgres` command. Enclose options in single or double quotes to ensure that they are passed as a group.

`-p old_port_number`
`--old-port old_port_number`

Include the `-p` or `--old-port` keyword to specify the port number of the Advanced Server installation that you are upgrading.

`-P new_port_number`
`--new-port new_port_number`

Include the `-P` or `--new-port` keyword to specify the port number of the new Advanced Server installation.

Note: If the original Advanced Server installation is using port number 5444 when you invoke the Advanced Server 13 installer, the installer will recommend using listener port 5445 for the new installation of Advanced Server.

`-r`
`--retain`

During the upgrade process, `pg_upgrade` creates four append-only log files; when the upgrade is completed, `pg_upgrade` deletes these files. Include the `-r` or `--retain` option to specify that the server should retain the `pg_upgrade` log files.

`-U user_name`
`--username user_name`

Include the `-U` or `--username` keyword to specify the name of the Advanced Server database superuser. The same superuser must exist in both clusters.

`-v`
`--verbose`

Include the `-v` or `--verbose` keyword to enable verbose output during the upgrade process.

`-V`
`--version`

Use the `-V` or `--version` keyword to display version information for `pg_upgrade`.

`-?`
`-h`
`--help`

Use `-?`, `-h`, or `--help` options to display `pg_upgrade` help information.

4.3 Upgrading to Advanced Server 13

You can use `pg_upgrade` to upgrade from an existing installation of Advanced Server into the cluster built by the Advanced Server 13 installer or into an alternate cluster created using the `initdb` command. In this section, we will provide the details of upgrading into the cluster provided by the installer.

The basic steps to perform an upgrade into an empty cluster created with the `initdb` command are the same as the steps to upgrade into the cluster created by the Advanced Server 13 installer, but you can omit Step 2 (Empty the `edb` database), and substitute the location of the alternate cluster when specifying a target cluster for the upgrade.

If a problem occurs during the upgrade process, you can revert to the previous version. See [Reverting to the old cluster](#) Section for detailed information about this process.

You must be an operating system superuser or Windows Administrator to perform an Advanced Server upgrade.

Step 1 - Install the New Server

Install Advanced Server 13, specifying the same non-server components that were installed during the previous Advanced Server installation. The new cluster and the old cluster must reside in different directories.

Step 2 - Empty the target database

The target cluster must not contain any data; you can create an empty cluster using the `initdb` command, or you can empty a database that was created during the installation of Advanced Server 13. If you have installed Advanced Server in PostgreSQL mode, the installer creates a single database named `postgres`; if you have installed Advanced Server in Oracle mode, it creates a database named `postgres` and a database named `edb`.

The easiest way to empty the target database is to drop the database and then create a new database. Before invoking the `DROP DATABASE` command, you must disconnect any users and halt any services that are currently using the database.

On Windows, navigate through the Control Panel to the Services manager; highlight each service in the Services list, and select Stop.

On Linux, open a terminal window, assume superuser privileges, and manually stop each service; for example, if you are on Linux 6.x, invoke the following command to stop the `pgAgent` service:

```
service edb-pgagent-13 stop
```

After stopping any services that are currently connected to Advanced Server, you can use the EDB-PSQL command line client to drop and create a database. When the client opens, connect to the `template1` database as the database superuser; if prompted, provide authentication information. Then, use the following command to drop your database:

```
DROP DATABASE <database_name>;
```

Where `database_name` is the name of the database.

Then, create an empty database based on the contents of the `template1` database.

```
CREATE DATABASE <database_name>;
```

Step 3 - Set both servers in trust mode

During the upgrade process, `pg_upgrade` will connect to the old and new servers several times; to make the connection process easier, you can edit the `pg_hba.conf` file, setting the authentication mode to `trust`. To modify the `pg_hba.conf` file, navigate through the Start menu to the EDB Postgres menu; to the Advanced Server menu, and open the Expert Configuration menu; select the Edit `pg_hba.conf` menu option to open the `pg_hba.conf` file.

You must allow trust authentication for the previous Advanced Server installation, and Advanced Server 13 servers. Edit the `pg_hba.conf` file for both installations of Advanced Server as shown in the following figure.

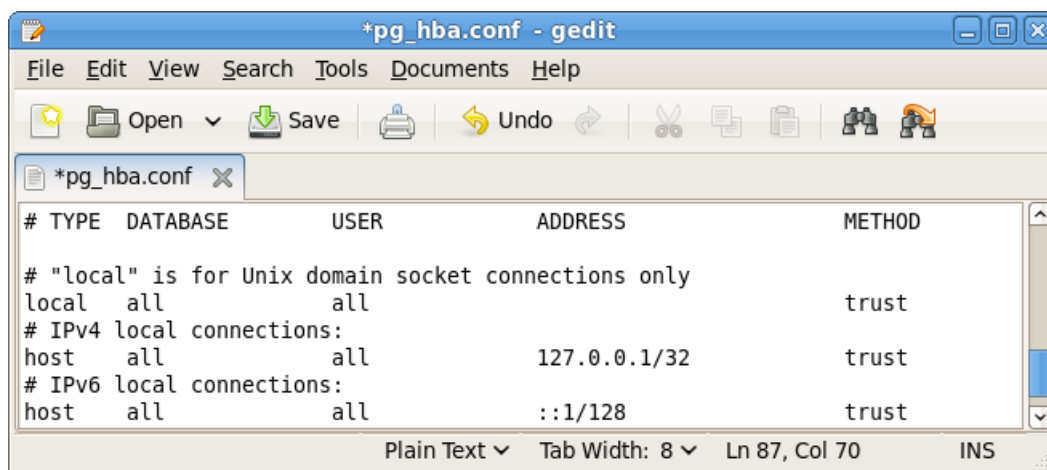


Fig. 1: Configuring Advanced Server to use trust authentication.

After editing each file, save the file and exit the editor.

If the system is required to maintain `md5` authentication mode during the upgrade process, you can specify user passwords for the database superuser in a password file (`pgpass.conf` on Windows, `.pgpass` on Linux). For more information about configuring a password file, see the PostgreSQL Core Documentation, available at:

<https://www.postgresql.org/docs/current/static/libpq-pgpass.html>

Step 4 - Stop All Component Services and Servers

Before you invoke `pg_upgrade`, you must stop any services that belong to the original Advanced Server installation, Advanced Server 13, or the supporting components. This ensures that a service will not attempt to access either cluster during the upgrade process.

The services that are most likely to be running in your installation are:

Service:	On Linux:	On Windows:
Postgres Plus Advanced Server 9.0	ppas-9.0	ppas-9.0
Postgres Plus Advanced Server 9.1	ppas-9.1	ppas-9.1
Postgres Plus Advanced Server 9.2	ppas-9.2	ppas-9.2
Postgres Plus Advanced Server 9.3	ppas-9.3	ppas-9.3
Postgres Plus Advanced Server 9.4	ppas-9.4	ppas-9.4
Postgres Plus Advanced Server 9.5	ppas-9.5	ppas-9.5
EnterpriseDB Postgres Advanced Server 9.6	edb-as-9.6	edb-as-9.6
EnterpriseDB Postgres Advanced Server 10	edb-as-10	edb-as-10
EnterpriseDB Postgres Advanced Server 11	edb-as-11	edb-as-11
EnterpriseDB Postgres Advanced Server 12	edb-as-12	edb-as-12
EnterpriseDB Postgres Advanced Server 13	edb-as-13	edb-as-13
Advanced Server 9.0 Scheduling Agent	ppasAgent-90	Postgres Plus Advanced Server 9.0 Scheduling Agent
Advanced Server 9.1 Scheduling Agent	ppasAgent-91	Postgres Plus Advanced Server 9.1 Scheduling Agent
Advanced Server 9.2 Scheduling Agent	ppas-agent-9.2	Postgres Plus Advanced Server 9.2 Scheduling Agent
Advanced Server 9.3 Scheduling Agent	ppas-agent-9.3	Postgres Plus Advanced Server 9.3 Scheduling Agent
Advanced Server 9.4 Scheduling Agent	ppas-agent-9.4	Postgres Plus Advanced Server 9.4 Scheduling Agent
Advanced Server 9.5 Scheduling Agent	ppas-agent-9.5	Postgres Plus Advanced Server 9.5 Scheduling Agent
Advanced Server 9.6 Scheduling Agent (pgAgent)	edb-pgagent-9.6	EnterpriseDB Postgres Advanced Server 9.6 Scheduling Agent
Infinite Cache 9.2	ppas-infinitecache-9.2	N/A
Infinite Cache 9.3	ppas-infinitecache-9.3	N/A
Infinite Cache 9.4	ppas-infinitecache	N/A
Infinite Cache 9.5	ppas-infinitecache	N/A
Infinite Cache 9.6	edb-icache	N/A
Infinite Cache 10	edb-icache	N/A
PgBouncer 9.0	pgbouncer-90	pgbouncer-90
PgBouncer 9.1	pgbouncer-91	pgbouncer-91

continues on next page

Table 1 – continued from previous page

Service:	On Linux:	On Windows:
PgBouncer 9.2	pgbouncer-9.2	pgbouncer-9.2
PgBouncer 9.3	pgbouncer-9.3	pgbouncer-9.3
PgBouncer	Pgbouncer	Pgbouncer
PgBouncer 1.6	ppas-pgbouncer-1.6 or ppas-pgbouncer16	ppas-pgbouncer-1.6
PgBouncer 1.7	edb-pgbouncer-1.7	edb-pgbouncer-1.7
PgPool 9.2	ppas-pgpool-9.2	N/A
PgPool 9.3	ppas-pgpool-9.3	N/A
PgPool	ppas-pgpool	N/A
PgPool 3.4	ppas-pgpool-3.4 or ppas-pgpool34	N/A
pgPool-II	edb-pgpool-3.5	N/A
Slony 9.2	ppas-replication-9.2	ppas-replication-9.2
Slony 9.3	ppas-replication-9.3	ppas-replication-9.3
Slony 9.4	ppas-replication-9.4	ppas-replication-9.4
Slony 9.5	ppas-replication-9.5	ppas-replication-9.5
Slony 9.6	edb-slony-replication-9.6	edb-slony-replication-9.6
xDB Publication Server 9.0	edb-xdbpubserver-90	Publication Service 90
xDB Publication Server 9.1	edb-xdbpubserver-91	Publication Service 91
xDB Subscription Server	edb-xdbsubserver-90	Subscription Service 90
xDB Subscription Server	edb-xdbsubserver-91	Subscription Service 91
EDB Replication Server v6.x	edb-xdbpubserver	Publication Service for xDB Replication Server
EDB Subscription Server v6.x	edb-xdbsubserver	Subscription Service for xDB Replication Server

To stop a service on Windows:

Open the `Services` applet; highlight each Advanced Server or supporting component service displayed in the list, and select `Stop`.

To stop a service on Linux:

Open a terminal window and manually stop each service at the command line.

Step 5 for Linux only - Assume the identity of the cluster owner

If you are using Linux, assume the identity of the Advanced Server cluster owner. (The following example assumes Advanced Server was installed in the default, compatibility with Oracle database mode, thus assigning `enterprisedb` as the cluster owner. If installed in compatibility with PostgreSQL database mode, `postgres` is the cluster owner.)

```
su - enterprisedb
```

Enter the Advanced Server cluster owner password if prompted. Then, set the path to include the location of the `pg_upgrade` executable:

```
export PATH=$PATH:/usr/edb/as13/bin
```

During the upgrade process, `pg_upgrade` writes a file to the current working directory of the `enterprisedb` user; you must invoke `pg_upgrade` from a directory where the `enterprisedb` user has write privileges. After performing the above commands, navigate to a directory in which the `enterprisedb` user has sufficient privileges to write a file.

```
cd /tmp
```

Proceed to Step 6.

Step 5 for Windows only - Assume the identity of the cluster owner

If you are using Windows, open a terminal window, assume the identity of the Advanced Server cluster owner and set the path to the `pg_upgrade` executable.

If the `--serviceaccount service_account_user` parameter was specified during the initial installation of Advanced Server, then `service_account_user` is the Advanced Server cluster owner and is the user to be given with the `RUNAS` command.

```
RUNAS /USER:service_account_user "CMD.EXE"
SET PATH=%PATH%;C:\Program Files\edb\as13\bin
```

During the upgrade process, `pg_upgrade` writes a file to the current working directory of the service account user; you must invoke `pg_upgrade` from a directory where the service account user has write privileges. After performing the above commands, navigate to a directory in which the service account user has sufficient privileges to write a file.

```
cd %TEMP%
```

Proceed to Step 6.

If the `--serviceaccount` parameter was omitted during the initial installation of Advanced Server, then the default owner of the Advanced Server service and the database cluster is `NT AUTHORITY\NetworkService`.

When `NT AUTHORITY\NetworkService` is the service account user, the `RUNAS` command may not be usable as it prompts for a password and the `NT AUTHORITY\NetworkService` account is not assigned a password. Thus, there is typically a failure with an error message such as, “Unable to acquire user password”.

Under this circumstance a Windows utility program named `Psexec` must be used to run `CMD.EXE` as the service account `NT AUTHORITY\NetworkService`.

The `Psexec` program must be obtained by downloading `PSTools`, which is available at the following site:

<https://technet.microsoft.com/en-us/sysinternals/bb897553.aspx>.

You can then use the following command to run `CMD.EXE` as `NT AUTHORITY\NetworkService`, and then set the path to the `pg_upgrade` executable.

```
psexec.exe -u "NT AUTHORITY\NetworkService" CMD.EXE
SET PATH=%PATH%;C:\Program Files\edb\as13\bin
```

During the upgrade process, `pg_upgrade` writes a file to the current working directory of the service account user; you must invoke `pg_upgrade` from a directory where the service account user has write privileges. After performing the above commands, navigate to a directory in which the service account user has sufficient privileges to write a file.

```
cd %TEMP%
```

Proceed with Step 6.

Step 6 - Perform a consistency check

Before attempting an upgrade, perform a consistency check to assure that the old and new clusters are compatible and properly configured. Include the `--check` option to instruct `pg_upgrade` to perform the consistency check.

The following example demonstrates invoking `pg_upgrade` to perform a consistency check on Linux:

```
pg_upgrade -d /var/lib/edb/as12/data
-D /var/lib/edb/as13/data -U enterprisedb
-b /usr/edb/as12/bin -B /usr/edb/as13/bin -p 5444 -P 5445 --check
```

If the command is successful, it will return `*Clusters are compatible*`.

If you are using Windows, you must quote any directory names that contain a space:

```
pg_upgrade.exe
-d "C:\Program Files\ PostgresPlus\12AS\data"
-D "C:\Program Files\edb\as13\data" -U enterprisedb
-b "C:\Program Files\PostgresPlus\12AS\bin"
-B "C:\Program Files\edb\as13\bin" -p 5444 -P 5445 --check
```

During the consistency checking process, `pg_upgrade` will log any discrepancies that it finds to a file located in the directory from which `pg_upgrade` was invoked. When the consistency check completes, review the file to identify any missing components or upgrade conflicts. You must resolve any conflicts before invoking `pg_upgrade` to perform a version upgrade.

If `pg_upgrade` alerts you to a missing component, you can use StackBuilder Plus to add the component that contains the component. Before using StackBuilder Plus, you must restart the Advanced Server 13 service. After restarting the service, open StackBuilder Plus by navigating through the Start menu to the Advanced Server 13 menu, and selecting StackBuilder Plus. Follow the onscreen advice of the StackBuilder Plus wizard to download and install the missing components.

When `pg_upgrade` has confirmed that the clusters are compatible, you can perform a version upgrade.

Step 7 - Run `pg_upgrade`

After confirming that the clusters are compatible, you can invoke `pg_upgrade` to upgrade the old cluster to the new version of Advanced Server.

On Linux:

```
pg_upgrade -d /var/lib/edb/as12/data
-D /var/lib/edb/as13/data -U enterprisedb
-b /usr/edb/as12/bin -B /usr/edb/as13/bin -p 5444 -P 5445
```

On Windows:

```
pg_upgrade.exe -d "C:\Program Files\PostgresPlus\12AS\data"
-D "C:\Program Files\edb\as13\data" -U enterprisedb
-b "C:\Program Files\PostgresPlus\12AS\bin"
-B "C:\Program Files\edb\as13\bin" -p 5444 -P 5445
```

pg_upgrade will display the progress of the upgrade onscreen:

```
$ pg_upgrade -d /var/lib/edb/as12/data -D /var/lib/edb/as13/data -U
enterprisedb -b /usr/edb/as12/bin -B /usr/edb/as13/bin -p 5444 -P 5445
Performing Consistency Checks
-----
Checking current, bin, and data directories           ok
Checking cluster versions                             ok
Checking database user is a superuser                 ok
Checking for prepared transactions                    ok
Checking for reg* system OID user data types         ok
Checking for contrib/isn with bigint-passing mismatch ok
Creating catalog dump                                 ok
Checking for presence of required libraries           ok
Checking database user is a superuser                 ok
Checking for prepared transactions                    ok

If pg_upgrade fails after this point, you must re-initdb the
new cluster before continuing.

Performing Upgrade
-----
Analyzing all rows in the new cluster                 ok
Freezing all rows on the new cluster                  ok
Deleting files from new pg\_clog                       ok
Copying old pg\_clog to new server                     ok
Setting next transaction ID for new cluster            ok
Resetting WAL archives                               ok
Setting frozenxid counters in new cluster              ok
Creating databases in the new cluster                  ok
Adding support functions to new cluster                ok
Restoring database schema to new cluster               ok
Removing support functions from new cluster            ok
Copying user relation files                           ok

Setting next OID for new cluster                      ok
Creating script to analyze new cluster                 ok
Creating script to delete old cluster                  ok

Upgrade Complete
-----
Optimizer statistics are not transferred by pg\_upgrade so,
once you start the new server, consider running:
    analyze_new_cluster.sh

Running this script will delete the old cluster's data files:
```

(continues on next page)

(continued from previous page)

```
delete_old_cluster.sh
```

While `pg_upgrade` runs, it may generate SQL scripts that handle special circumstances that it has encountered during your upgrade. For example, if the old cluster contains large objects, you may need to invoke a script that defines the default permissions for the objects in the new cluster. When performing the pre-upgrade consistency check `pg_upgrade` will alert you to any script that you may be required to run manually.

You must invoke the scripts after `pg_upgrade` completes. To invoke the scripts, connect to the new cluster as a database superuser with the EDB-PSQL command line client, and invoke each script using the `\i` option:

```
\i complete_path_to_script/script.sql
```

It is generally unsafe to access tables referenced in rebuild scripts until the rebuild scripts have completed; accessing the tables could yield incorrect results or poor performance. Tables not referenced in rebuild scripts can be accessed immediately.

If `pg_upgrade` fails to complete the upgrade process, the old cluster will be unchanged, except that `$PGDATA/global/pg_control` is renamed to `pg_control.old` and each tablespace is renamed to `tablespace.old`. To revert to the pre-invocation state:

1. Delete any tablespace directories created by the new cluster.
2. Rename `$PGDATA/global/pg_control`, removing the `.old` suffix.
3. Rename the old cluster tablespace directory names, removing the `.old` suffix.
4. Remove any database objects (from the new cluster) that may have been moved before the upgrade failed.

After performing these steps, resolve any upgrade conflicts encountered before attempting the upgrade again.

When the upgrade is complete, `pg_upgrade` may also recommend vacuuming the new cluster, and will provide a script that allows you to delete the old cluster.

Note: Before removing the old cluster, ensure that the cluster has been upgraded as expected, and that you have preserved a backup of the cluster in case you need to revert to a previous version.

Step 8 - Restore the authentication settings in the `pg_hba.conf` file

If you modified the `pg_hba.conf` file to permit `trust` authentication, update the contents of the `pg_hba.conf` file to reflect your preferred authentication settings.

Step 9 - Move and identify user-defined tablespaces (Optional)

If you have data stored in a user-defined tablespace, you must manually relocate tablespace files after upgrading; move the files to the new location and update the symbolic links (located in the `pg_tblspc` directory under your cluster's `data` directory) to point to the files.

4.4 Upgrading a pgAgent Installation

If your existing Advanced Server installation uses pgAgent, you can use a script provided with the Advanced Server 13 installer to update pgAgent. The script is named `dbms_job.upgrade.script.sql`, and is located in the `/share/contrib/` directory under your Advanced Server installation.

If you are using `pg_upgrade` to upgrade your installation, you should:

1. Perform the upgrade.
2. Invoke the `dbms_job.upgrade.script.sql` script to update the catalog files. If your existing pgAgent installation was performed with a script, the update will convert the installation to an extension.

4.5 pg_upgrade Troubleshooting

The troubleshooting tips in this section address problems you may encounter when using `pg_upgrade`.

4.5.1 Upgrade Error - There seems to be a postmaster servicing the cluster

If `pg_upgrade` reports that a postmaster is servicing the cluster, please stop all Advanced Server services and try the upgrade again.

4.5.2 Upgrade Error - fe_sendauth: no password supplied

If `pg_upgrade` reports an authentication error that references a missing password, please modify the `pg_hba.conf` files in the old and new cluster to enable `trust` authentication, or configure the system to use a `pgpass.conf` file.

4.5.3 Upgrade Error - New cluster is not empty; exiting

If `pg_upgrade` reports that the new cluster is not empty, please empty the new cluster. The target cluster may not contain any user-defined databases.

4.5.4 Upgrade Error - Failed to load library

If the original Advanced Server cluster included libraries that are not included in the Advanced Server 13 cluster, `pg_upgrade` will alert you to the missing component during the consistency check by writing an entry to the `loadable_libraries.txt` file in the directory from which you invoked `pg_upgrade`. Generally, for missing libraries that are not part of a major component upgrade, perform the following steps:

1. Restart the Advanced Server service.
Use StackBuilder Plus to download and install the missing module. Then:
2. Stop the Advanced Server service.
3. Resume the upgrade process: invoke `pg_upgrade` to perform consistency checking.
4. When you have resolved any remaining problems noted in the consistency checks, invoke `pg_upgrade` to perform the data migration from the old cluster to the new cluster.

4.6 Reverting to the Old Cluster

The method used to revert to a previous cluster varies with the options specified when invoking `pg_upgrade`:

- If you specified the `--check` option when invoking `pg_upgrade`, an upgrade has not been performed, and no modifications have been made to the old cluster; you can re-use the old cluster at any time.
- If you included the `--link` option when invoking `pg_upgrade`, the data files are shared between the old and new cluster after the upgrade completes. If you have started the server that is servicing the new cluster, the new server has written to those shared files and it is unsafe to use the old cluster.
- If you ran `pg_upgrade` without the `--link` specification or have not started the new server, the old cluster is unchanged, except that the `.old` suffix has been appended to the `$PGDATA/global/pg_control` and `tablespace` directories.
- To reuse the old cluster, delete the `tablespace` directories created by the new cluster and remove the `.old` suffix from `$PGDATA/global/pg_control` and the old cluster `tablespace` directory names and restart the server that services the old cluster.

Performing a Minor Version Update of an RPM Installation

If you used an RPM package to install Advanced Server or its supporting components, you can use `yum` to perform a minor version upgrade to a more recent version. To review a list of the package updates that are available for your system, open a command line, assume root privileges, and enter the command:

```
yum check-update <package_name>
```

Where `package_name` is the search term for which you wish to search for updates. Please note that you can include wild-card values in the search term. To use `yum update` to install an updated package, use the command:

```
yum update <package_name>
```

Where `package_name` is the name of the package you wish to update. Include wild-card values in the update command to update multiple related packages with a single command. For example, use the following command to update all packages whose names include the expression `edb`:

```
yum update edb*
```

Note: The `yum update` command will only perform an update between minor releases; to update between major releases, you must use `pg_upgrade`.

For more information about using `yum` commands and options, enter `yum --help` on your command line, or visit:

https://access.redhat.com/documentation/en-US/Red_Hat_Enterprise_Linux/6/html/Deployment_Guide/ch-yum.html

Using StackBuilder Plus to Perform a Minor Version Update

StackBuilder Plus is supported only on Windows systems.

The StackBuilder Plus utility provides a graphical interface that simplifies the process of updating, downloading, and installing modules that complement your Advanced Server installation. When you install a module with StackBuilder Plus, StackBuilder Plus automatically resolves any software dependencies.

You can invoke StackBuilder Plus at any time after the installation has completed by selecting the `StackBuilder Plus` menu option from the `Apps` menu. Enter your system password (if prompted), and the StackBuilder Plus welcome window opens.



Fig. 1: *The StackBuilder Plus welcome window*

Use the drop-down listbox on the welcome window to select your Advanced Server installation.

StackBuilder Plus requires Internet access; if your installation of Advanced Server resides behind a firewall (with restricted Internet access), StackBuilder Plus can download program installers through a proxy server. The module provider determines if the module can be accessed through an HTTP proxy or an FTP proxy; currently, all updates are transferred via an HTTP proxy and the FTP proxy information is not used.

If the selected Advanced Server installation has restricted Internet access, use the `Proxy servers` on the Welcome window to open the `Proxy servers` dialog (shown in the following figure).

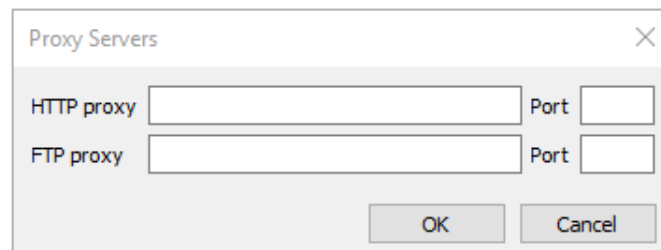


Fig. 2: *The Proxy servers dialog*

Enter the IP address and port number of the proxy server in the `HTTP proxy` on the `Proxy servers` dialog. Currently, all StackBuilder Plus modules are distributed via HTTP proxy (FTP proxy information is ignored). Click `OK` to continue.

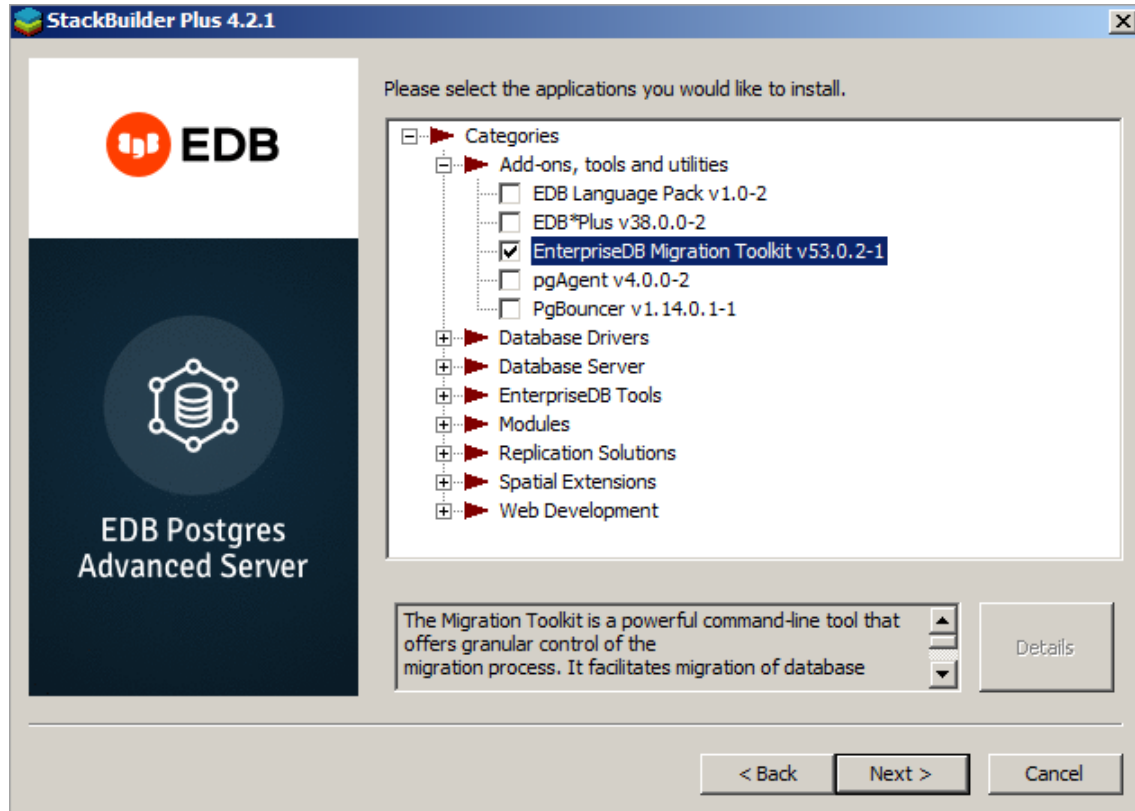


Fig. 3: The StackBuilder Plus module selection window

The tree control on the StackBuilder Plus module selection window (shown in the figure) displays a node for each module category.

To add a new component to the selected Advanced Server installation or to upgrade a component, check the box to the left of the module name and click `Next`. If prompted, enter your email address and password on the StackBuilder Plus registration window.

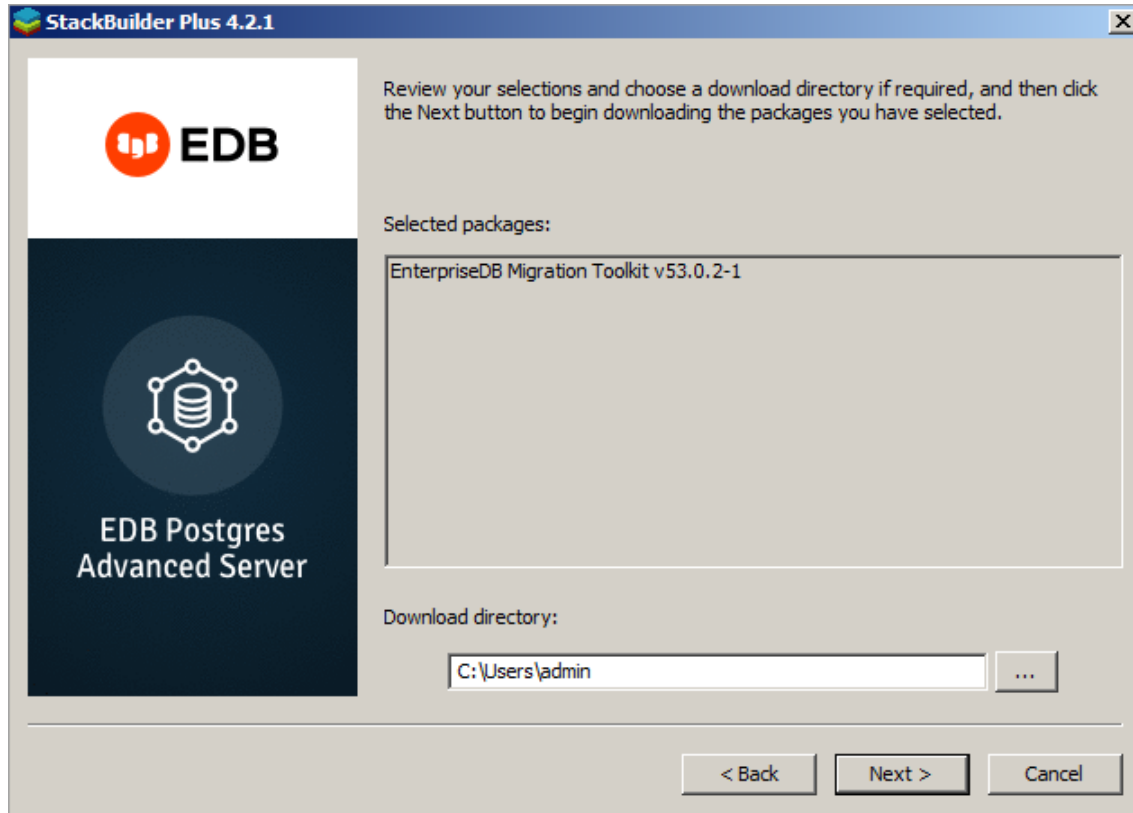


Fig. 4: A summary window displays a list of selected packages

StackBuilder Plus confirms the packages selected. The Selected packages dialog will display the name and version of the installer; click Next to continue.

When the download completes, a window opens that confirms the installation files have been downloaded and are ready for installation.

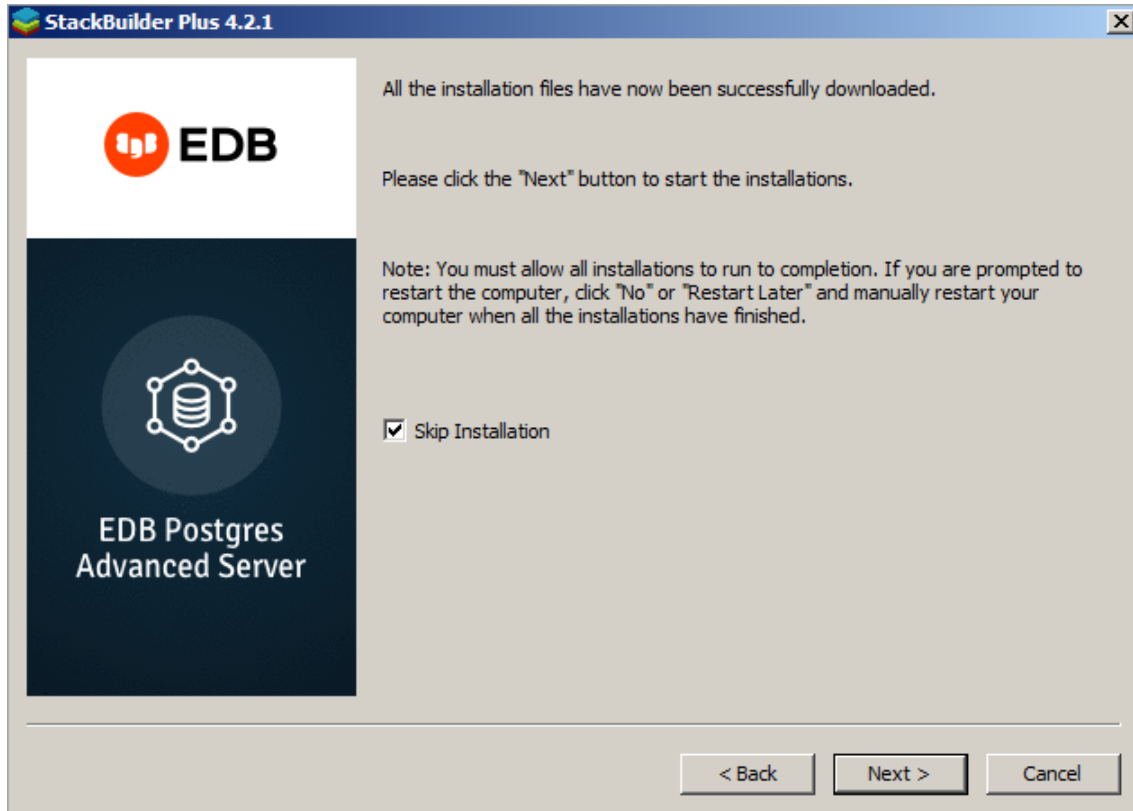


Fig. 5: Confirmation that the download process is complete

You can check the box next to `Skip Installation`, and select `Next` to exit StackBuilder Plus without installing the downloaded files, or leave the box unchecked and click `Next` to start the installation process.

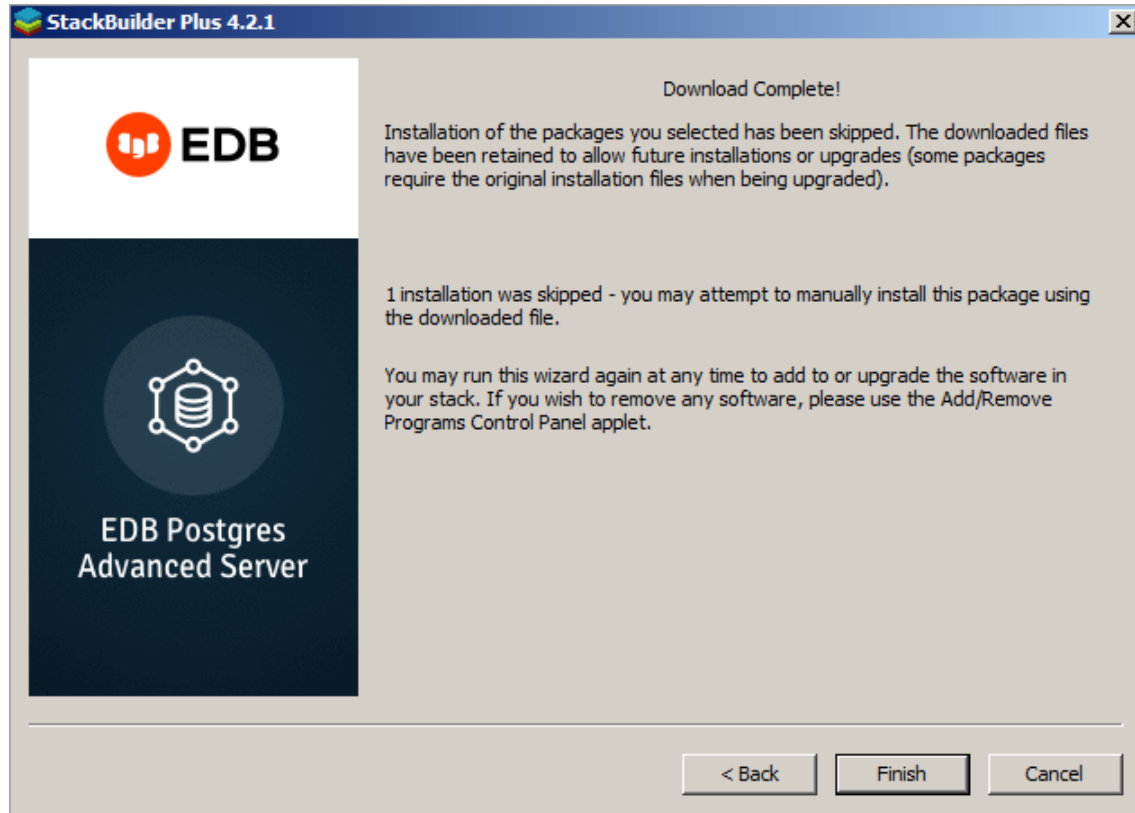


Fig. 6: *StackBuilder Plus confirms the completed installation*

When the upgrade is complete, StackBuilder Plus will alert you to the success or failure of the installation of the requested package. If you were prompted by an installer to restart your computer, reboot now.

Note: If the update fails to install, StackBuilder Plus will alert you to the installation error with a popup dialog and write a message to the log file at %TEMP%.

Migration to Version 13

A dump/restore using `pg_dumpall` or `pg_upgrade` or logical replication is required for migrating data from any previous release. See *Upgrading an Installation With `pg_upgrade`* for information on migrating to new major releases.

Version 13 contains a number of changes that may affect compatibility with previous releases. Listed is the following incompatibilities:

- Change `SIMILAR TO ... ESCAPE NULL` to return `NULL`.

This new behavior matches the SQL specification. Previously a null `ESCAPE` value was taken to mean using the default escape string (a backslash character). This also applies to `substring (text FROM pattern ESCAPE text)`. The previous behavior has been retained in old views by keeping the original function unchanged.

- Make `json[b]_to_tsvector()` fully check the spelling of its `string` option.
- Change the way non-default `effective_io_concurrency` values affect concurrency.

Previously, this value was adjusted before setting the number of concurrent requests. The value is now used directly. Conversion of old values to new ones can be done using:

```
SELECT round(sum(OLDVALUE / n::float)) AS newvalue FROM generate_
series(1, OLDVALUE) s(n);
```

- Prevent display of auxiliary processes in `pg_stat_ssl` and `pg_stat_gssapi` system views. Queries that join these views to `pg_stat_activity` and wish to see auxiliary processes will need to use left joins.
- Rename various `wait events` to improve consistency.
- Fix `ALTER FOREIGN TABLE ... RENAME COLUMN` to return a more appropriate command tag. Previously it returned `ALTER TABLE`; now it returns `ALTER FOREIGN TABLE`.

- Fix `ALTER MATERIALIZED VIEW ... RENAME COLUMN` to return a more appropriate command tag. Previously it returned `ALTER TABLE`; now it returns `ALTER MATERIALIZED VIEW`.
- Rename configuration parameter `wal_keep_segments` to `wal_keep_size`.

This determines how much WAL to retain for standby servers. It is specified in megabytes, rather than number of files as with the old parameter. If you previously used `wal_keep_segments`, the following formula will give you an approximately equivalent setting:

```
wal_keep_size = wal_keep_segments * wal_segment_size (typically 16MB)
```

- Remove support for defining operator classes using pre-PostgreSQL 8.0 syntax.
- Remove support for defining foreign key constraints using pre-PostgreSQL 7.3 syntax.
- Remove support for “opaque” pseudo-types used by pre-PostgreSQL 7.3 servers.
- Remove support for upgrading unpackaged (pre-9.1) extensions.

The `FROM` option of `CREATE EXTENSION` is no longer supported. Any installations still using unpackaged extensions should upgrade them to a packaged version before updating to PostgreSQL 13.

- Remove support for `posixrules` files in the timezone database.

IANA’s timezone group has deprecated this feature, meaning that it will gradually disappear from systems’ timezone databases over the next few years. Rather than have a behavioral change appear unexpectedly with a timezone data update, we have removed PostgreSQL’s support for this feature as of version 13. This affects only the behavior of POSIX-style time zone specifications that lack an explicit daylight savings transition rule; formerly the transition rule could be determined by installing a custom `posixrules` file, but now it is hard-wired. The recommended fix for any affected installations is to start using a geographical time zone name.

- In `lquery`, when an `lquery` pattern contains adjacent asterisks with braces, e.g., `*{2}.*{3}`, properly interpret that as `*{5}`.
- Fix `pageinspect`’s `bt_metap()` to return more appropriate data types that are less likely to overflow.
- The `SELECT DISTINCT ... ORDER BY` clause of the `SELECT DISTINCT` query behavior differs after upgrade.

If `SELECT DISTINCT` is specified or if a `SELECT` statement includes the `SELECT DISTINCT ... ORDER BY` clause then all the expressions in `ORDER BY` must be present in the select list of the `SELECT DISTINCT` query (applicable when upgrading from version 9.5 or 9.6 to any higher version of Advanced Server).

- All objects depending on collation must be rebuilt using `pg_upgrade` to migrate from earlier versions (12, 11, 10, 9.6, 9.5) using ICU to the latest Advanced Server version.

A change in collation definitions can lead to corrupt indexes and other problems because the database system relies on stored objects having a certain sort order. Generally, this should be avoided, but it can happen in legitimate circumstances, such as when using `pg_upgrade` to upgrade to server binaries linked with a newer version of ICU. When this happens, all objects depending on the collation should be rebuilt, for example, using `REINDEX`. When that is done, the collation version can be refreshed using the command `ALTER COLLATION ... REFRESH VERSION`. This will update the system

catalog to record the current collator version and will make the warning go away. Note that this does not actually check whether all affected objects have been rebuilt correctly.

EDB Postgres™ Advanced Server Upgrade Guide

Copyright © 2007 - 2020 EnterpriseDB Corporation.

All rights reserved.

EnterpriseDB® Corporation

34 Crosby Drive, Suite 201, Bedford, MA 01730, USA

T +1 781 357 3390 F +1 978 467 1307 E

info@enterprisedb.com

www.enterprisedb.com

- EnterpriseDB and Postgres Enterprise Manager are registered trademarks of EnterpriseDB Corporation. EDB and EDB Postgres are trademarks of EnterpriseDB Corporation. Oracle is a registered trademark of Oracle, Inc. Other trademarks may be trademarks of their respective owners.
- EDB designs, establishes coding best practices, reviews, and verifies input validation for the logon UI for EDB products where present. EDB follows the same approach for additional input components, however the nature of the product may require that it accepts freeform SQL, WMI or other strings to be entered and submitted by trusted users for which limited validation is possible. In such cases it is not possible to prevent users from entering incorrect or otherwise dangerous inputs.
- EDB reserves the right to add features to products that accept freeform SQL, WMI or other potentially dangerous inputs from authenticated, trusted users in the future, but will ensure all such features are designed and tested to ensure they provide the minimum possible risk, and where possible, require superuser or equivalent privileges.
- EDB does not warrant that we can or will anticipate all potential threats and therefore our process cannot fully guarantee that all potential vulnerabilities have been addressed or considered.

C

Command Line Options - Reference, [9](#)
Conclusion, [33](#)

I

Invoking pg_upgrade, [8](#)

L

Limitations, [3](#)
Linking versus Copying, [7](#)

M

Migration to Version 13, [30](#)

P

Performing a Minor Version Update
of an RPM Installation, [23](#)
Performing an Upgrade, [6](#)
pg_upgrade Troubleshooting, [21](#)

R

Reverting to the Old Cluster, [22](#)

S

Supported Platforms, [2](#)

U

Upgrade Error - Failed to load
library, [21](#)
Upgrade Error - fe_sendauth: no
password supplied, [21](#)
Upgrade Error - New cluster is not
empty
exiting, [21](#)

Upgrade Error - There seems to be
a postmaster servicing the
cluster, [21](#)
Upgrading a pgAgent Installation, [20](#)
Upgrading an Installation With
pg_upgrade, [4](#)
Upgrading to Advanced Server 13, [12](#)
Using StackBuilder Plus to Perform
a Minor Version Update, [24](#)